

Clipping Cross Section/Elevation Views

Reference Number: **KB-00066**

Last Modified: **June 20, 2024**

The information in this article applies to:



QUESTION

Can I limit what I see with a cross section or elevation camera?

ANSWER

In Chief Architect, cross section/elevation camera views can be clipped in various directions, allowing you to cut or remove the display of objects from the view, including entire floors. This is a great way to isolate a single room, a single floor level, or a specific area in the plan.

The ability to step a cutting plane is also helpful if you want to cut objects from the view, even if they're located on the same floor level.

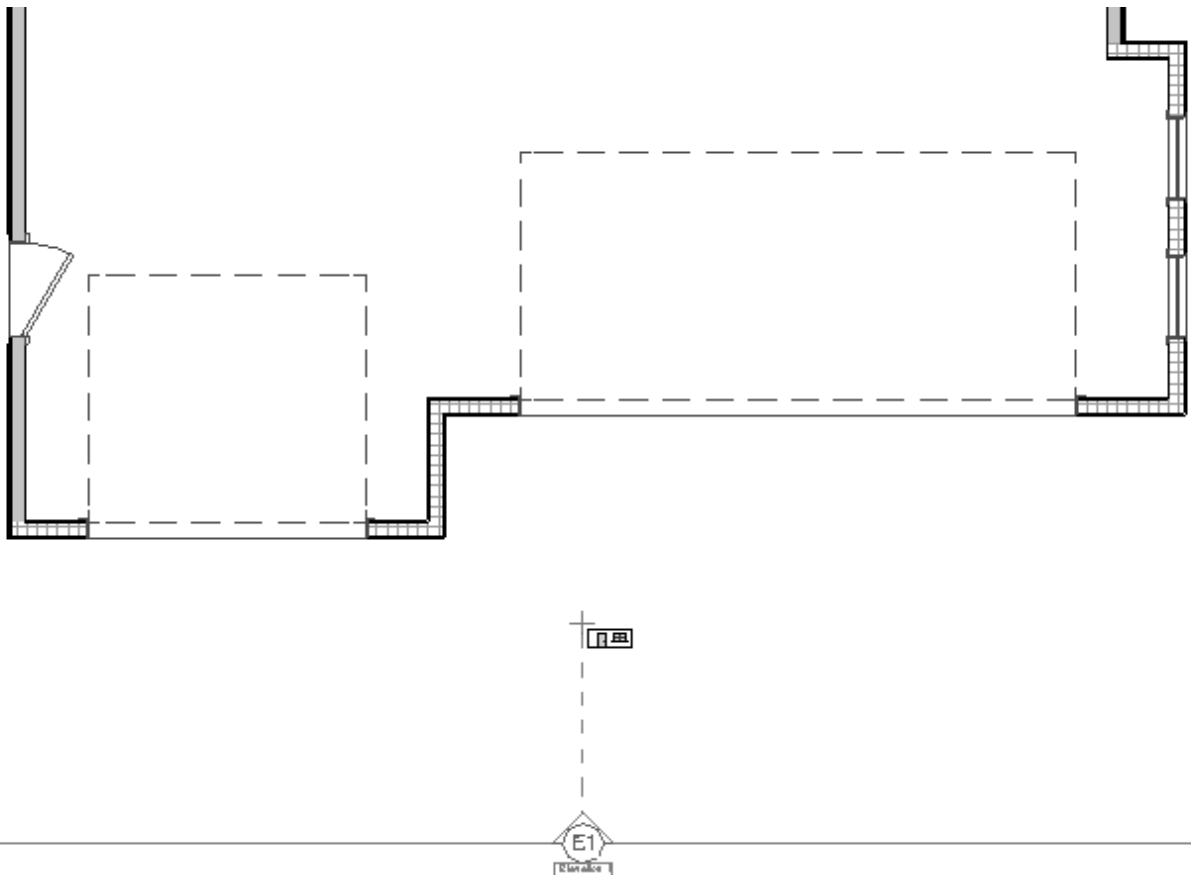
To clip a cross section/elevation view using the specification dialog


1. Navigate to **3D> Create Orthographic View** , then select the **Cross Section/Elevation** , **Backclipped Cross Section** , or **Wall Elevation**  tool.

Automatic elevation views can also be created. To create exterior elevations that will display content from all floors, navigate to 3D> Create Auto Elevations, then choose an appropriate option. To create interior elevations that will display content from a specific room on a specific floor level, select a room, then click on the Create Room Elevation Views edit tool.

2. With the tool selected, click and drag towards a wall to create a section/elevation view.

In this example, the Cross Section/Elevation tool was used to create an exterior elevation, as shown in the image below.

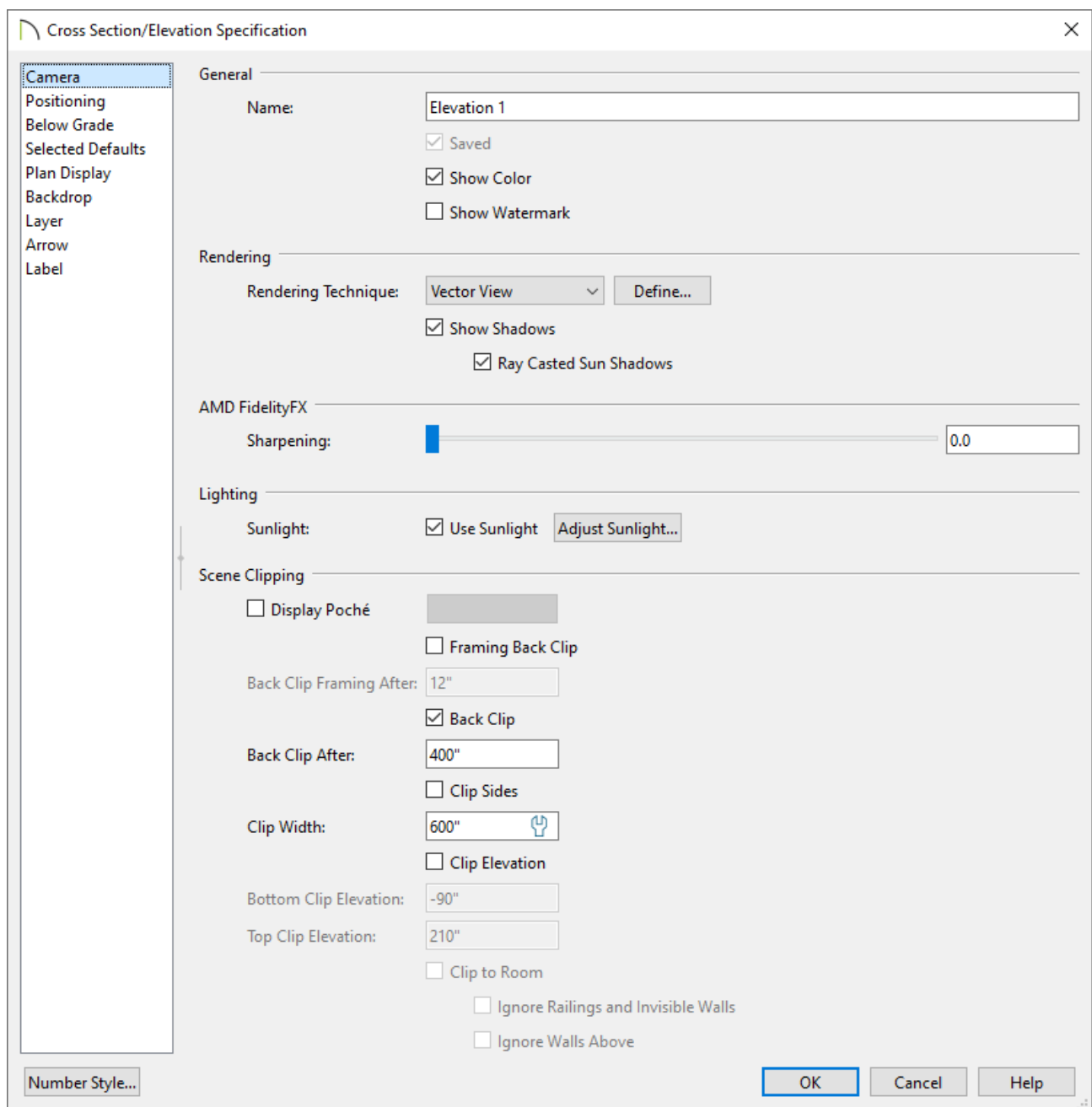


3. In the section/elevation view that generates, navigate to **Tools> Active View> Edit Active View** .

In Home Designer Pro, navigate to **3D> Edit Active Camera**  instead.



4. On the **CAMERA** panel of the **Specification** dialog that displays, focus on the settings located under the Scene Clipping section.



- Check **Display Poché*** to apply a dark fill to the clipped edges of walls, floor and ceiling platforms, and roof planes in the view.

**Applies to Chief Architect X16 and newer versions.*

- Check **Framing Back Clip*** to include only the framing objects or portions of framing objects located between the start and end points of the camera's Line of Sight in the view. When checked, you can specify the **Back Clip Framing After** distance, which is the distance from the camera's position beyond which framing objects are clipped.

**Applies to Chief Architect X15, Home Designer 2024, and newer versions.*

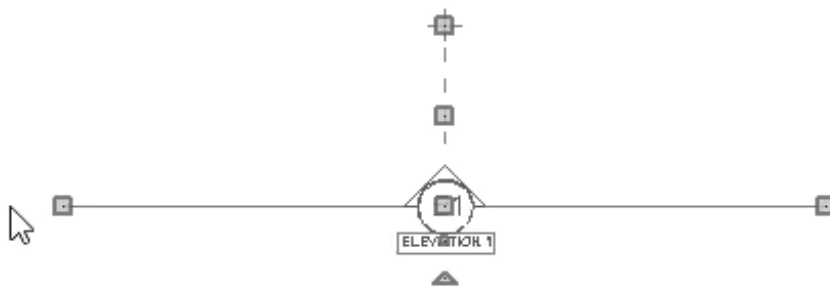
- Check **Back Clip** to include only the objects or portions of objects located

between the start and end points of the camera's Line of Sight in the view. When checked, you can specify the **Back Clip After** distance, which is the distance from the camera's position beyond which objects other than framing are clipped. It is also the length of the camera's Line of Sight from the cross section line at its start to the back clip line at its end. This text field reports the length of the camera's Line of Sight even when the setting is unchecked.

This box is checked by default for backclipped cross section views.

In this example, we have checked the Back Clip box and specified a Back Clip After value of 400".

- Check **Clip Sides** to limit the selected view's side-to-side extents. When checked, you can specify a **Clip Width** value and/or use the newly displayed edit handles at each end of the cross section line to adjust the view. When unchecked, the full width of the model is included in the view.



- Check the **Clip Elevation** box, then specify values for the **Bottom Clip Elevation** and **Top Clip Elevation** fields. When unchecked, the full height of the model is included in the view.

The display of the foundation floor level can also be controlled using layers. To learn more, please see the "Turning Off the Display of the Foundation in a Cross Section/Elevation View" resource located in the [Related Articles](#) section.

- A **Clip to Room** setting is also available. When checked, the extents of the current view will be confined to the room that the camera is located in and framing objects will not be visible. The view's clip values are reported above for reference, but will be grayed out. This box is checked by default for Wall Elevation views and is only available if the camera is located inside of a room.

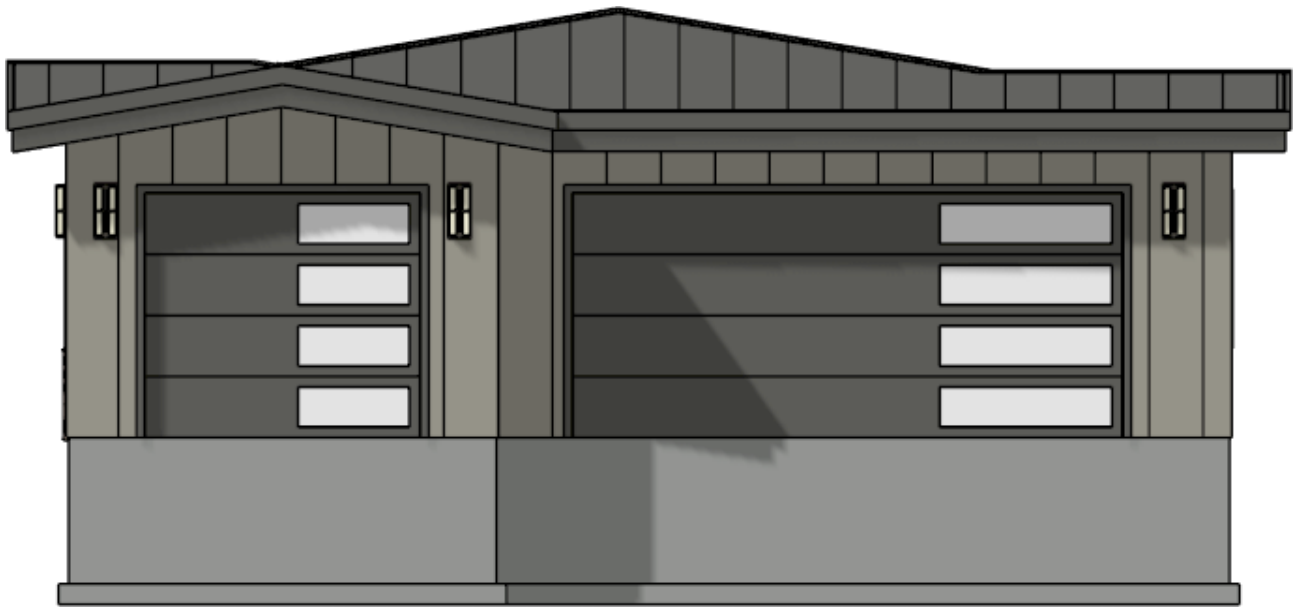
When this setting is checked or a Wall Elevation camera is being edited, some additional options are available:

- **Ignore Railings and Invisible Walls** will ignore the room definition created by these types of walls. When this is unchecked, only room definition created by regular walls is recognized.
- **Ignore Walls Above** will prevent any walls located above the selected camera's room from displaying in the view. This option typically has an effect only when the camera's room has Flat Ceiling Over This Room unchecked, or the room above has Floor Under This Room unchecked, in the Room Specification dialog.

5. Once all desired changes have been made, click **OK**.

Specifying a backclip line with an appropriate distance value allowed us to isolate the garage, as shown in the image below. If we wanted to remove the foundation from the view, we could have also checked the Clip Elevation box and raised the value of the Bottom Clip Elevation.

If you don't want to see clipping plane lines in a section or elevation view, access the Layer Display Options or Active Layer Display Options side window, locate the "CAD, Clip Lines" layer, then remove the check from either the Disp column or the Display checkbox.



To clip a cross section/elevation view using clipping plane lines*

*Applies to Chief Architect X13, Home Designer Pro 2022, and newer versions.

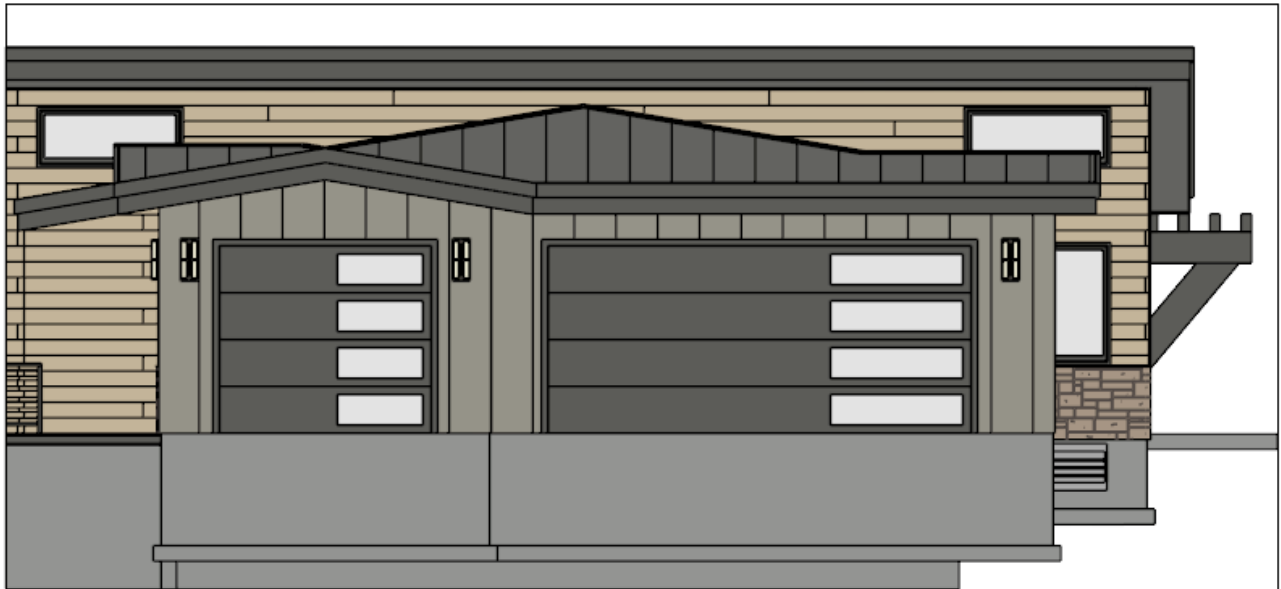
1. In a cross section/elevation view, navigate to **Tools> Active View> Edit Active View**




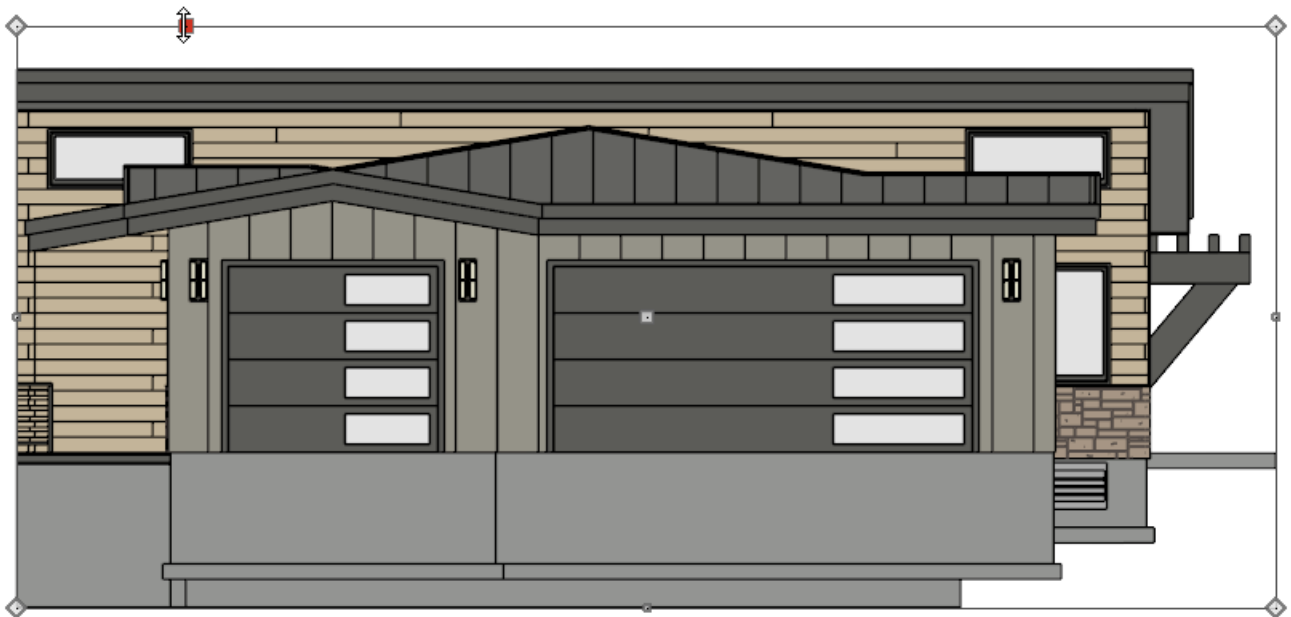
In Home Designer Pro, navigate to **3D> Edit Active Camera**  instead.

2. On the CAMERA panel of the **Specification** dialog that displays, check the **Clip Sides** and/or **Clip Elevation** box, then click **OK**.
3. In the cross section/elevation, clipping plane lines will be appear on the sides if Clip Sides was checked in the step above, or on the top and bottom if Clip Elevation was checked.



Note: If clipping plane lines don't appear, it's possible that the "CAD, Clip Lines" layer is not displayed in the active view, or that the clipping plane lines may be blending in with the components in the view. Turn on the display of the layer using the Layer Display Options dialog or Active Layer Display Options side window, or click along an edge of the elevation to select the clip line.



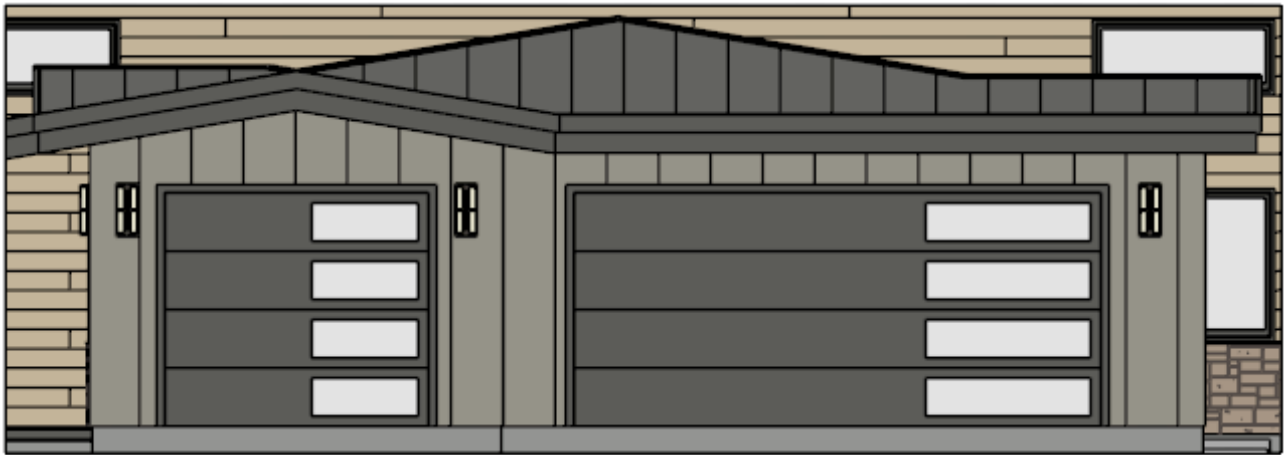
4. Using the **Select Objects**  tool, select a clip line and use the various edit handles that display to adjust its position.



5. If you don't want one of the clip lines to be a straight line/edge, you can use the various edit buttons that display on the Edit toolbar to modify the shape:


- Use the **Add Break**  tool to add a break point on a clip line.
- Use the **Change Line/Arc**  edit button to change a line to an arc.

- Repeat Steps 4 - 5 with the other clip lines until the view is clipped, or cropped, to your liking.

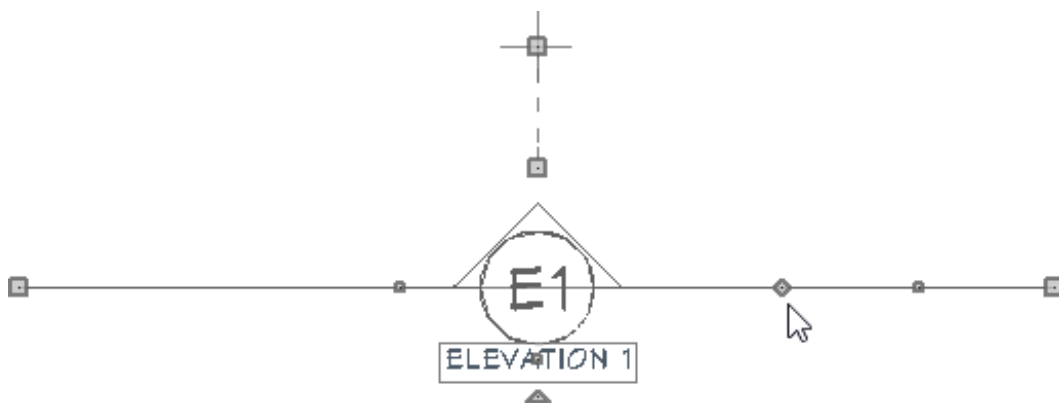


To create stepped cutting planes*

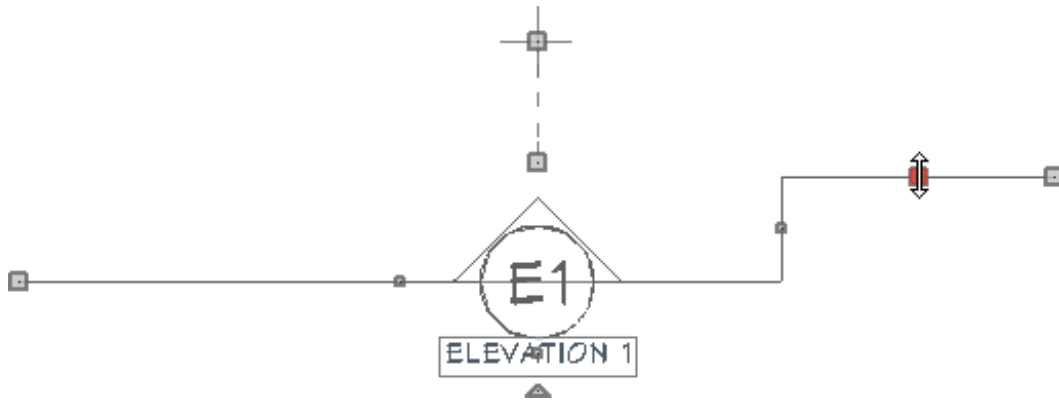
**Applies to Chief Architect Premier.*

- In a plan view, select the cross section/elevation view callout symbol.
- Click the **Add Break**  edit tool, then click on the front cutting plane of the selected camera to add a new diamond-shaped Resize edit handle at the point where you clicked.

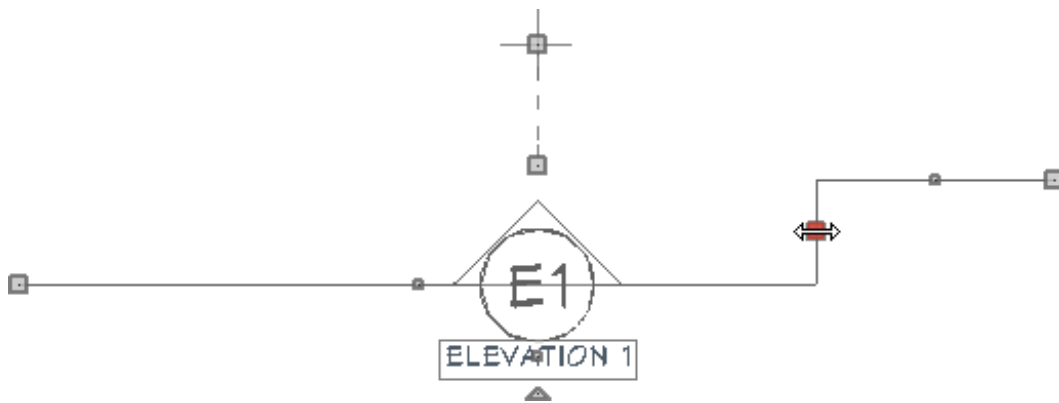
You will see a diamond handle where the break has been placed and a square edit handle between the break and the clip plane's end edit handle.



- Click and drag the edit handle on either side of the break perpendicular to the cutting plane to create a step.



4. Click and drag the edit handle associated with the break parallel to the cutting plane to adjust the position of the step.



Related Articles

- 📄 [Creating a Cabinet Detail \(/support/article/KB-00580/creating-a-cabinet-detail.html\)](/support/article/KB-00580/creating-a-cabinet-detail.html)
- 📄 [Turning Off the Display of the Foundation in a Cross Section/Elevation View \(/support/article/KB-00175/turning-off-the-display-of-the-foundation-in-a-cross-section-elevation-view.html\)](/support/article/KB-00175/turning-off-the-display-of-the-foundation-in-a-cross-section-elevation-view.html)



[\(https://chieftalk.chiefarchitect.com/\)](https://chieftalk.chiefarchitect.com/)

 [\(/blog/\)](/blog/)



[\(https://www.facebook.com/ChiefArchitect\)](https://www.facebook.com/ChiefArchitect)



[\(https://www.youtube.com/user/ChiefArchitectInc\)](https://www.youtube.com/user/ChiefArchitectInc)



[\(https://www.instagram.com/chiefarchitect/\)](https://www.instagram.com/chiefarchitect/)



[\(https://www.houzz.com/pro/chiefarchitect/\)](https://www.houzz.com/pro/chiefarchitect/)



[\(https://www.pinterest.com/chiefarchitect/\)](https://www.pinterest.com/chiefarchitect/)

[208-292-3400 \(tel:+1-208-292-3400\)](tel:+1-208-292-3400)

© 2000–2024 Chief Architect, Inc.

[Terms of Use \(/company/terms.html\)](/company/terms.html)

[Privacy Policy \(/company/privacy.html\)](/company/privacy.html)