

Creating a Plan Database

Reference Number: **KB-00740**

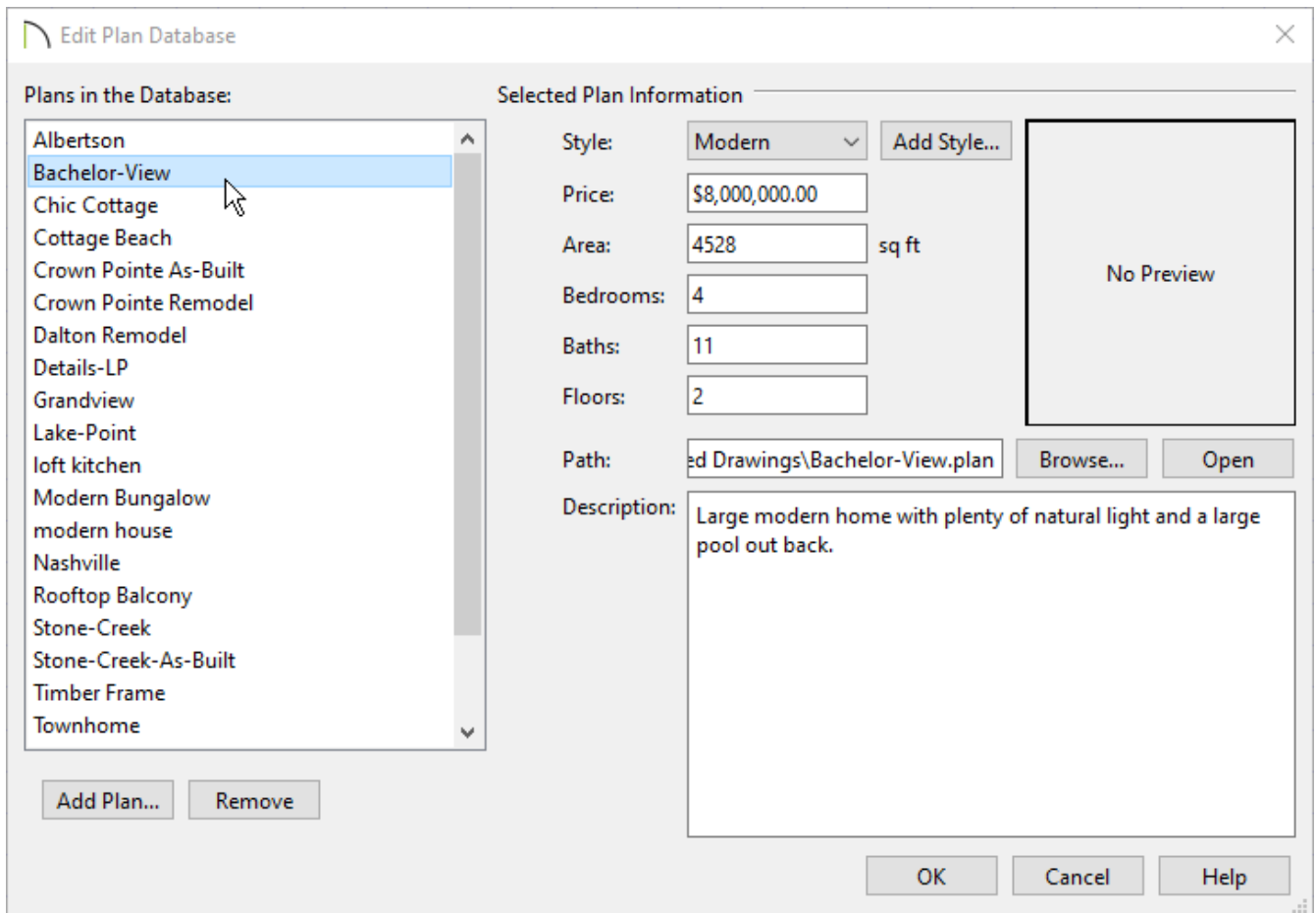
Last Modified: **January 5, 2023**

The information in this article applies to:



QUESTION

How can I use the Plan Database tool in Chief Architect?



ANSWER

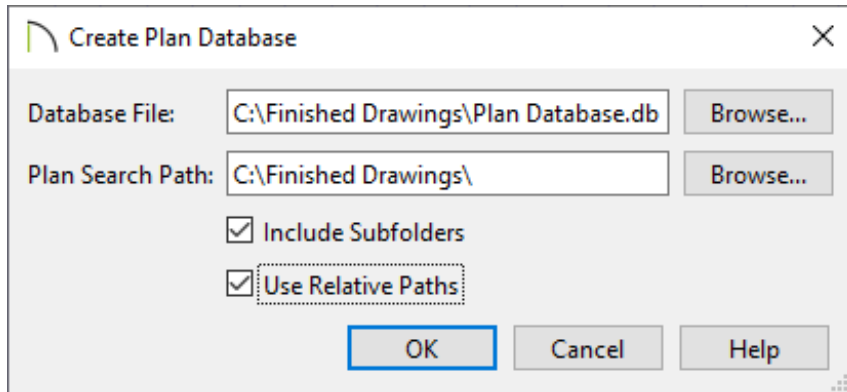
A Plan Database is a special list that stores information such as the type of construction, number of rooms, and price of each plan in the database. Once a database is created, you can use the Find Plan Assistant to search for plans that meet the construction, size, and price criteria that you specify.

Creating a Plan Database involves several steps:

- Creating a plan database file
- Adding and deleting plans from the database
- Assigning a price to each plan
- Creating styles to organize the database
- Creating and using custom thumbnail images for the plans in your database
- Searching for plans in the database


To create a plan database

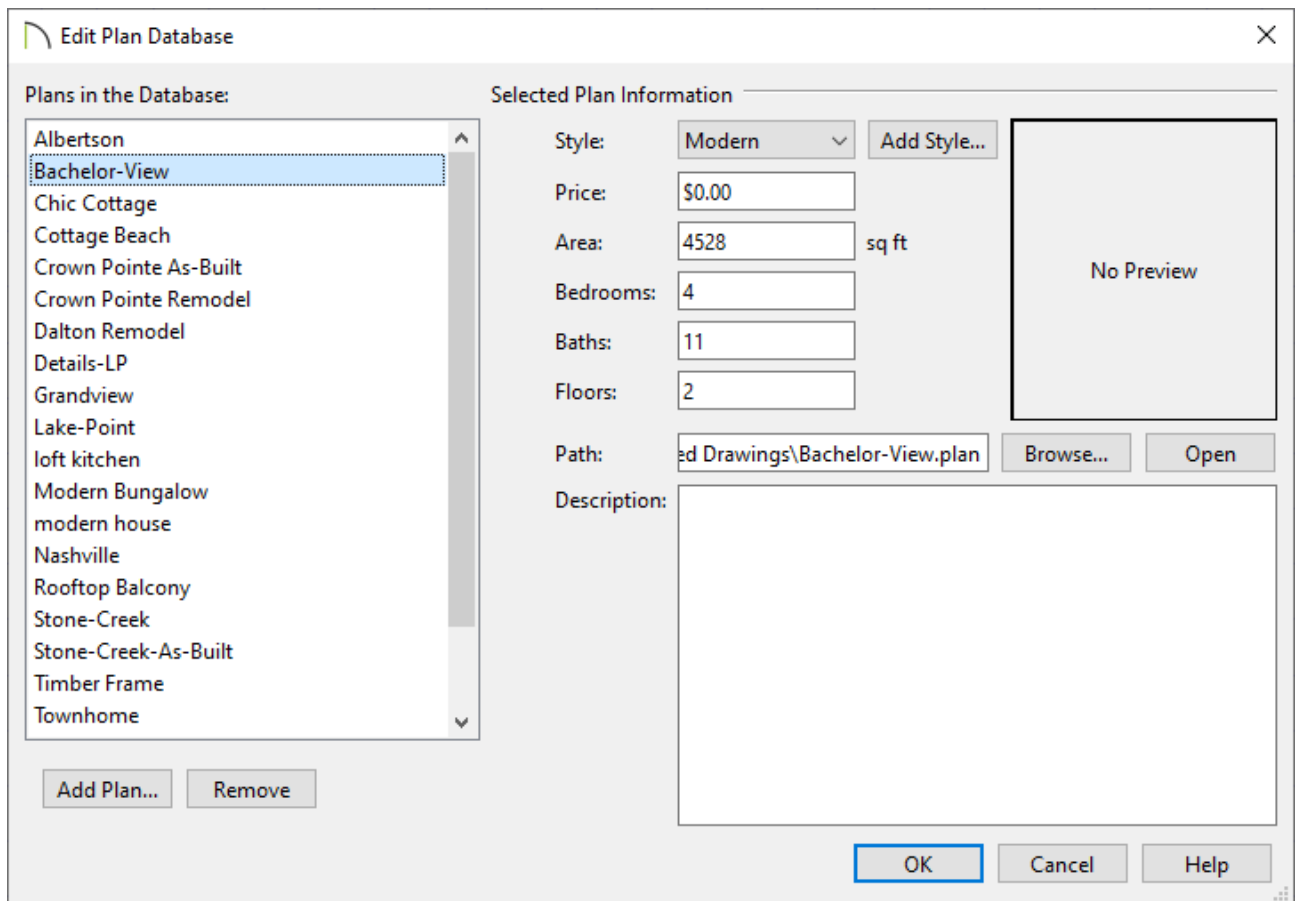
1. Select **Tools> Plan Database> Create Plan Database**  from the menu to open the **Create Plan Database** dialog.



2. Click the **Browse** button to specify the database file's name and the location where this database will be saved. Generally you will want to save this in the same folder as your plan files.
3. Next, specify the folder that will contain the plans in your database by clicking the **Browse** button next to the Plan Search Path field, finding and selecting the folder that contains your plan files, and choosing select folder.
 - Check the box beside **Include Subfolders** if you want your plan database to include plans located in subfolders of the Plan Search Path folder.
 - If you want to distribute your plan database to clients or colleagues, check the box beside **Use Relative Paths**. This allows the plan database to be copied to other computers along with the plans.

To add or delete plans from the plan database

1. Select **Tools> Plans Database> Edit Plan Database**  from the menu.
2. In the **Edit Plan Database** dialog, browse to the plan database you want to edit and open it.



3. In the **Edit Plan Database** dialog:

Click the **Add Plan** button to add a new plan to the database.

Click the **Remove** button to remove the selected plan from the database.

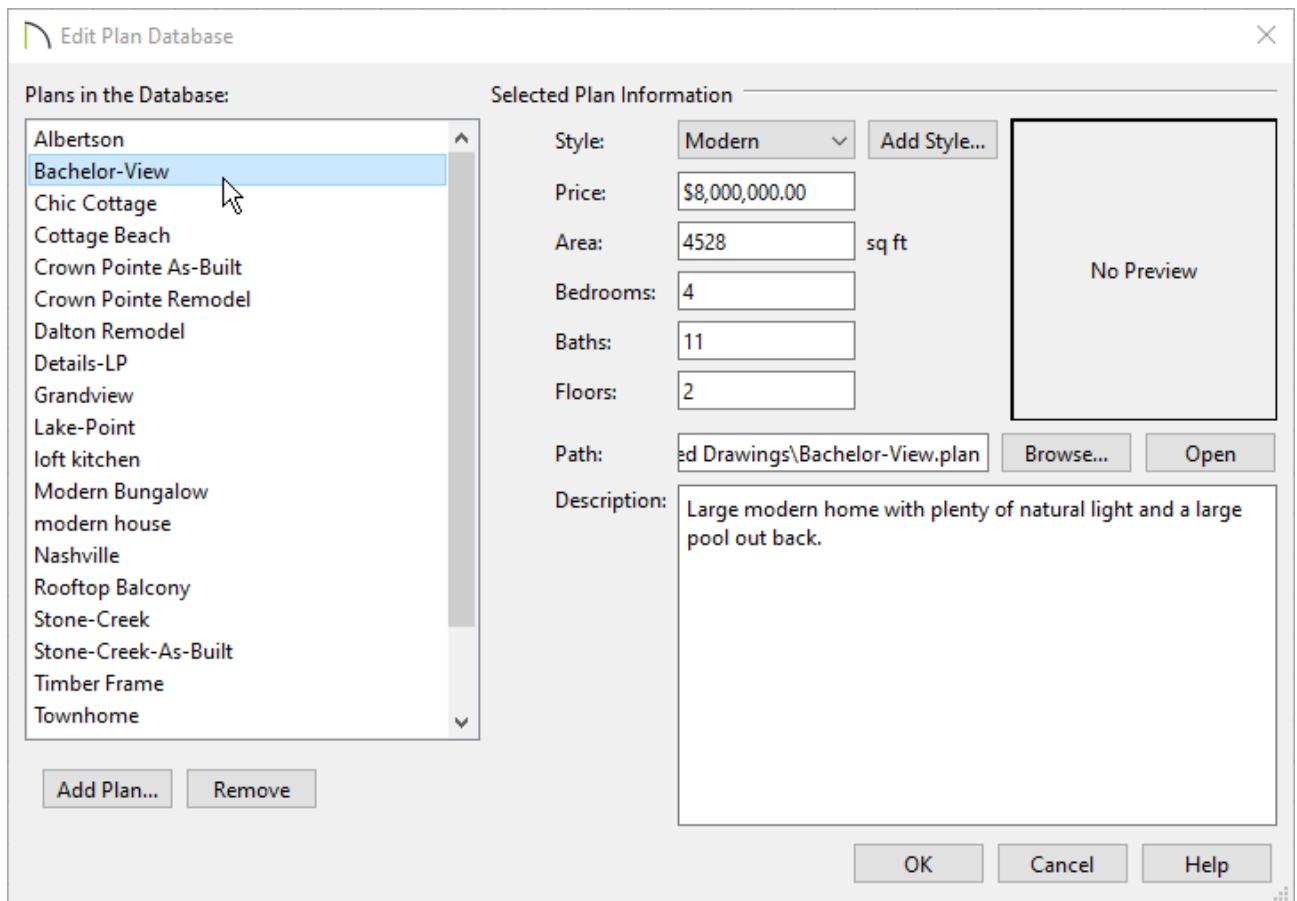
Click the **Browse** button to change the link of the selected plan to a new location.

Click the **Open Plan** button to open the selected plan in Chief Architect.

To add pricing information to each plan

1. Select **Tools > Plans Database > Edit Plan Database**  from the menu.

2. In the **Edit Plan Database** dialog, browse to the plan database you want to edit and open it.



3. In the **Edit Plan Database** dialog, click on a plan to select it and then:

Specify a **Price** for the model. This could be the price to purchase the plan, an estimate of the construction costs or any other price information you might want to convey.

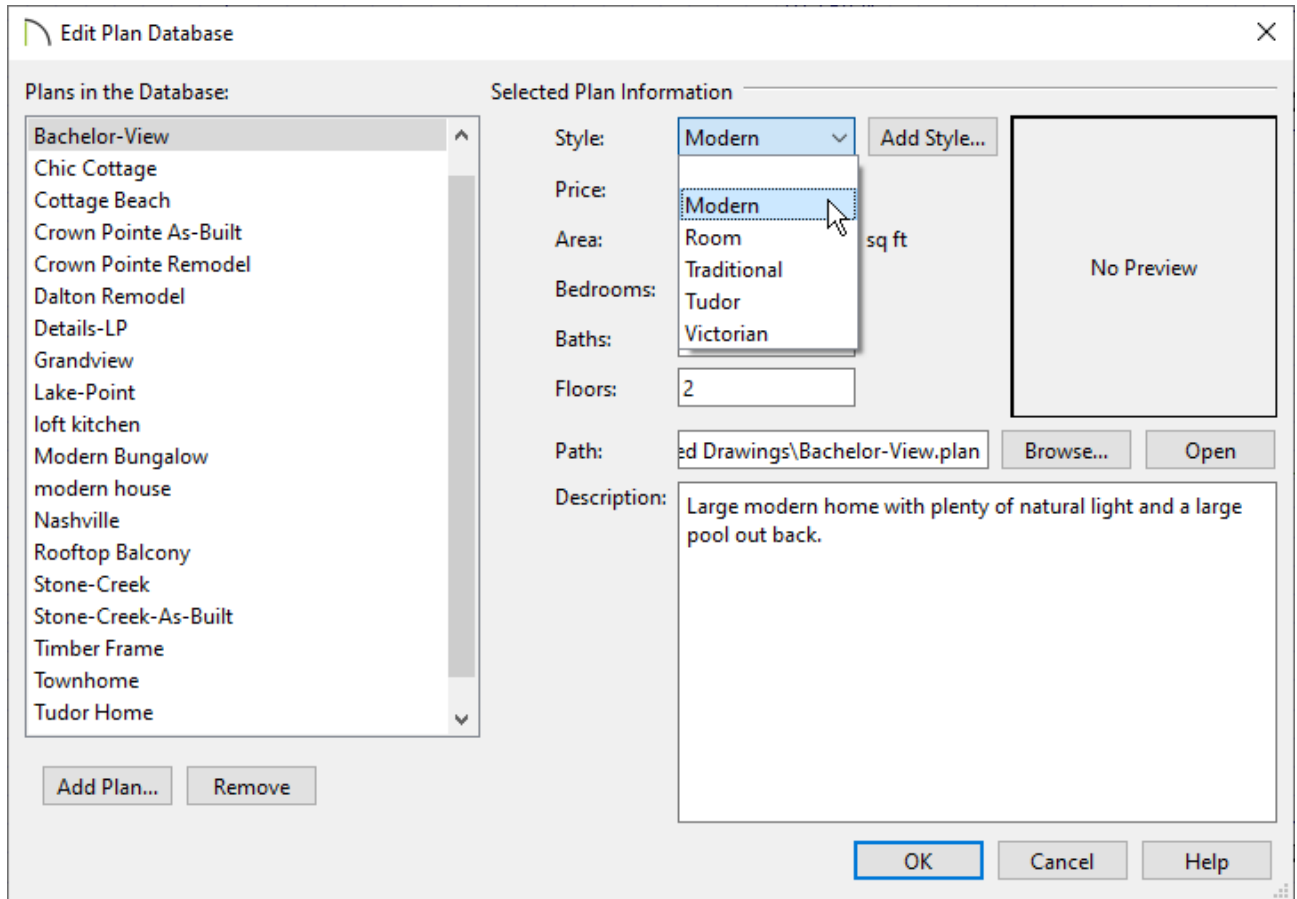
Enter a **Description** of the plan. You may want to indicate what is purchased for the price indicated above.

The **Area**, number of **Bedrooms**, **Baths** and **Floors** are added automatically based on the Living Area, number of floors, and Room Type specifications saved in the plan file. Each of these values can be adjusted as needed in the plan database.

To organize plans by style




1. From the menu, select **Tools > Plans Database > Edit Plan Database** .

2. In the **Select Plan Database** dialog, browse to the plan database you want to edit and open it.





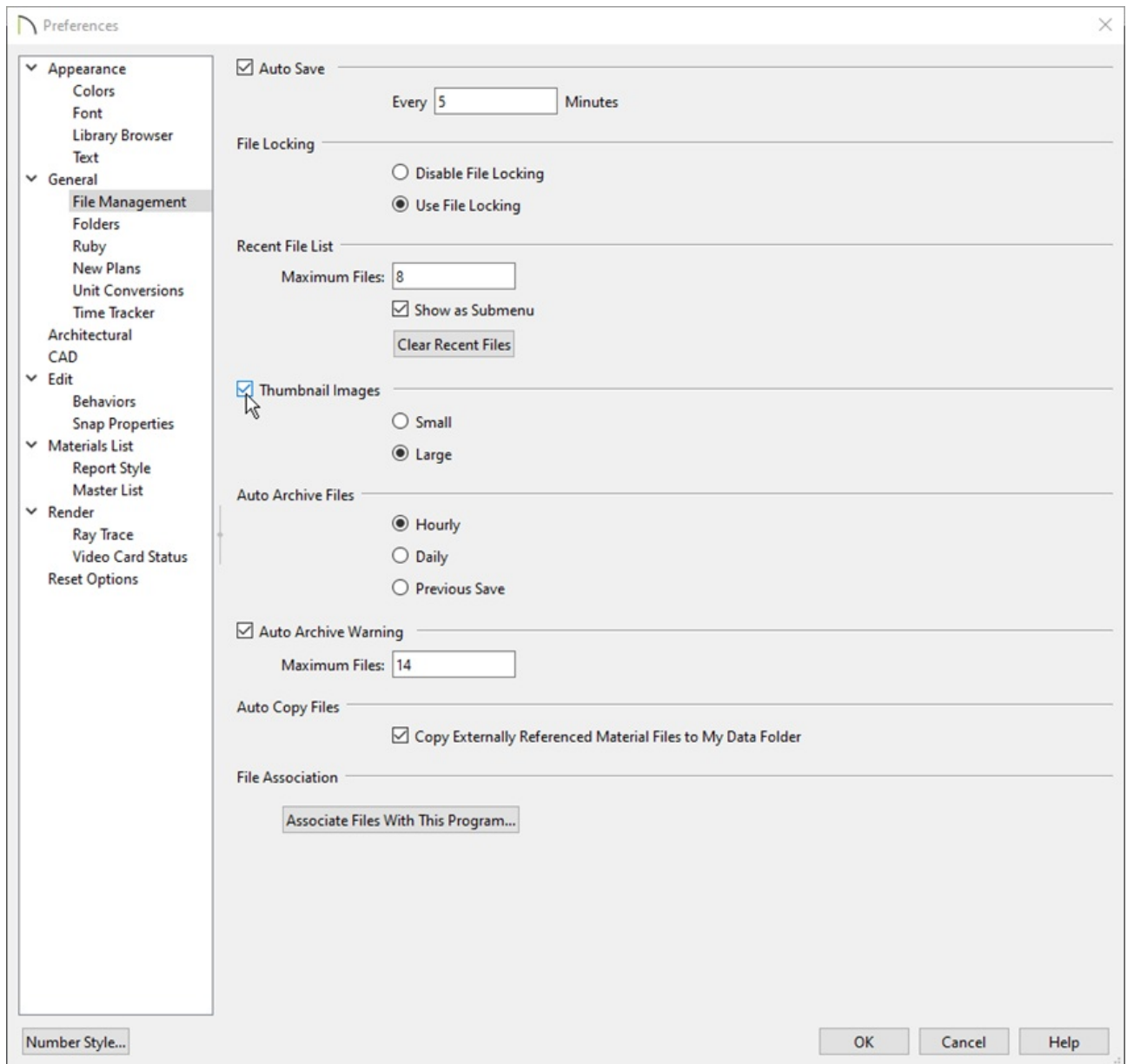
3. In the **Edit Plan Database** dialog you can create a new style by selecting **Add Style**, and then apply your style by selecting a plan and selecting a style from the drop-down.

To create and display custom thumbnail images



1. **Open**  the plan you wish to create a custom thumbnail image for.
2. Create the view that you want to use for the plan thumbnail, which can be a floor plan, **Perspective** , or **Orthographic**  view.

For a consistent presentation, consider using the same view for every plan thumbnail in your database. For example, you might always use a Full Overview or a Front Elevation View.

- When the desired thumbnail view is active, select **File> Save Thumbnail Image**  from the menu.
- To display thumbnail images you will need to enable the setting in your preferences. Select **Edit> Preferences**  from the menu on PC or **Chief Architect> Preferences** on Mac to open the **Preferences** dialog.
- Under the **FILE MANAGEMENT** panel, look for **Thumbnail Images**:

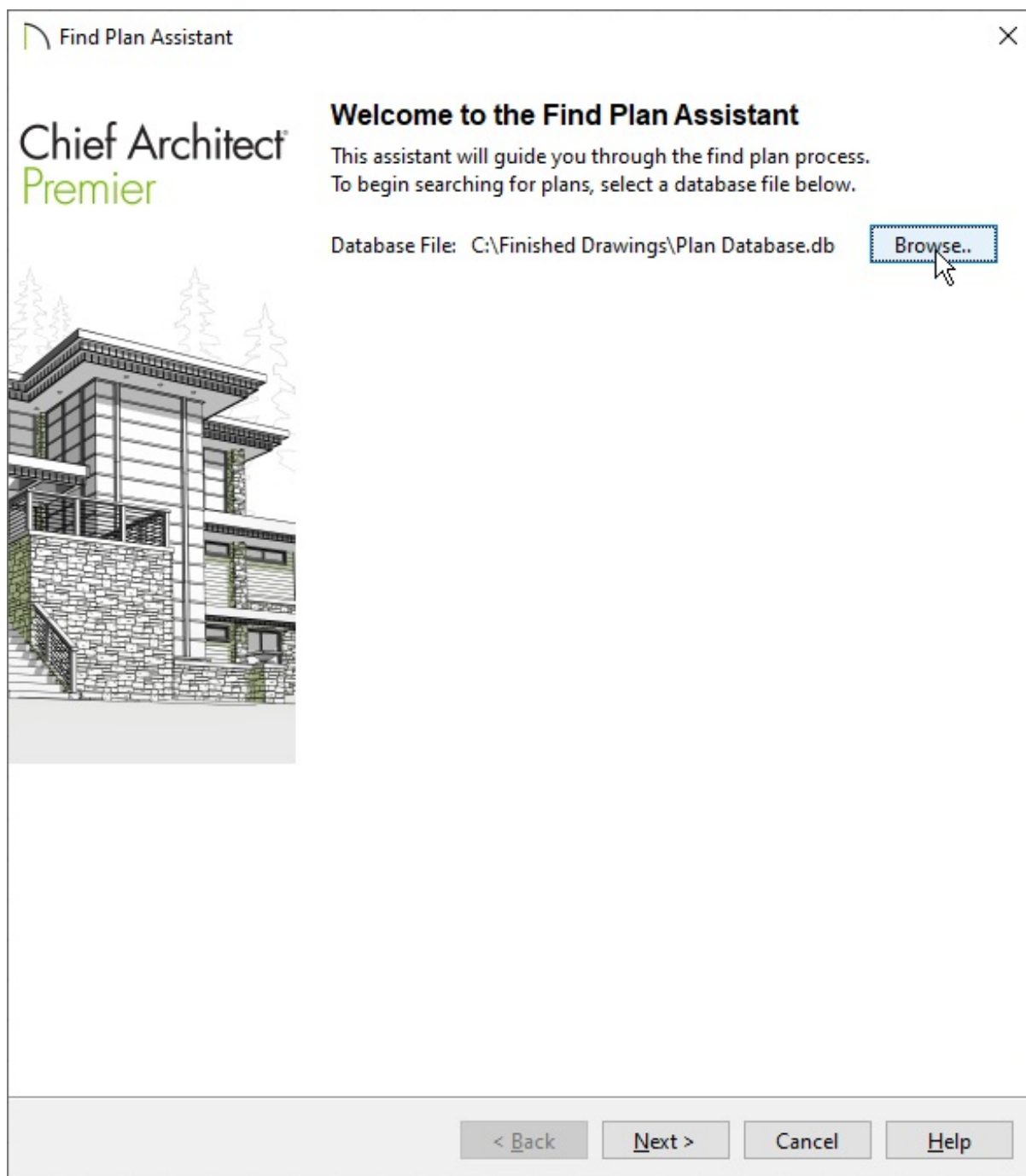


- Place a check mark next to **Thumbnail Images** to enable this option.

- Select **Large** or **Small** images. Selecting **Large** typically results in better quality images.
6. The next time you open the plan by selecting **File> Open Plan**  from the menu or use the **Find Plan Assistant**  to search the plan, this plan thumbnail will display as a preview image.

To search for plans using your plan database



1. Open a new or existing plan and select **Tools> Plans Database> Search For Plans**  from the menu.



2. On the Welcome page of the **Find Plan Assistant**, click **Browse**, navigate to the Plan Database File, select it and choose Open to search that plan database.
3. Click **Next** to go to the House Style page and specify the style of home, the amount of floors, the amount of bedrooms you would like to search for, and click **Next**.
4. Go to the House Size page where you can specify the amount of bathrooms, the sq. ft, the price range of projects you would like to search for, and click **Next**.

5. Go to the Plan Details page and browse the collection of plans that match the specified criteria.
6. Select the plan you would like to open, click **Next**, and click **Finish** to open the specified plan file.

Related Articles

-  [Using the Backup Entire Plan/Project Tool to Send Files to Another User \(/support/article/KB-00987/using-the-backup-entire-plan-project-tool-to-send-files-to-another-user.html\)](/support/article/KB-00987/using-the-backup-entire-plan-project-tool-to-send-files-to-another-user.html)
-  [Viewing, Managing, and Sharing 3D Viewer Models \(/support/article/KB-03068/viewing-managing-and-sharing-3d-viewer-models.html\)](/support/article/KB-03068/viewing-managing-and-sharing-3d-viewer-models.html)



[\(https://chieftalk.chiefarchitect.com/\)](https://chieftalk.chiefarchitect.com/)

 [\(/blog/\)](/blog/)



[\(/https://www.facebook.com/ChiefArchitect\)](https://www.facebook.com/ChiefArchitect)



[\(/https://www.youtube.com/user/ChiefArchitectInc\)](https://www.youtube.com/user/ChiefArchitectInc)



[\(/https://www.instagram.com/chiefarchitect/\)](https://www.instagram.com/chiefarchitect/)



[\(/https://www.houzz.com/pro/chiefarchitect/\)](https://www.houzz.com/pro/chiefarchitect/)



[\(/https://www.pinterest.com/chiefarchitect/\)](https://www.pinterest.com/chiefarchitect/)