

Determining If Your Computer is 32-Bit or 64-Bit

Reference Number: **KB-01230**

Last Modified: **June 7, 2024**

The information in this article applies to:



QUESTION


How do I determine if I have a 32-bit or 64-bit system?

ANSWER

In this article, we will explain how to determine if your system is a 32-bit or 64-bit system. Please select the applicable option below to learn more:

- [Apple macOS](#)
- [Microsoft Windows](#)

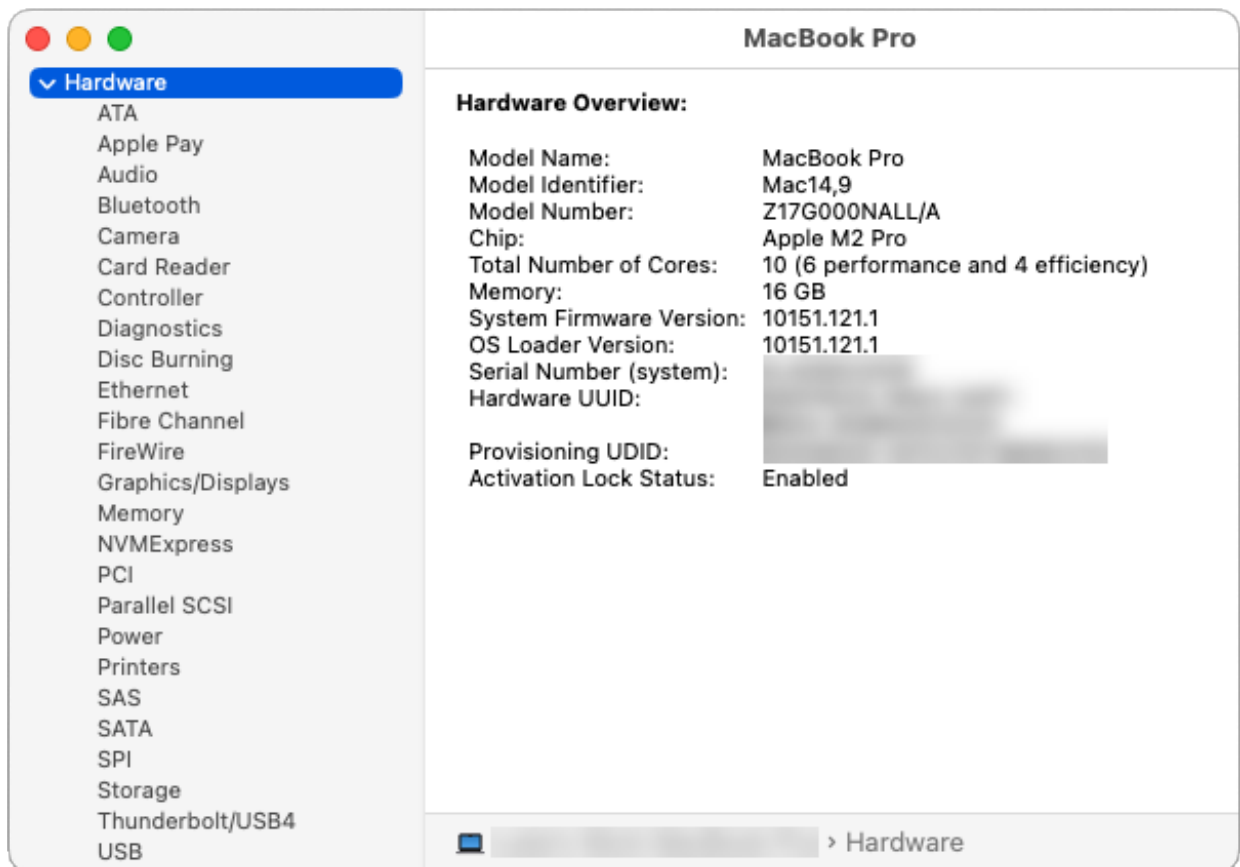
To determine the system type for macOS

1. Open the **Apple**  menu and select **About This Mac**.

2. Click the **System Report** button. If you do not see this button, click **More Info**, then scroll down and click the **System Report** button.
3. On the **HARDWARE** panel, under the Hardware Overview heading, focus on the line item(s) directly below the Model Identifier.
 - If you're using a Mac with an Intel-based processor, take note of the **Processor Name** line item, then proceed to Step 4.




- If you're using a Mac with an Apple silicon chip (e.g. M1, M2, etc.), you will see **Model Number** and **Chip** line items. All Apple silicon chips use 64-bit architecture.

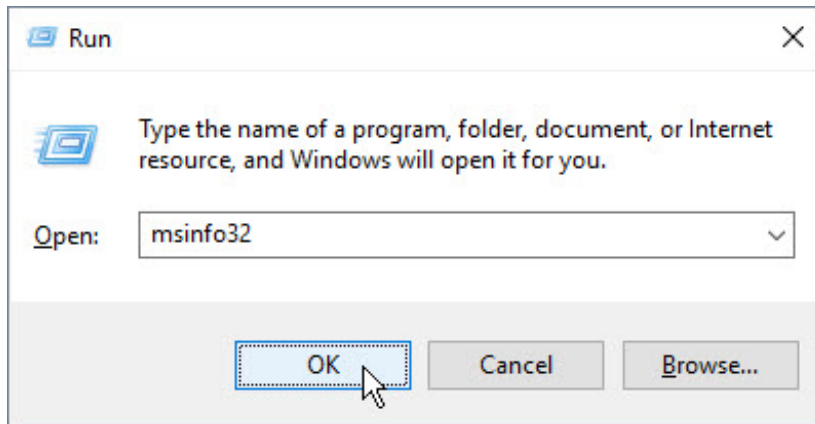


4. If you're using a Mac with an Intel-based processor, you can use the chart below to identify your system type.

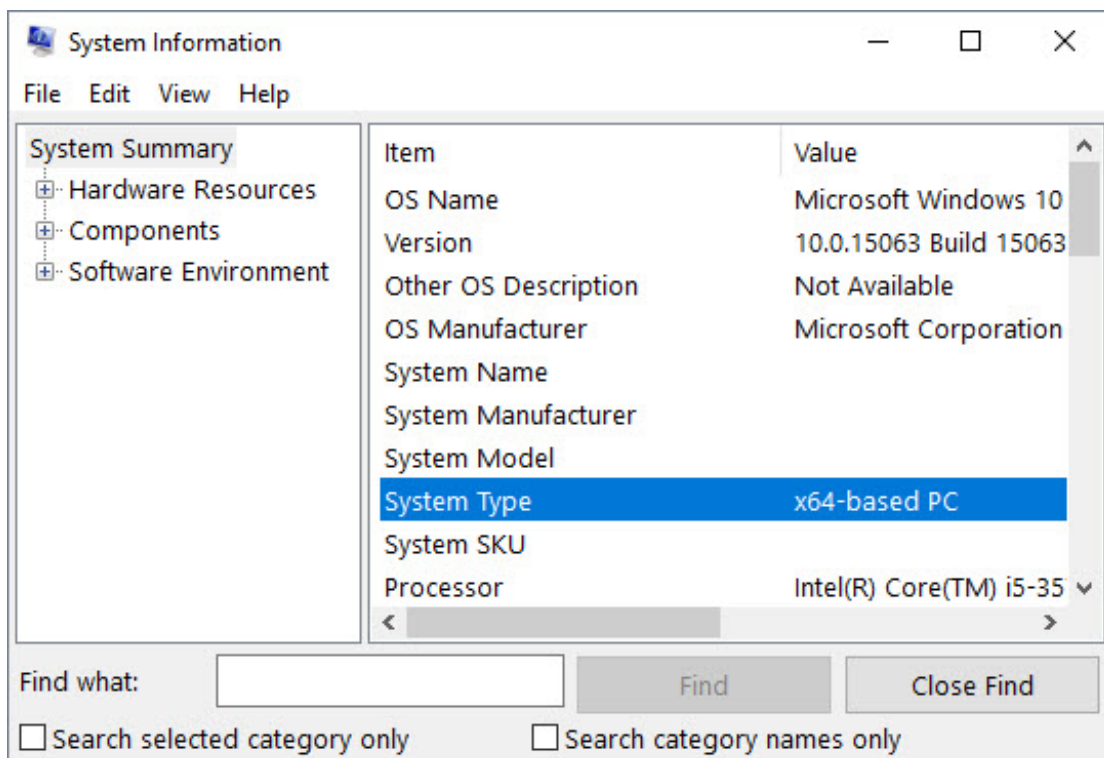
Processor Name	32- or 64-bit
Intel Core Solo	32 bit
Intel Core Duo	32 bit
Intel Core 2 Duo	64 bit
Intel Quad-Core Xeon	64 bit
Dual-Core Intel Xeon	64 bit
Quad-Core Intel Xeon	64 bit
Core i3	64 bit
Core i5	64 bit
Core i7	64 bit
Core i9	64 bit

To determine the system type for Windows

1. On the keyboard, hold down the **Windows Key** , then press the letter **R**.
2. In the **Run** dialog that displays, type in `msinfo32` and click **OK**.




3. On the **SYSTEM SUMMARY** panel of the **System Information** dialog that displays, locate the **System Type** line item.





- An **x64-based PC** Value is a system that uses 64-bit architecture.


- An **x86-based PC** Value is a system that uses 32-bit architecture.

Related Articles

 [Chief Architect Minimum System Requirements \(/support/article/KB-02761/chief-architect-minimum-system-requirements.html\)](/support/article/KB-02761/chief-architect-minimum-system-requirements.html)

 [Locating Your Computer's Specifications \(/support/article/KB-03129/locating-your-computer-s-specifications.html\)](/support/article/KB-03129/locating-your-computer-s-specifications.html)

 [Mac Models Compatible with Chief Architect X16 and Home Designer 2025 \(/support/article/KB-03167/mac-models-compatible-with-chief-architect-x16-and-home-designer-2025.html\)](/support/article/KB-03167/mac-models-compatible-with-chief-architect-x16-and-home-designer-2025.html)

 [Retrieving System Information to Send to Technical Support \(/support/article/KB-01867/retrieving-system-information-to-send-to-technical-support.html\)](/support/article/KB-01867/retrieving-system-information-to-send-to-technical-support.html)



[\(https://chieftalk.chiefarchitect.com/\)](https://chieftalk.chiefarchitect.com/)

 [\(/blog/\)](/blog/)



[\(/https://www.facebook.com/ChiefArchitect\)](https://www.facebook.com/ChiefArchitect)



[\(/https://www.youtube.com/user/ChiefArchitectInc\)](https://www.youtube.com/user/ChiefArchitectInc)



[\(/https://www.instagram.com/chiefarchitect/\)](https://www.instagram.com/chiefarchitect/)



[\(/https://www.houzz.com/pro/chiefarchitect/\)](https://www.houzz.com/pro/chiefarchitect/)



[\(/https://www.pinterest.com/chiefarchitect/\)](https://www.pinterest.com/chiefarchitect/)