

Duplicating a Floor Plan on Another Level

Reference Number: **KB-00012**

Last Modified: **July 15, 2021**

The information in this article applies to:



QUESTION


I designed a floor plan, complete with fixtures, that must be duplicated on multiple levels of my project. What is the best way to do this?

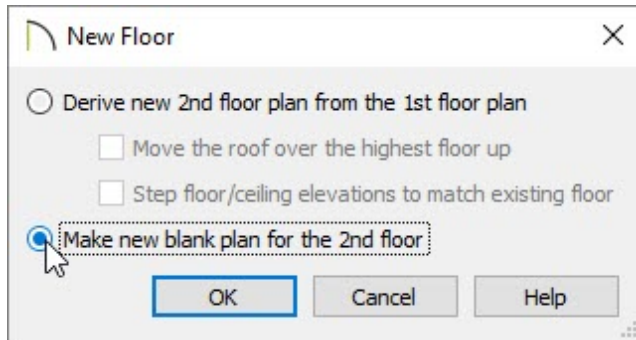
ANSWER



In some situations, such as apartments, condominiums, or hotels, the floor plans on multiple floors will be nearly identical. While the Derive new floor plan from the 1st floor plan option will copy the layout of exterior walls, other objects like doors, windows, cabinets and fixtures, will not be duplicated.

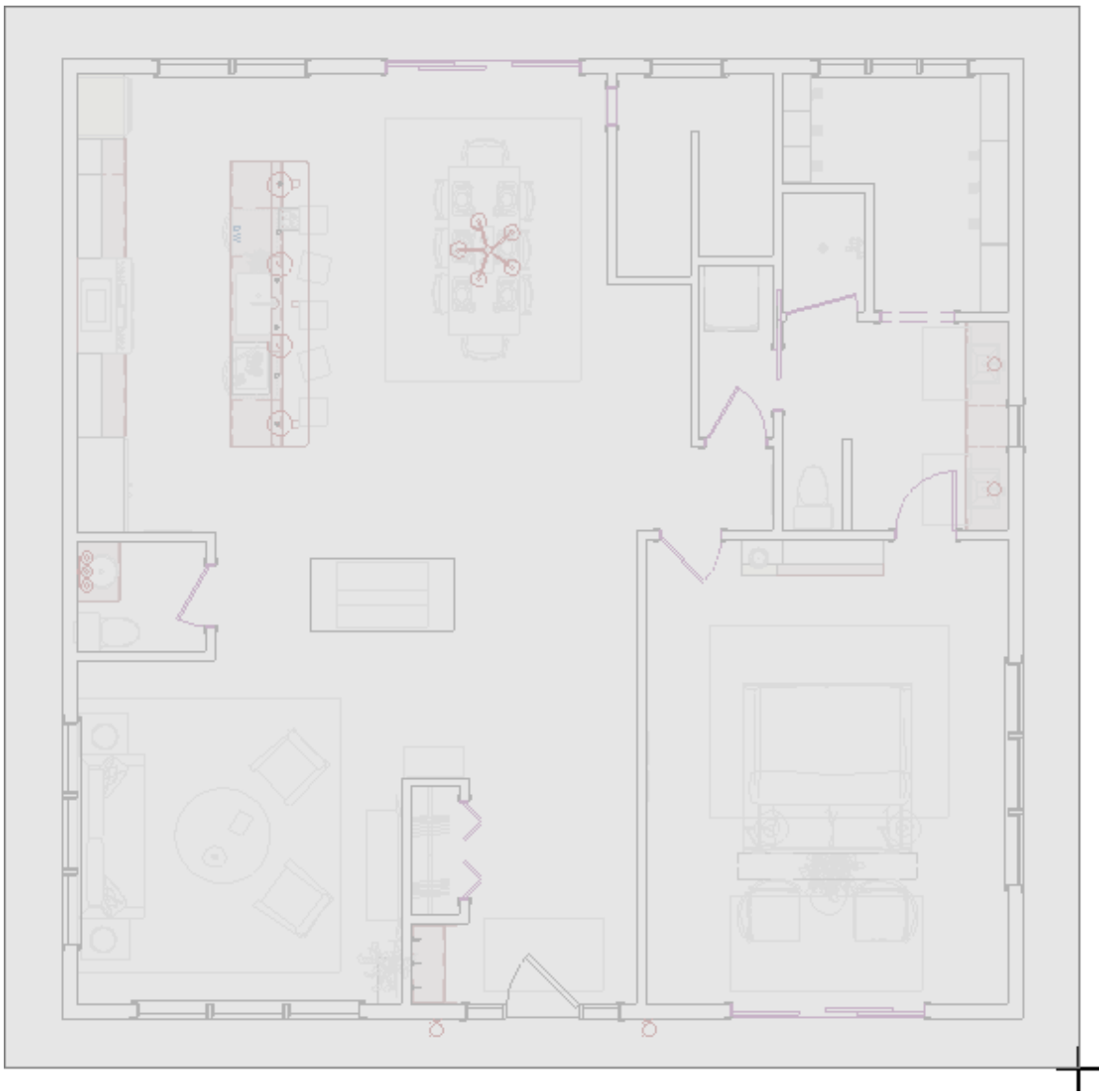
It is possible, however, to duplicate all objects on a floor using the Edit Area tool.

To copy a floor plan to another level

1. Create a new floor by selecting **Build> Floor> Build New Floor**  from the menu.
2. In the **New Floor** dialog, select **Make new blank plan for the 2nd floor**, then click **OK**.



3. In the **Floor Defaults** dialog that displays next, specify your desired floor and ceiling settings, then click **OK** to create a new blank floor level.
4. Select **Tools> Floor/Reference Display> Down One Floor**  to move back down to Floor 1.
5. Select **Edit> Edit Area> Edit Area** , and draw an edit area polyline around the entire structure on this floor.



6. Select **Edit> Copy** .

7. Select **Tools> Floors/Reference Display> Up One Floor**  to move up to the next floor.

8. Select **Edit> Paste> Paste Hold Position**  to paste the copied area directly above the original.

Note: You may receive a message stating "The default floor/ceiling elevation of the new room(s) is different from the default floor/ceiling elevation of the old room (s)." Click OK to proceed.

Both floors should now look identical.

Related Articles

[📄 Using the Reflect About Object Tool \(/support/article/KB-00284/using-the-reflect-about-object-tool.html\)](/support/article/KB-00284/using-the-reflect-about-object-tool.html)



[\(https://chieftalk.chiefarchitect.com/\)](https://chieftalk.chiefarchitect.com/)

 [\(/blog/\)](/blog/)



[\(/https://www.facebook.com/ChiefArchitect\)](https://www.facebook.com/ChiefArchitect)



[\(/https://www.youtube.com/user/ChiefArchitectInc\)](https://www.youtube.com/user/ChiefArchitectInc)



[\(/https://www.instagram.com/chiefarchitectsoftware/\)](https://www.instagram.com/chiefarchitectsoftware/)



[\(/https://www.houzz.com/pro/chiefarchitect/\)](https://www.houzz.com/pro/chiefarchitect/)



[\(/https://www.pinterest.com/chiefarchitect/\)](https://www.pinterest.com/chiefarchitect/)