

Message: Could not successfully open all of this layout's associated files.

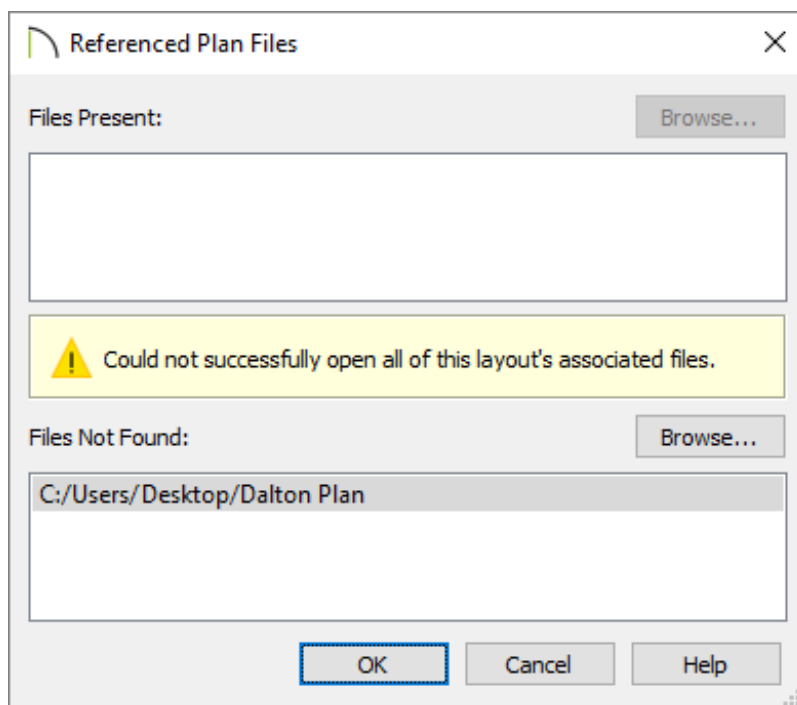
Reference Number: **KB-00022**

Last Modified: **June 21, 2024**

This article also applies to the following legacy products:
Pro

QUESTION

When I open a layout file, a Referenced Plan Files dialog opens displaying a list of files present in the layout along with files not found in the layout. This window has the plan file listed in the second section and the views do not display. Why is that?



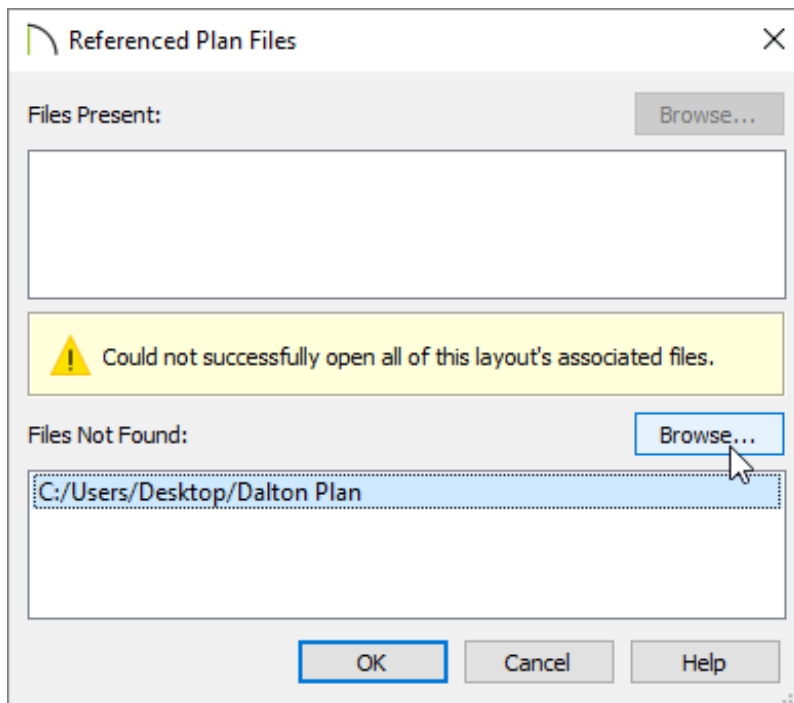
ANSWER


The reason why this dialog appears is because Chief Architect can no longer find one or more files from which views have been sent. The result of this broken link is that views sent from the original plan file can no longer be displayed in the layout.

To resolve this issue, you can re-link the layout file to the appropriate plan file(s), restoring the views in the layout. There are also some preventative measures you can take to avoid this from happening in the future.

To re-link files

1. In the **Referenced Plan Files** dialog, click on a file in the **Files Not Found** section, then click the **Browse** button.



2. In the **Browse for Missing File** dialog, browse to the location of the missing plan file, select it, then click **Open**.
3. Repeat this process for each of the files listed in the **Files Not Found** list.
4. If re-linking the files does not resolve the problem, select **File> Save As**  with the layout file open and carefully read the file name.
 - If you see a period (.) in the file name, such as the period between file and name

in this file's name: filename.plan, delete it and click the **Save** button.

- Repeat Steps 1-3 above.

You can access the Referenced Plan Files dialog at any time by navigating to Tools> Layout> Referenced Plan Files within a layout file.

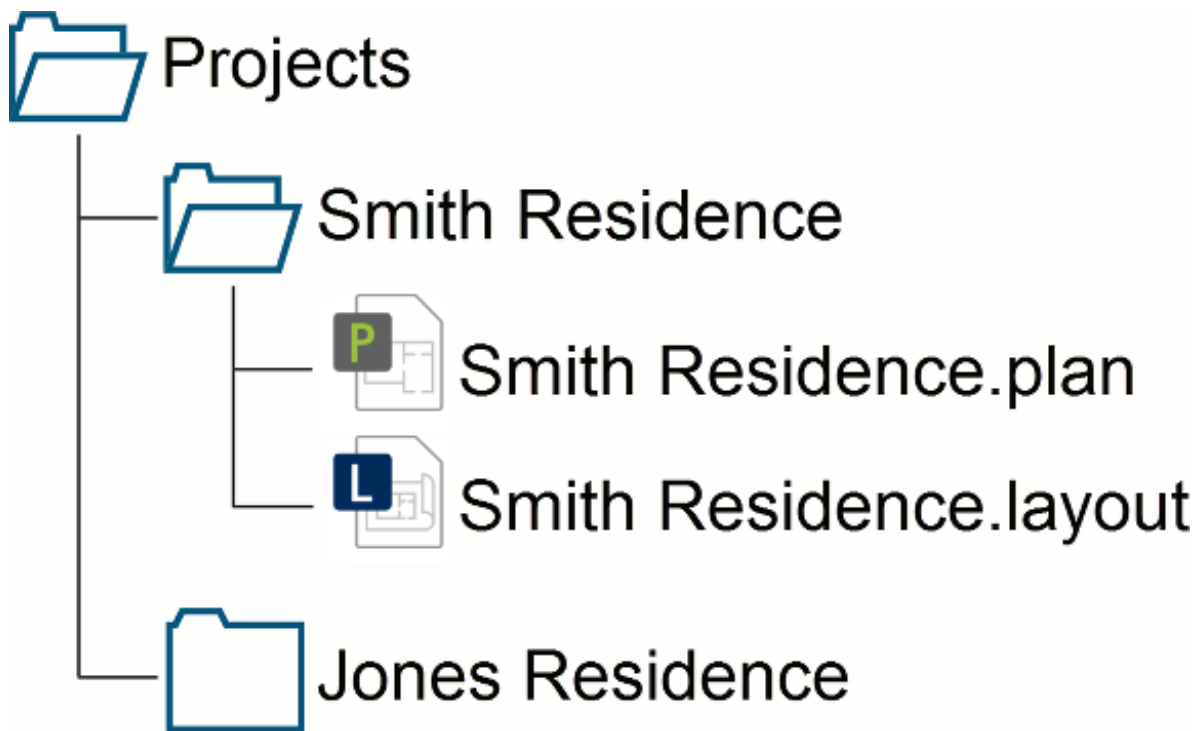
To protect layout links

When working with layout files, it is helpful to remember that views sent to layout are not actually relocated into that file. Rather, layout views can be thought of as "windows" that look back at the original view in the plan file.

One benefit of this arrangement is that if you make changes to the plan file, the changes will appear immediately in many types of layout views (floor plan view, for example). In order to do this, though, the program must be able to locate the original plan file that the views were sent from. If this file is moved or deleted, the link to the layout will be broken and the views that were sent to layout will disappear.

The following are some recommendations for maintaining links between plan and layout files:


- Save your plan and layout files in the same folder. If you import image or PDF files into either the plan or layout, it is a good idea to save a copy of that file into the same project folder as well. It is often helpful to create separate folders for each Chief Architect project.



- Avoid long file names. When naming your files, try not to use any punctuation such as periods, question marks, exclamation marks, commas, etc. Good file management usually involves organizing your files into different folders, however, try to keep the path to your file as short as possible.

As an example, the path `C:\Users\John\Documents\Projects\Smith Residence\Smith Residence.plan` is a reasonable path and the file name is descriptive enough to help identify it.

In contrast, a folder or file with a very descriptive name such as `C:\Users\John\Documents\Projects\Smith Residence\Smith Residence - 6500 N. Mineral Dr. - Gable roof with wrap around porch.plan` is an overly descriptive file name and may cause problems saving, or with auto archives and other backup systems. This is mainly due to a character limit in some file systems.

- Try to avoid moving or renaming the plan or layout file once they have been linked together. If one of these files must be moved, it is best to move them both together, along with any other referenced files. It's recommended to use the **Backup Entire Plan/Layout**  tool prior to moving files. Please see the [Related Articles](#) section to learn more.

To avoid problems related to saving or automatic backups, it is extremely important that you NOT work on files directly from the Archives folder.

Related Articles

📄 [Organizing your Plan and Layout Files \(/support/article/KB-00562/organizing-your-plan-and-layout-files.html\)](/support/article/KB-00562/organizing-your-plan-and-layout-files.html)

📄 [Using the Backup Entire Plan/Layout Tool \(/support/article/KB-00987/using-the-backup-entire-plan-layout-tool.html\)](/support/article/KB-00987/using-the-backup-entire-plan-layout-tool.html)



[\(https://chieftalk.chiefarchitect.com/\)](https://chieftalk.chiefarchitect.com/)

CA [\(/blog/\)](/blog/)



[\(/https://www.facebook.com/ChiefArchitect\)](https://www.facebook.com/ChiefArchitect)



[\(/https://www.youtube.com/user/ChiefArchitectInc\)](https://www.youtube.com/user/ChiefArchitectInc)



[\(/https://www.instagram.com/chiefarchitect/\)](https://www.instagram.com/chiefarchitect/)



[\(/https://www.houzz.com/pro/chiefarchitect/\)](https://www.houzz.com/pro/chiefarchitect/)



[\(/https://www.pinterest.com/chiefarchitect/\)](https://www.pinterest.com/chiefarchitect/)