

Inserting Multiple Appliances into a Single Cabinet

Reference Number: **KB-00059**

Last Modified: **January 9, 2026**

QUESTION

I want to have a wall oven and a warming drawer in the same cabinet. How can I do this?






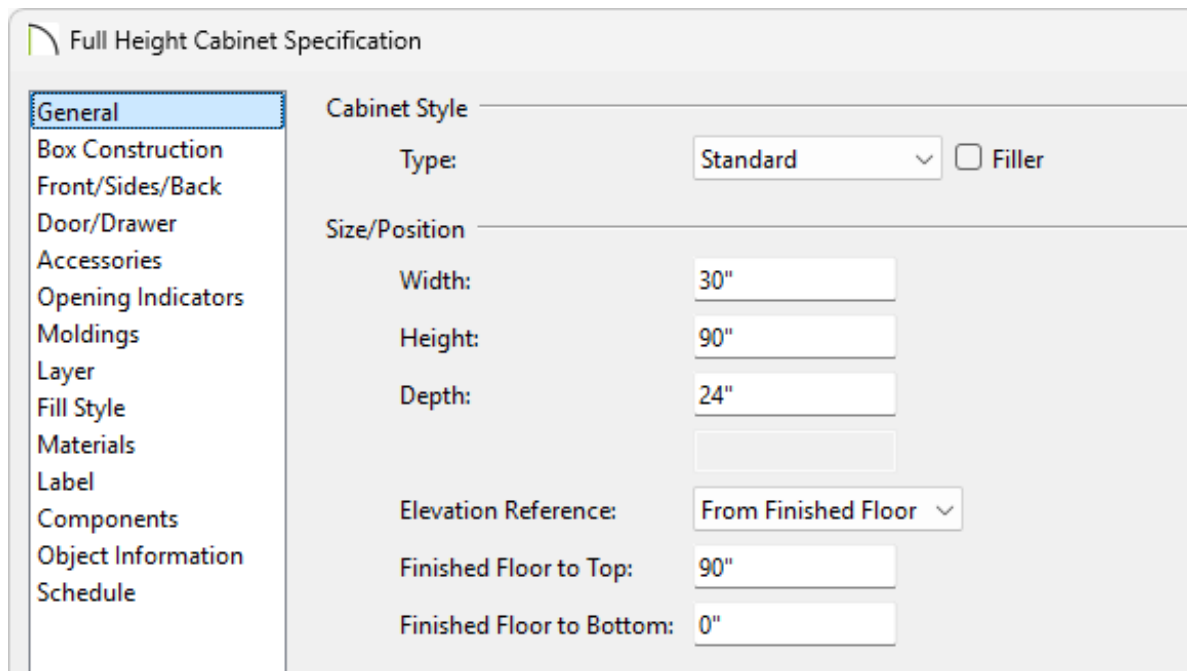
ANSWER

Easily insert multiple appliances into a single cabinet by using the Cabinet Specification dialog.

Note: The appliances used in this resource are part of the [Dacor Manufacturer Catalog \(https://www.chiefarchitect.com/3d-library/index.php?r=site/detail/1141\)](https://www.chiefarchitect.com/3d-library/index.php?r=site/detail/1141). To learn more about obtaining additional catalogs, please see the [Related Articles](#) section.

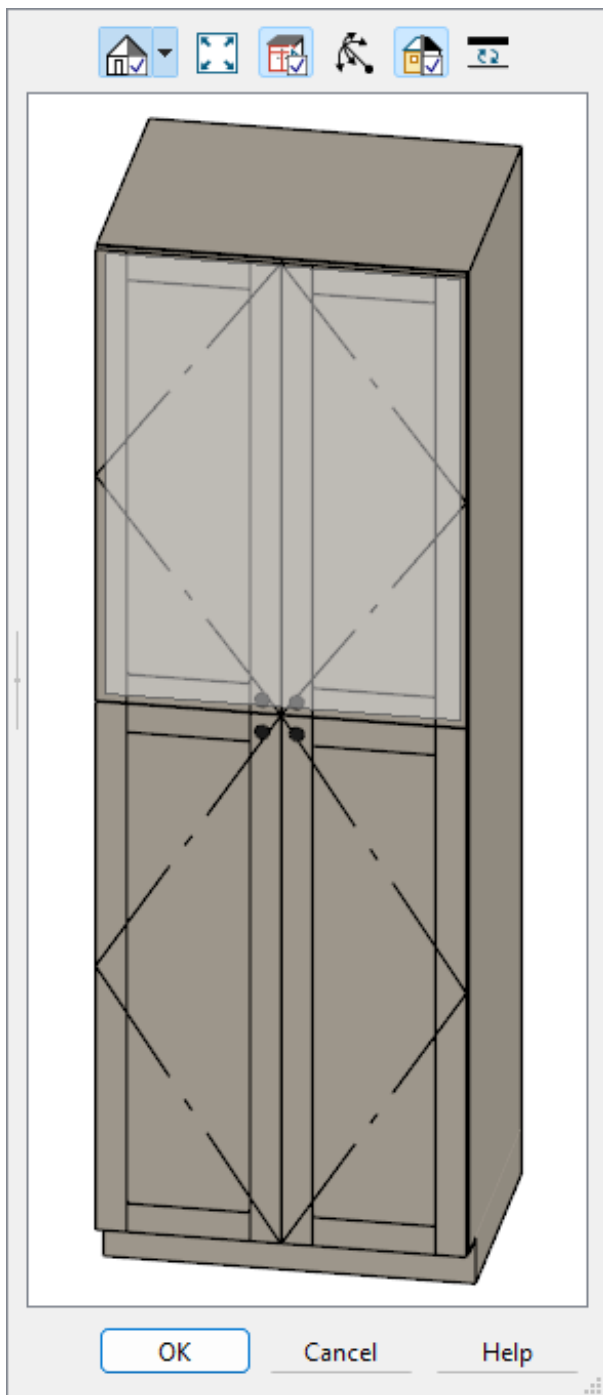
To modify the size of the cabinet

1. Select **Build> Cabinet> Full Height**  and click in your plan to place a cabinet at the location where you clicked.
2. Use the **Select Objects**  tool to select the cabinet, and click the **Open Object**  edit button to display the **Full Height Cabinet Specification** dialog.
3. On the **GENERAL** panel, specify the **Width, Height, Depth** and **Floor to Top/Bottom** values for your cabinet.



To add Face Items to the cabinet

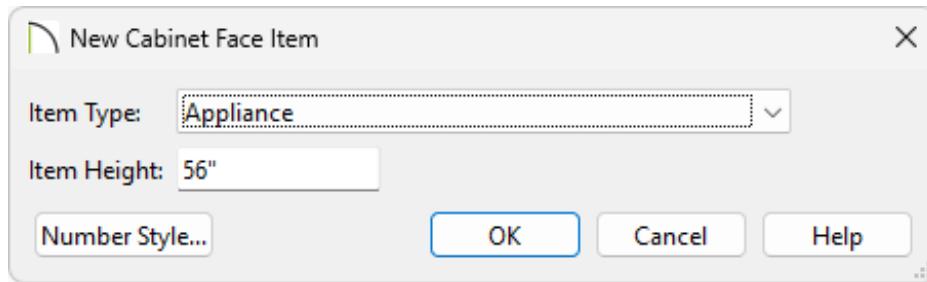
1. On the **FRONT/SIDES/BACK** panel of the **Full Height Cabinet Specification** dialog, click on the top Face Item within the 3D preview and adjust the **Item Height** to your liking.



2. With the top Face Item still selected, click the **Add New** button to add additional Face Items to the cabinet.

Note: Clicking Add New will insert a new Face Item below the currently selected item. If there is no current selection, the new Face Item will be added to the bottom.

3. In the **New Cabinet Face Item** dialog, set the **Item Type** and **Item Height**, then click **OK**.

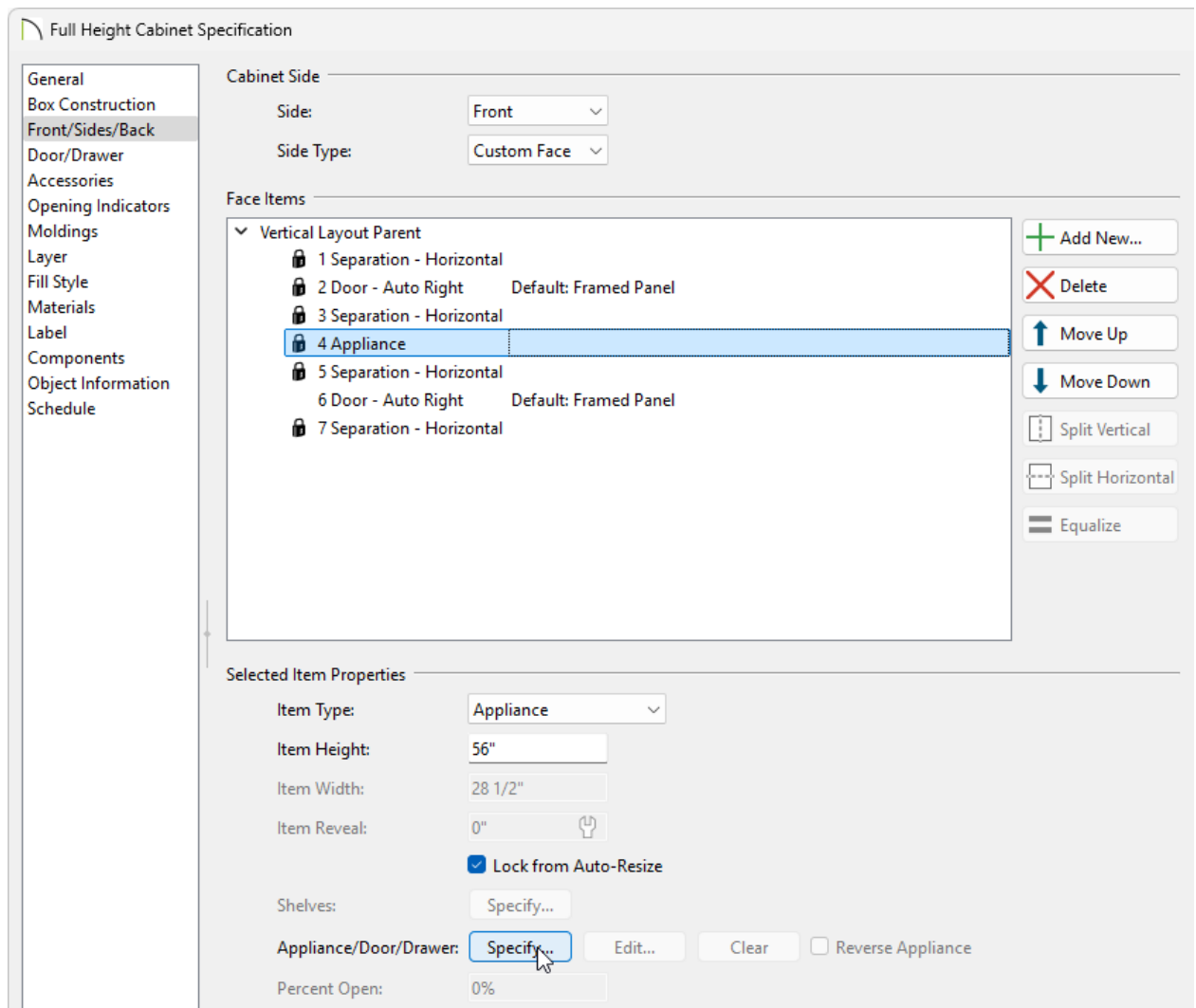


4. Use the **Move Up** and **Move Down** buttons to re-order the face items as necessary.

Note: To ensure that Face Item heights always equal the total cabinet front height, the program automatically adjusts the bottom Face Item as changes are made elsewhere. If you want to prevent a specific face item from resizing, Select the item and then check Lock from Auto-Resize.

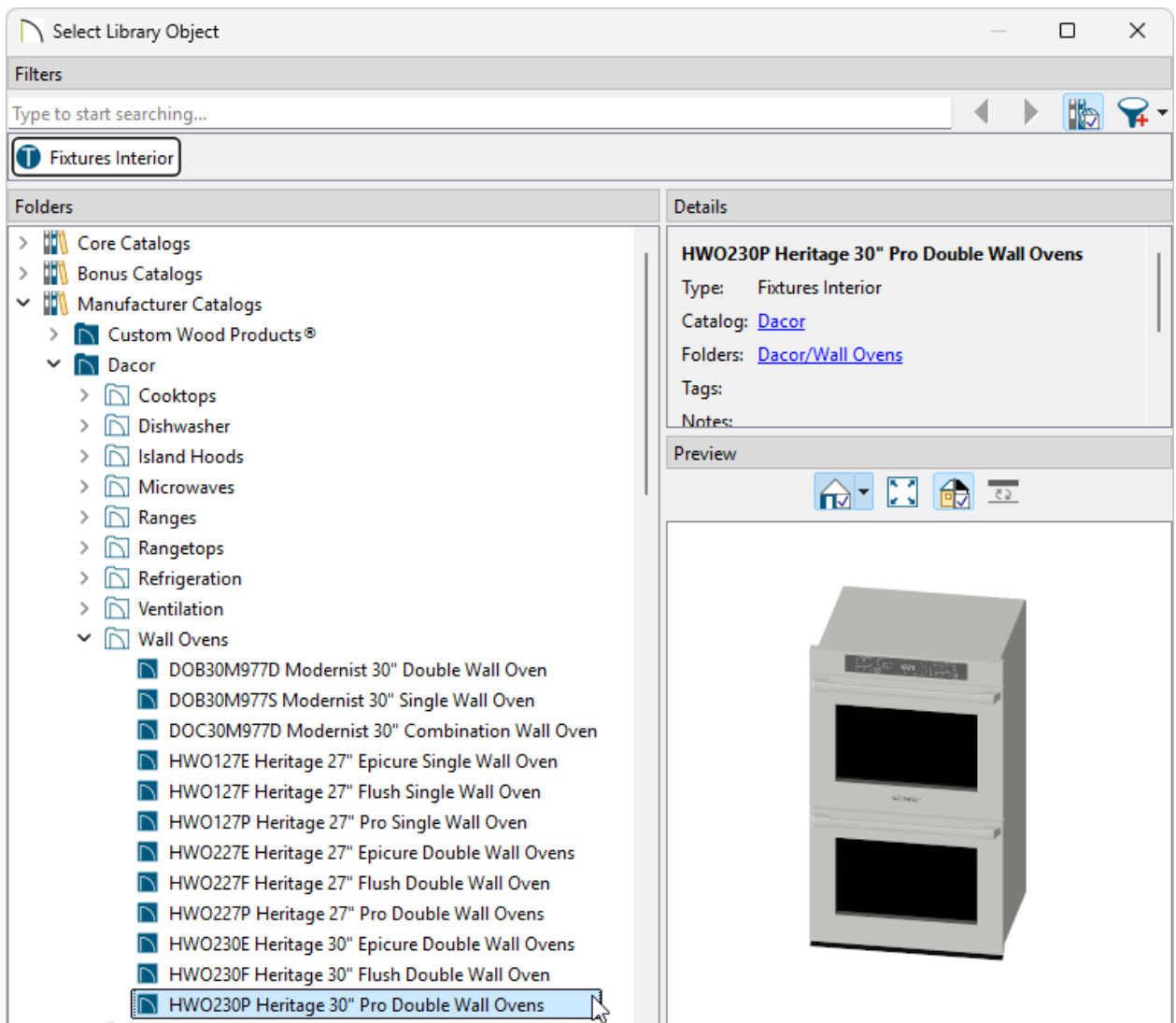
To modify individual sections to have different appliances

1. Click on the Face Item you want to modify to select it, and then click the **Specify** button next to the Appliance/Door/Drawer section.



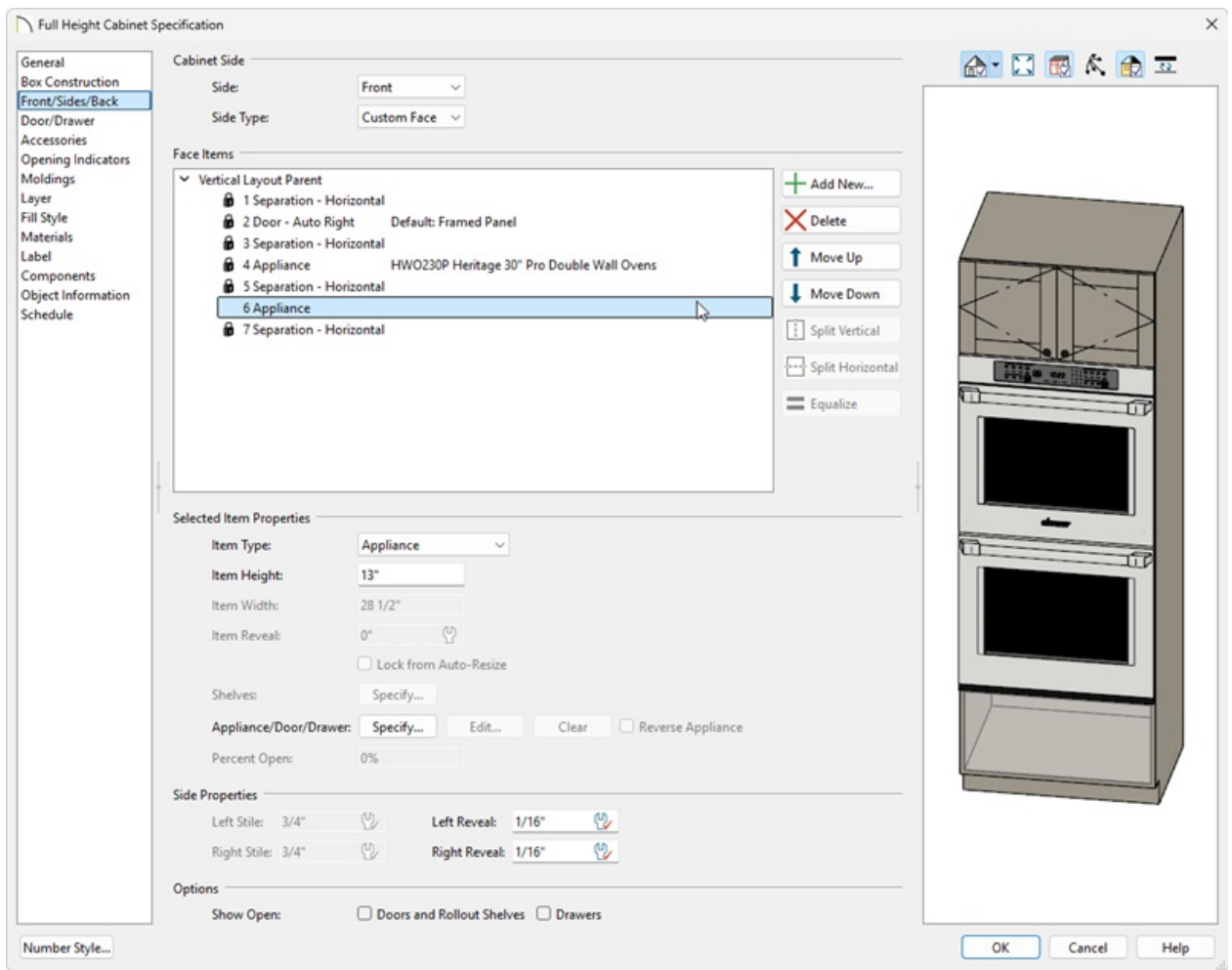
2. In the **Select Library Object** dialog, browse the library and choose the appliance you wish to insert, then click **OK**.

In this example, we browsed to **Manufacturer Catalogs> Dacor> Wall Ovens** and chose the **HWOP230P Pro Double Wall Ovens**.



3. Back in the **Full Height Cabinet Specification** dialog, click on any other Face Items you would like to add appliances to and perform the same procedure.

In this example, we chose to insert the **HWD30PS Heritage 30\" Pro Warming Drawer** at the bottom of the cabinet with an Item Height of 13\".



4. Finally, take a **Camera**  view to see the results.



Related Articles


[📄 Obtaining and Updating Library Content \(/support/article/KB-00090/obtaining-and-updating-library-content.html\)](/support/article/KB-00090/obtaining-and-updating-library-content.html)

[Using Different Door Styles on a Single Cabinet](#)

[\(/support/article/KB-00040/using-different-door-styles-on-a-single-cabinet.html\)](/support/article/KB-00040/using-different-door-styles-on-a-single-cabinet.html)



[\(https://chieftalk.chiefarchitect.com/\)](https://chieftalk.chiefarchitect.com/)

 [\(/blog/\)](/blog/)



[\(/https://www.facebook.com/ChiefArchitect\)](https://www.facebook.com/ChiefArchitect)



[\(/https://www.youtube.com/user/ChiefArchitectInc\)](https://www.youtube.com/user/ChiefArchitectInc)



[\(/https://www.instagram.com/chiefarchitect/\)](https://www.instagram.com/chiefarchitect/)



[\(/https://www.houzz.com/pro/chiefarchitect/\)](https://www.houzz.com/pro/chiefarchitect/)



[\(/https://www.pinterest.com/chiefarchitect/\)](https://www.pinterest.com/chiefarchitect/)