

Drawing an Attic Wall Manually

Reference Number: **KB-00083**

Last Modified: **July 16, 2021**

The information in this article applies to:



QUESTION


I have a gap between my deck/porch beam and the gable roof above it. How can I fill in the gap with a manual attic wall?



ANSWER

It's easy to manually create attic walls to fill in gaps, and can be beneficial in instances where the program can't determine where one is needed, or if the automatic attic wall generation setting has been turned off.

To manually add a gable wall

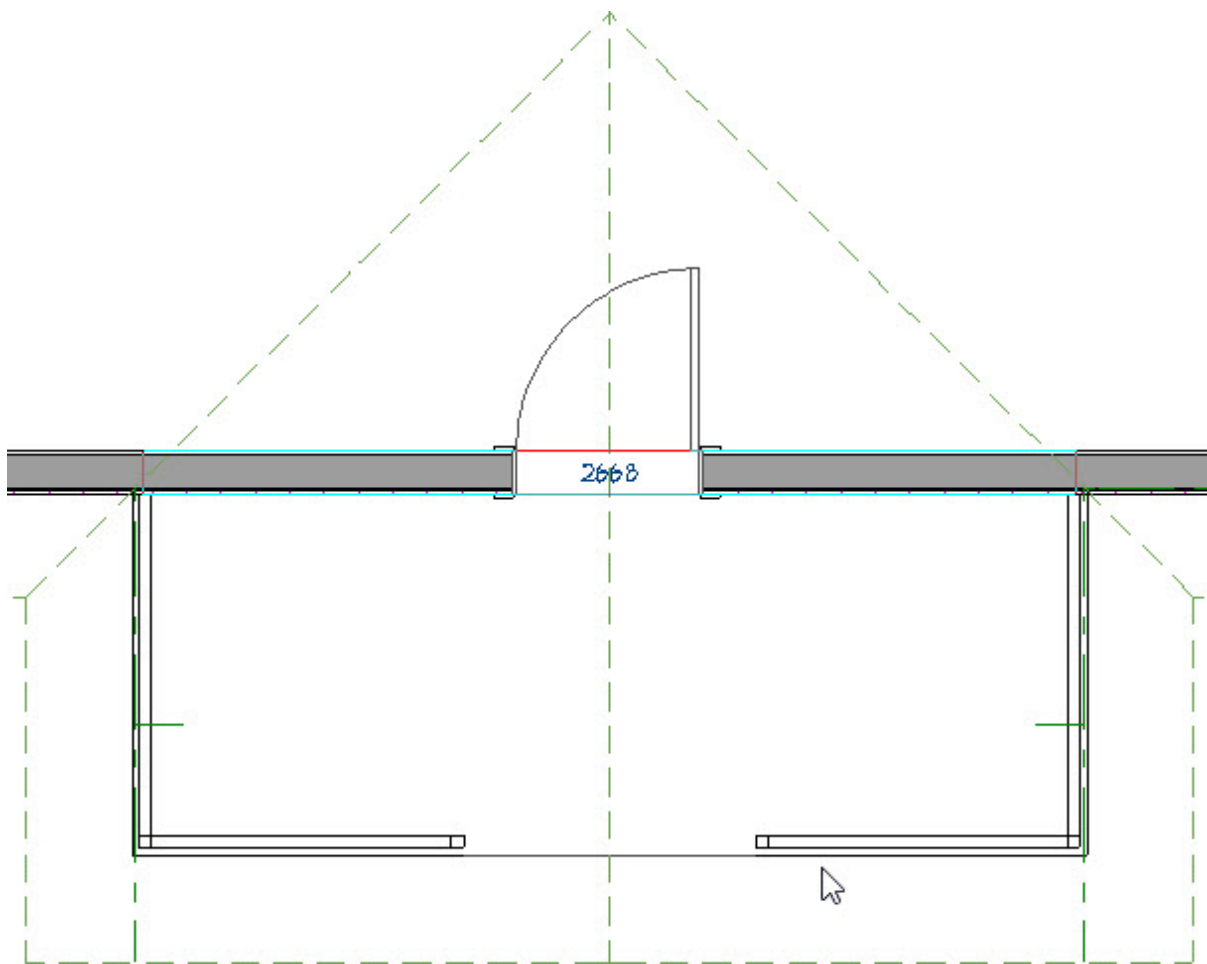
1. Launch Chief Architect and **Open**  the plan in which you need to manually draw in the gable wall.



In the example below, we want to fill in the gap between the beam above the deck railing and the underside of the gable roof planes.




2. In the 2D floor plan view, locate the wall or railing that you would like to create an attic wall for.

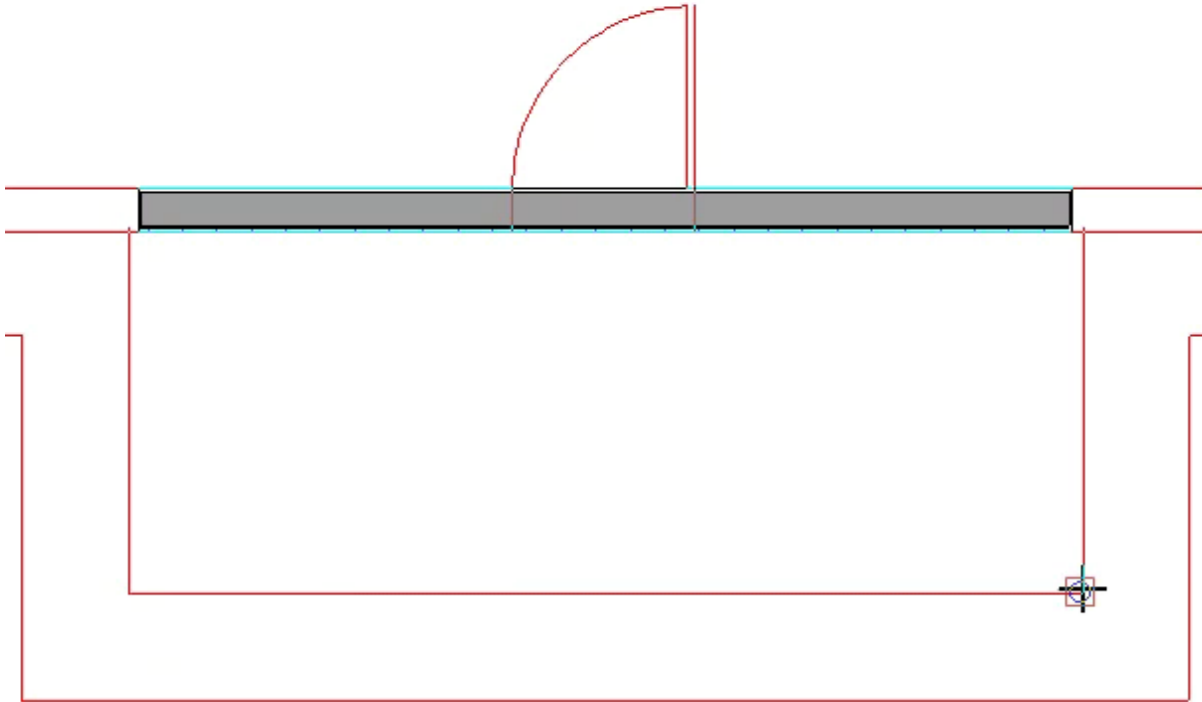
In the example below, the front railing is being focused on.





3. Next, select **Tools> Floor/Reference Display> Up One Floor**  from the menu.
4. Select **Tools> Floor/Reference Display> Reference Display** , so that a red outline of the wall/railing below displays.

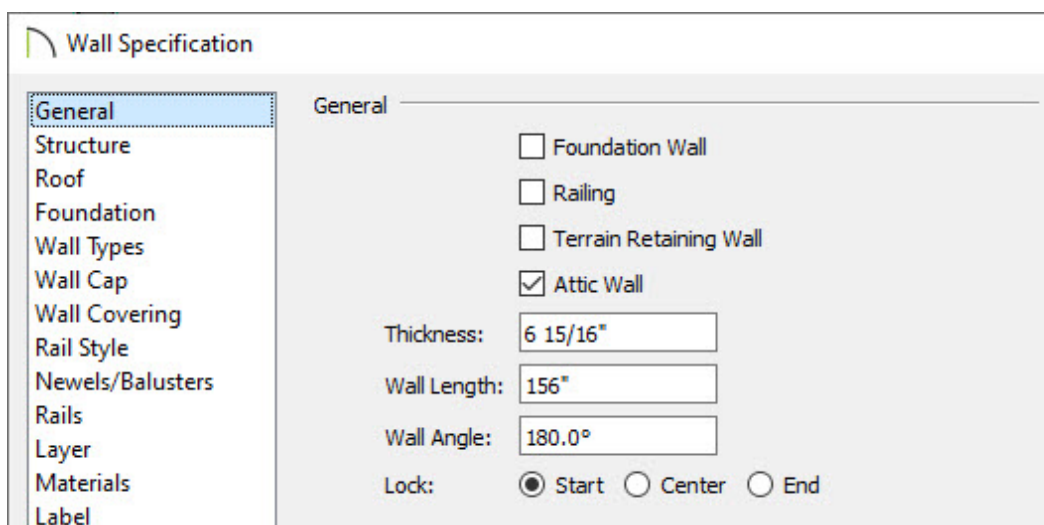
The Reference Display shows content that is placed on another floor level. For more information on using the Reference Display, please see the [Related Articles](#) section below.

5. Next, navigate to **Build> Wall> Straight Exterior Wall** , then click and drag a wall the same length as the wall/railing below it, making sure to snap to the red reference line.



If a wall is drawn on the Attic (A) level, and you receive a warning message about drawing objects on this floor, click **OK** to proceed.

6. Once created, use the **Select Objects**  tool to select the wall, then click on the **Open Object**  edit button.
7. On the **GENERAL** panel of the **Wall Specification** dialog that displays, check the **Attic Wall** box, then click **OK** to confirm the change.



8. Lastly, generate a **Camera**  view to see the results.



Related Articles

- 📄 [Message: This operation modifies one or more automatically generated walls \(/support/article/KB-00872/message-this-operation-modifies-one-or-more-automatically-generated-walls.html\)](/support/article/KB-00872/message-this-operation-modifies-one-or-more-automatically-generated-walls.html)
- 📄 [Turning off the Display of Attic Walls \(/support/article/KB-00593/turning-off-the-display-of-attic-walls.html\)](/support/article/KB-00593/turning-off-the-display-of-attic-walls.html)
- 📄 [Using the Reference Display \(/support/article/KB-00475/using-the-reference-display.html\)](/support/article/KB-00475/using-the-reference-display.html)



[\(https://chieftalk.chiefarchitect.com/\)](https://chieftalk.chiefarchitect.com/)

 [\(/blog/\)](/blog/)



[\(/https://www.facebook.com/ChiefArchitect\)](https://www.facebook.com/ChiefArchitect)



[\(/https://www.youtube.com/user/ChiefArchitectInc\)](https://www.youtube.com/user/ChiefArchitectInc)



[\(https://www.instagram.com/chiefarchitectsoftware/\)](https://www.instagram.com/chiefarchitectsoftware/)



[\(https://www.houzz.com/pro/chiefarchitect/\)](https://www.houzz.com/pro/chiefarchitect/)



[\(https://www.pinterest.com/chiefarchitect/\)](https://www.pinterest.com/chiefarchitect/)

[208-292-3400 \(tel:+1-208-292-3400\)](tel:+1-208-292-3400)

© 2000–2021 Chief Architect, Inc.

[Terms of Use \(/company/terms.html\)](/company/terms.html)

[Privacy Policy \(/company/privacy.html\)](/company/privacy.html)