

Changing the Material of the Ceiling or Flooring in a Room

Reference Number: **KB-00105**

Last Modified: **July 16, 2021**

The information in this article applies to:



QUESTION


How can I change the flooring or ceiling material in my plan?

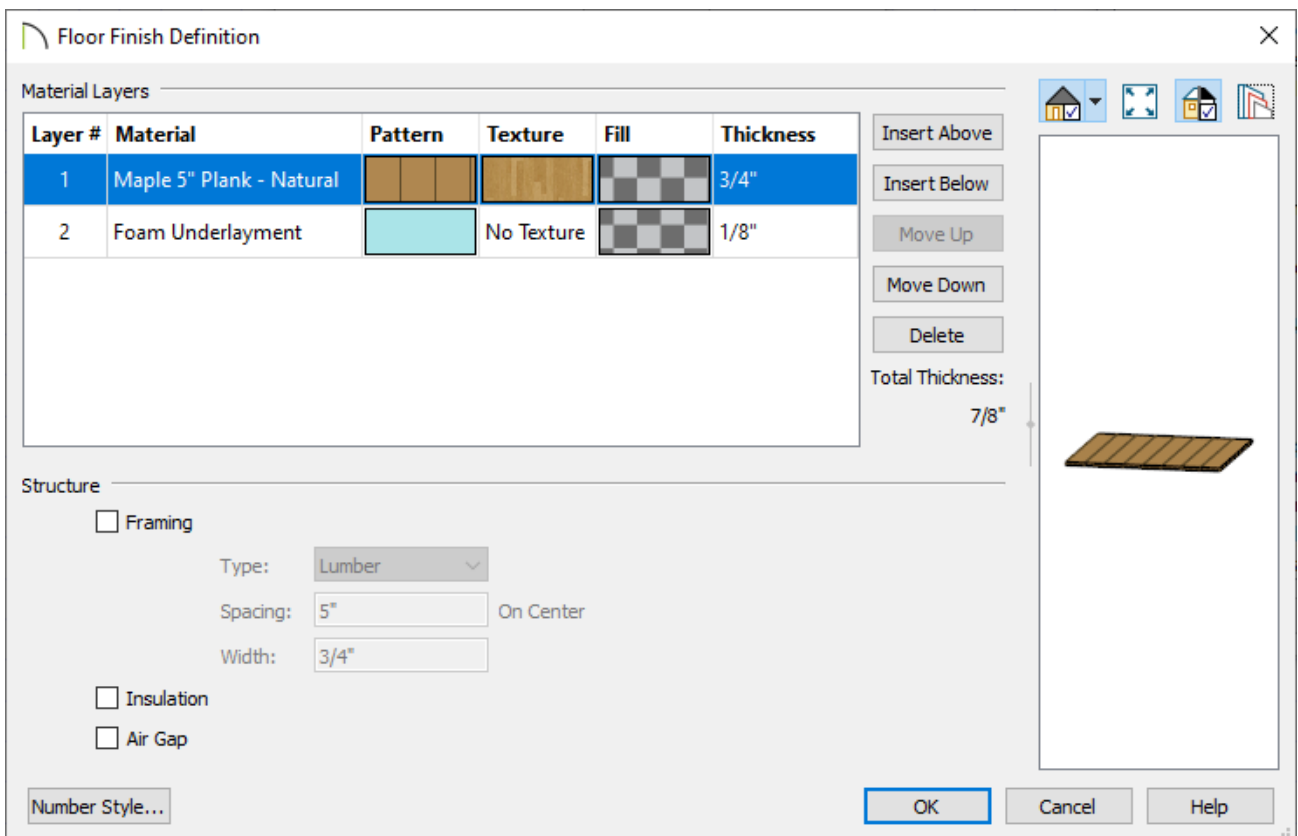


ANSWER

Flooring and ceiling materials can be specified in the Default Settings for a specific floor or an entire plan. Additionally, floor and ceiling materials can be changed for individual rooms by accessing the Room Specification dialog.

Adjusting the floor or ceiling finish using the default settings

1. From the menu, select **Edit> Default Settings** .
2. Expand the **Floors and Rooms** category, select the **Floor/Ceiling Platform** option if you want to adjust floor and ceiling finishes for all floors in a plan, or expand the **Floor Levels** subcategory, and select the floor of your choosing. Once one of these options is selected, click on the **Edit** button.
3. In the next dialog that opens, select the **Edit** button next to the **Floor Finish** or **Ceiling Finish** option, depending on what you're wanting to change.
4. In the **Floor/Ceiling Finish Definition** dialog that opens, make any desired modifications to the floor/ceiling finish layers.




- Layers can be added below or above other floor/ceiling layers by selecting a layer and clicking on the **Insert Above** or **Insert Below** buttons.
- Existing layers can be modified by clicking within the cell that correlates to the column you'd like to change.


For example, if you're wanting to change the material of a layer to something different, click on the material name for a layer. In the image above, you would want to click on the words: **Maple 5" Plank - Natural**. To adjust the thickness, click on the **3/4"** value specified for Layer #1.

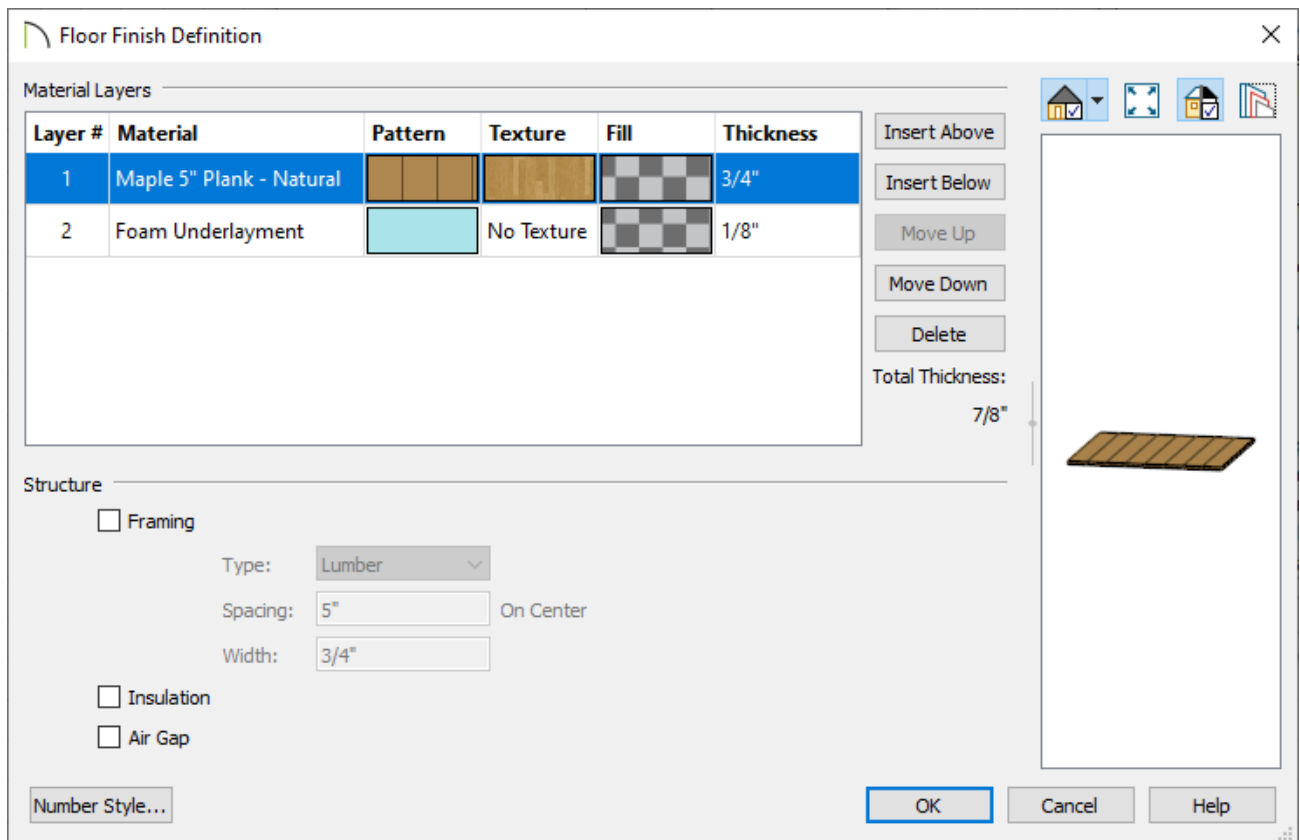
- Layers can be deleted by selecting a layer and clicking on the **Delete** button.
- To move layers, select a layer, and click on the **Move Up** or **Move Down** button to change the order.
- Once all desired changes have been made, click **OK**.

Adjusting the floor or ceiling finish using the room specification dialog

1. Using the **Select Objects**  tool, click inside of the room where you want to change the flooring or ceiling material to select it.

You can also select multiple rooms and modify them all at once. To learn more about group selecting objects, including rooms, please see the [Related Articles](#) section below.

2. Next, click on the **Open Object**  edit button to display the **Room Specification** dialog.
3. On the **STRUCTURE** panel, click on the **Edit** button next to the **Floor Finish** or **Ceiling Finish** option to display the **Floor/Ceiling Finish Definition** dialog, where you can make any desired modifications to the floor/ceiling finish layers.



- Layers can be added below or above other floor/ceiling layers by selecting a layer and clicking on the **Insert Above** or **Insert Below** buttons.
- Existing layers can be modified by clicking within the cell that correlates to the column you'd like to change.

For example, if you're wanting to change the material of a layer to something different, click on the material name for a layer. In the image above, you would want to click on the words: **Maple 5" Plank - Natural**. To adjust the thickness, click on the **3/4"** value specified for Layer #1.

- Layers can be deleted by selecting a layer and clicking on the **Delete** button.
- To move layers, select a layer, and click on the **Move Up** or **Move Down** button to change the order.
- Once all desired changes have been made, click **OK**.

Related Articles

[Applying Ceiling Materials \(/support/article/KB-00474/applying-ceiling-materials.html\)](/support/article/KB-00474/applying-ceiling-materials.html)

[📄 Changing the Color or Material of a Single Wall \(/support/article/KB-00005/changing-the-color-or-material-of-a-single-wall.html\)](/support/article/KB-00005/changing-the-color-or-material-of-a-single-wall.html)

[📄 Changing the Direction of a Material's Pattern and Texture \(/support/article/KB-00194/changing-the-direction-of-a-material-s-pattern-and-texture.html\)](/support/article/KB-00194/changing-the-direction-of-a-material-s-pattern-and-texture.html)

[📄 Creating a New Material \(/support/article/KB-00767/creating-a-new-material.html\)](/support/article/KB-00767/creating-a-new-material.html)

[📄 Customizing a Library Material \(/support/article/KB-01006/customizing-a-library-material.html\)](/support/article/KB-01006/customizing-a-library-material.html)

[📄 Group Selecting Objects \(/support/article/KB-00623/group-selecting-objects.html\)](/support/article/KB-00623/group-selecting-objects.html)



[\(https://chieftalk.chiefarchitect.com/\)](https://chieftalk.chiefarchitect.com/)

 [\(/blog/\)](/blog/)



[\(https://www.facebook.com/ChiefArchitect\)](https://www.facebook.com/ChiefArchitect)



[\(https://www.youtube.com/user/ChiefArchitectInc\)](https://www.youtube.com/user/ChiefArchitectInc)



[\(https://www.instagram.com/chiefarchitectsoftware/\)](https://www.instagram.com/chiefarchitectsoftware/)



[\(https://www.houzz.com/pro/chiefarchitect/\)](https://www.houzz.com/pro/chiefarchitect/)



[\(https://www.pinterest.com/chiefarchitect/\)](https://www.pinterest.com/chiefarchitect/)