

Using the Reflect About Object Tool

Reference Number: **KB-00284**

Last Modified: **April 22, 2024**

The information in this article applies to:




QUESTION

How can I create a flipped, mirrored, or reflected copy of an object, block, or even an entire structure?

ANSWER

Tools such as Copy/Paste, Reflect About Object, and Edit Area, will allow you to create reflected copies of one or more objects with just a few clicks.

To reflect an object about a line

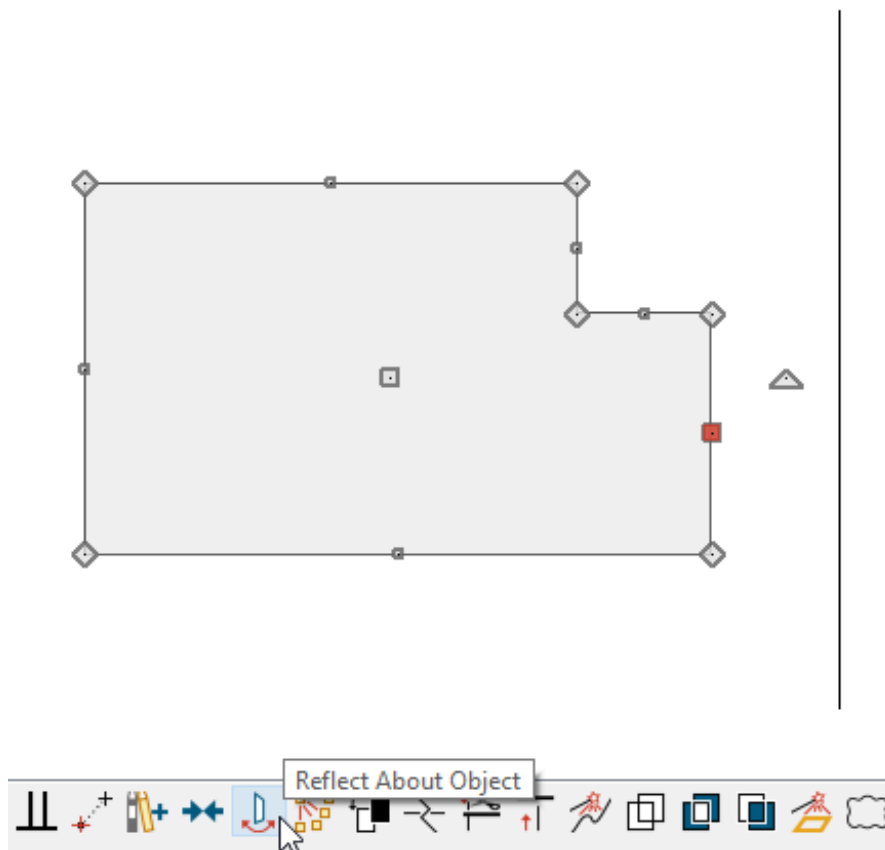
1. In your plan, select **CAD> Lines> Draw Line**  from the menu, then click and drag to draw a CAD line. This line will serve as the axis that the object will be flipped/reflected around.
 - If you wish to flip the object so that its right side becomes its left side, draw a vertical line.

- If you wish to flip the object so that its top becomes its bottom, draw a horizontal line.

2. Using the **Select Objects**  tool, click on the object that you want to reflect.

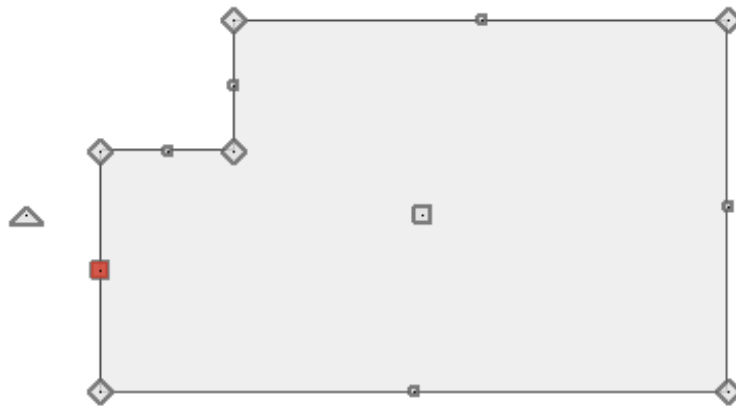
Multiple objects can also be selected and reflected all at once. Please see the article on Group Selecting Objects in the [Related Articles](#) section below.

3. Click on the **Reflect About Object**  edit button.

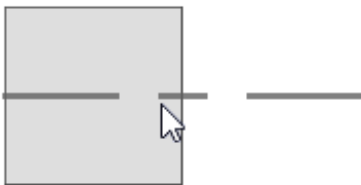


4. Click on the CAD line that you drew above.



5. The object will now be located on the other side of the line and its original orientation will be reversed.



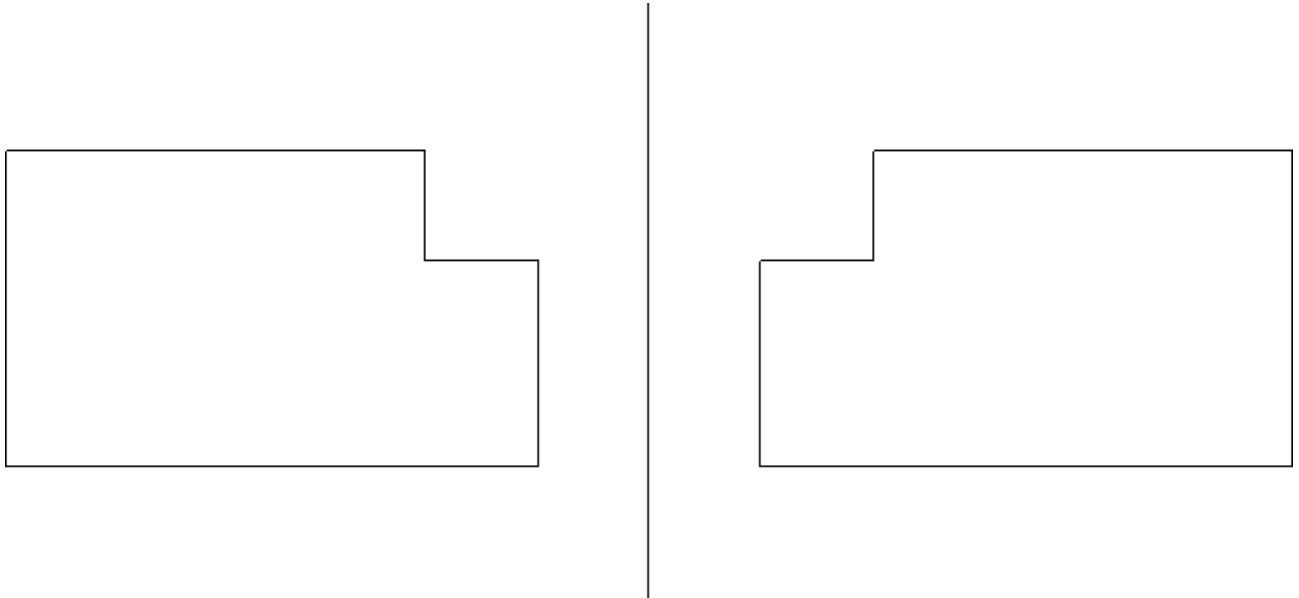
Note: In Addition to using a CAD line as your axis of reflection, other objects can be used as well. Once you click on the Reflect About Object tool, a gray dashed line will follow your cursor and snap to various points on objects that your cursor crosses. This dashed gray line is the axis the selected object will reflect about.





To copy and reflect an object

1. Begin by repeating steps 1-2 above.
2. With the object selected, click the **Copy/Paste**  edit button.
3. Click on the **Reflect About Object**  edit button.


4. Click on the CAD line.
5. A reversed copy of the object will be created on the other side of the line, while the original will remain unchanged.



To copy and reflect a structure


1. In your plan, select **Window> Fill Window**  or press the **F6** key on your keyboard to make the plan fill the Chief Architect window.
2. Select **CAD> Lines> Draw Line**  from the menu, then click and drag a line to represent the axis that you will reflect the plan across.

Draw the line reasonably close to the plan, but make sure that there is some space between the two so that you can select the plan without selecting the line as well.


3. Select **Edit> Edit Area> Edit Area(All Floors)**  from the menu, then click and drag a rectangular marquee around the entire structure.

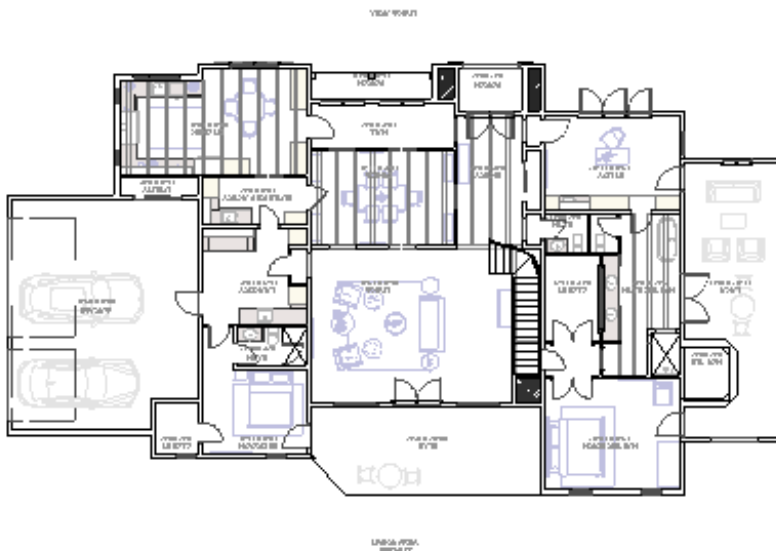
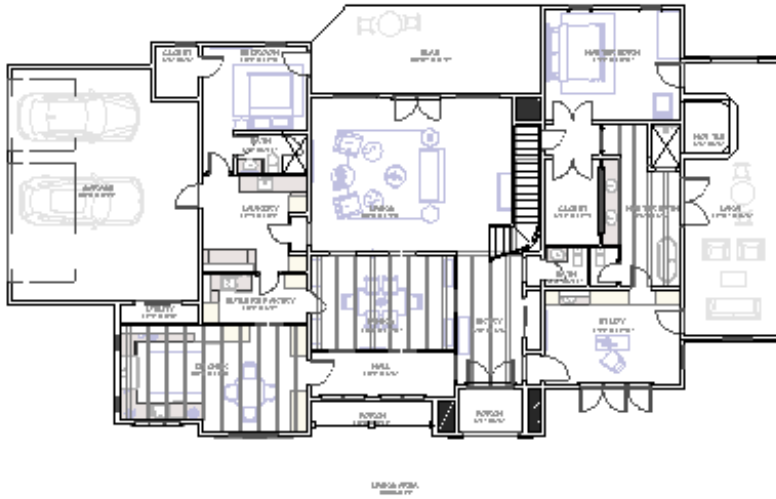


If a Terrain Perimeter is included in this selection and subsequently copied, the copy will be converted to a polyline, as only a single Terrain Perimeter can be present in a plan.

4. With the structure entirely contained in the marquee, click the **Copy/Paste**  edit button.

If you want to reverse or mirror the existing structure, and not create a copy, skip this step.

5. Click the **Reflect About Object**  edit button.
6. Click on the CAD line that you drew above.
7. A mirrored copy of the original plan will now display on the opposite side of the CAD line.



8. With the copied portion still selected, you can then adjust its position next to the other structure, if required, such as in a duplex scenario.

This is also a good time to take a few moments to examine the plan for any objects that did not reflect as expected. Some objects - notably roofs, dormers, and framing objects - may require additional attention.

Related Articles

[!\[\]\(950a62bbddad88d64435fd35607dfc42_img.jpg\) Copying an Item from the First Floor to the Same Position on the Second Floor](#)

[\(/support/article/KB-00172/copying-an-item-from-the-first-floor-to-the-same-position-on-the-second-floor.html\)](/support/article/KB-00172/copying-an-item-from-the-first-floor-to-the-same-position-on-the-second-floor.html)

[📄 Duplicating a Floor Plan on Another Level \(/support/article/KB-00012/duplicating-a-floor-plan-on-another-level.html\)](#)

[📄 Group Selecting Objects \(/support/article/KB-00623/group-selecting-objects.html\)](#)



[\(https://chieftalk.chiefarchitect.com/\)](https://chieftalk.chiefarchitect.com/)

[📄 \(/blog/\)](#)



[\(https://www.facebook.com/ChiefArchitect\)](https://www.facebook.com/ChiefArchitect)



[\(https://www.youtube.com/user/ChiefArchitectInc\)](https://www.youtube.com/user/ChiefArchitectInc)



[\(https://www.instagram.com/chiefarchitect/\)](https://www.instagram.com/chiefarchitect/)



[\(https://www.houzz.com/pro/chiefarchitect/\)](https://www.houzz.com/pro/chiefarchitect/)



[\(https://www.pinterest.com/chiefarchitect/\)](https://www.pinterest.com/chiefarchitect/)