

# Using the Space Planning Assistant

---

Reference Number: **KB-00349**

Last Modified: **August 16, 2021**

---

The information in this article applies to:



## QUESTION

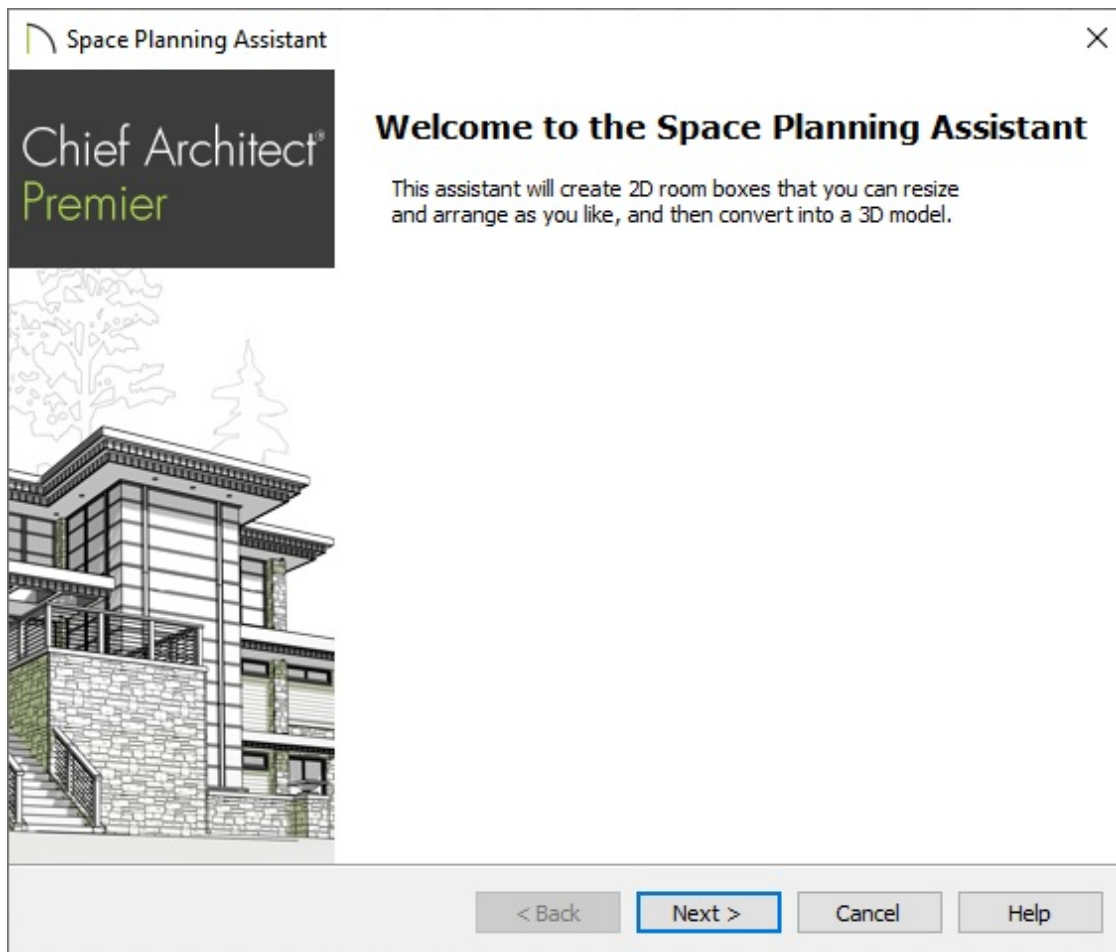
How do I use the Space Planning Assistant to layout a new floor plan?

## ANSWER

The Space Planning Assistant allows you to start a new floor plan by creating and arranging 2D room boxes. Once the boxes are laid out, the Build House tool will convert them to walls and rooms that can be edited and detailed to completion.

To use the Space Planning Assistant

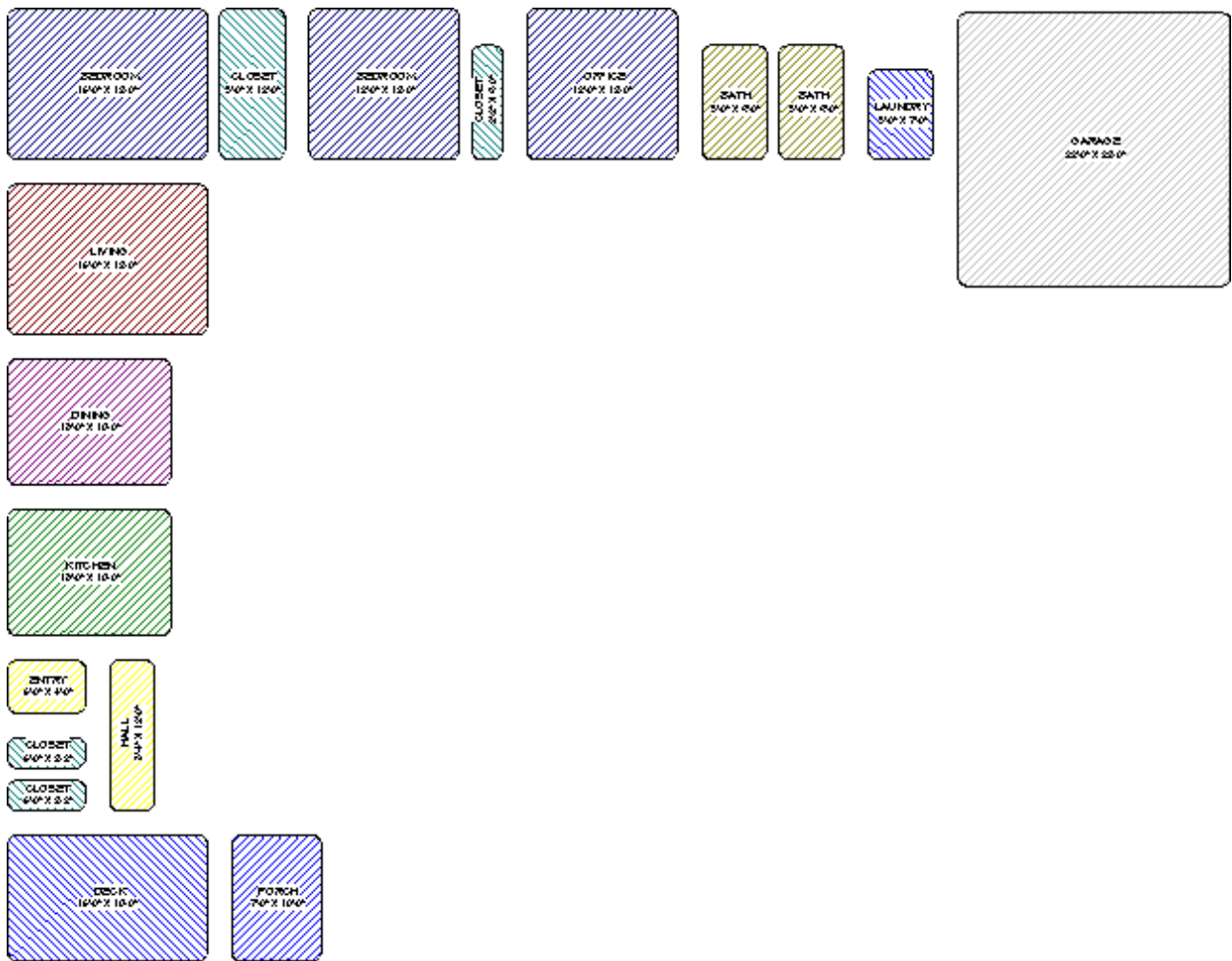
1. From the menu, navigate to **Tools> Space Planning> Space Planning**  to open the Space Planning Assistant.




2. The Assistant will prompt you to enter the number of floors you want, the garage properties, as well the type of rooms you'd like for each floor level.



**Note:** Each bedroom defined in the Space Planning Assistant will also produce a closet.

3. After selecting **Finish** in the Assistant, individual room boxes will appear on each floor level based upon the properties you've specified.





Similar to other objects in Chief Architect, room boxes can be selected and opened to specification. Several attributes, such as the Room Name, Function, and Size of the box, can be adjusted to your liking.

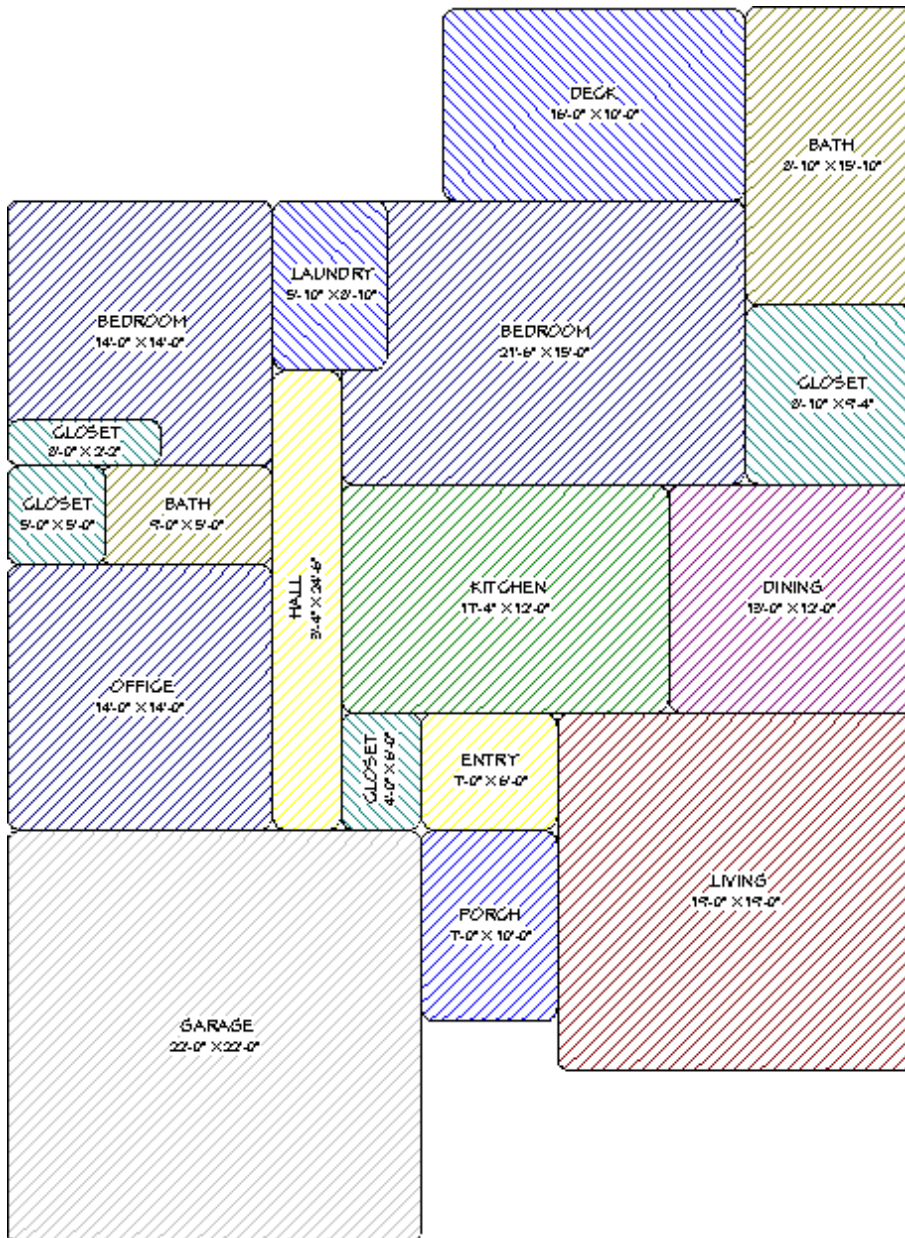
- If additional rooms need to be added, select **Tools> Space Planning**  from the menu, select the room type you'd like to add, then click in the plan to place it.

To delete a room, select it using the **Select Objects**  tool, then click the **Delete**  edit button or press the **Delete** button on the keyboard.

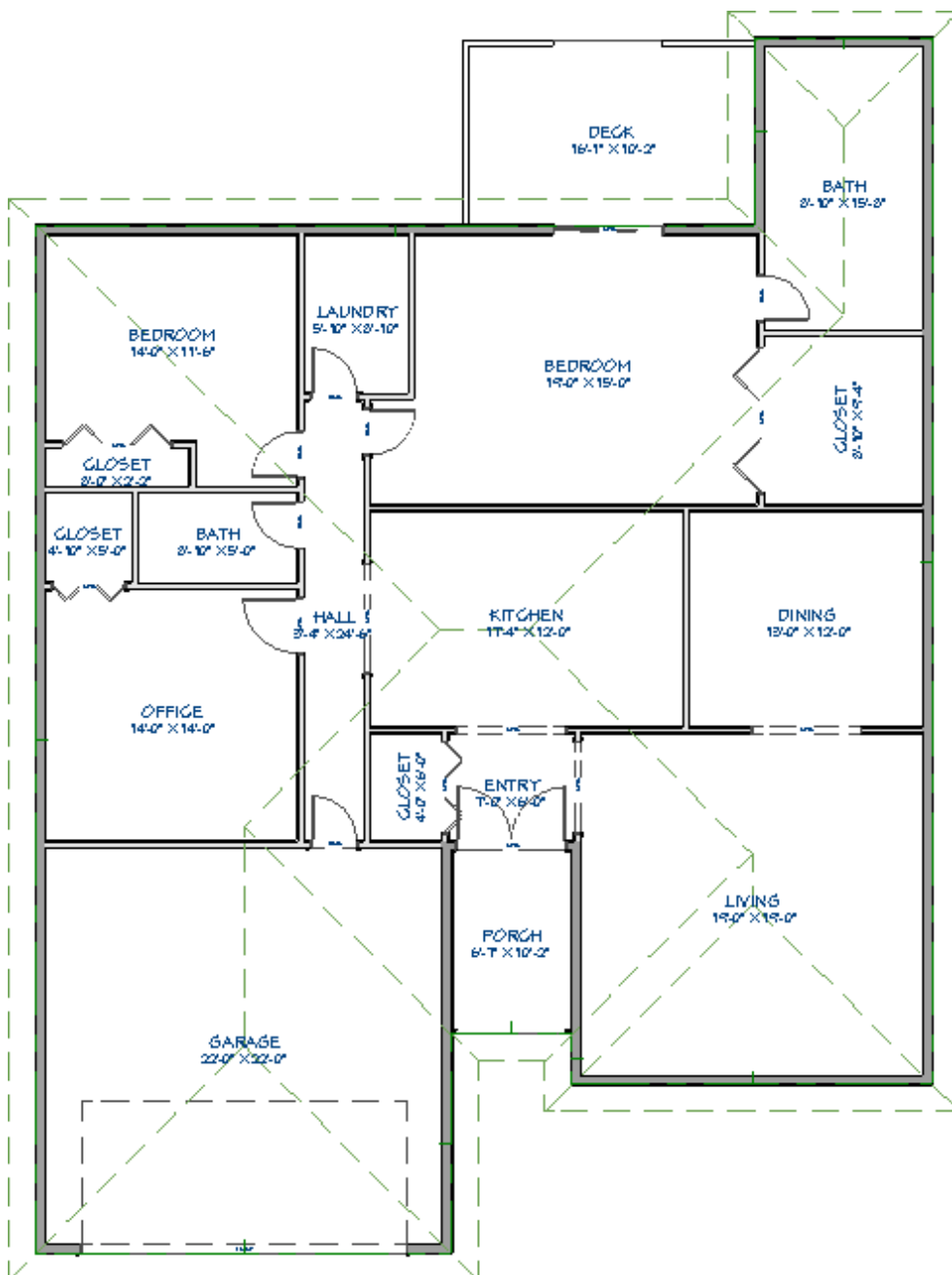
- Once all of the rooms you need for your home are on the plan, they can be moved and resized to your liking.

To move a room, select it using the **Select Objects**  tool, then use the square **Move**  edit handle that displays in the middle to move it to the desired location. To resize a room, click on one of the side edit handles and drag it to enlarge or reduce the size.

**Note:** Try and place rooms so their sides are just barely touching. Small gaps or overlaps are okay. Placing a smaller room inside of a larger room is also acceptable as long as the smaller room is sharing at least one edge with the larger room it's contained within. If two rooms overlap, the smaller of the two will take its space from the larger room.



- After the rooms are positioned and correctly sized, select **Tools> Space Planning> Build House** 🏠 on each floor level. The room boxes will be converted into walls and rooms, and doors will be created. If Auto Rebuild Roofs is enabled, automatic roof planes will also generate.



7. Select **3D> Create Perspective View> Perspective Floor Overview**  to see the results.



8. Additional modifications can now be made to the generated walls, doors, and rooms. You can also add additional room boxes at anytime, then perform step 6 again to generate additional walls, doors, and rooms in the plan.


---

#### Related Articles

- [📄 Changing How Square Footage is Calculated \(/support/article/KB-00424/changing-how-square-footage-is-calculated.html\)](/support/article/KB-00424/changing-how-square-footage-is-calculated.html)
- [📄 Creating an Open Below Room \(/support/article/KB-00078/creating-an-open-below-room.html\)](/support/article/KB-00078/creating-an-open-below-room.html)
- [📄 Displaying the Square Footage of a Room \(/support/article/KB-00009/displaying-the-square-footage-of-a-room.html\)](/support/article/KB-00009/displaying-the-square-footage-of-a-room.html)
- [📄 Duplicating a Floor Plan on Another Level \(/support/article/KB-00012/duplicating-a-floor-plan\)](/support/article/KB-00012/duplicating-a-floor-plan)



[\(https://chieftalk.chiefarchitect.com/\)](https://chieftalk.chiefarchitect.com/)

 [\(/blog/\)](#)



<https://www.facebook.com/ChiefArchitect>



<https://www.youtube.com/user/ChiefArchitectInc>



<https://www.instagram.com/chiefarchitectsoftware/>



<https://www.houzz.com/pro/chiefarchitect/>



<https://www.pinterest.com/chiefarchitect/>