

Changing an Existing Wall's Type

Reference Number: **KB-00443**

Last Modified: **February 5, 2019**

The information in this article applies to:



QUESTION

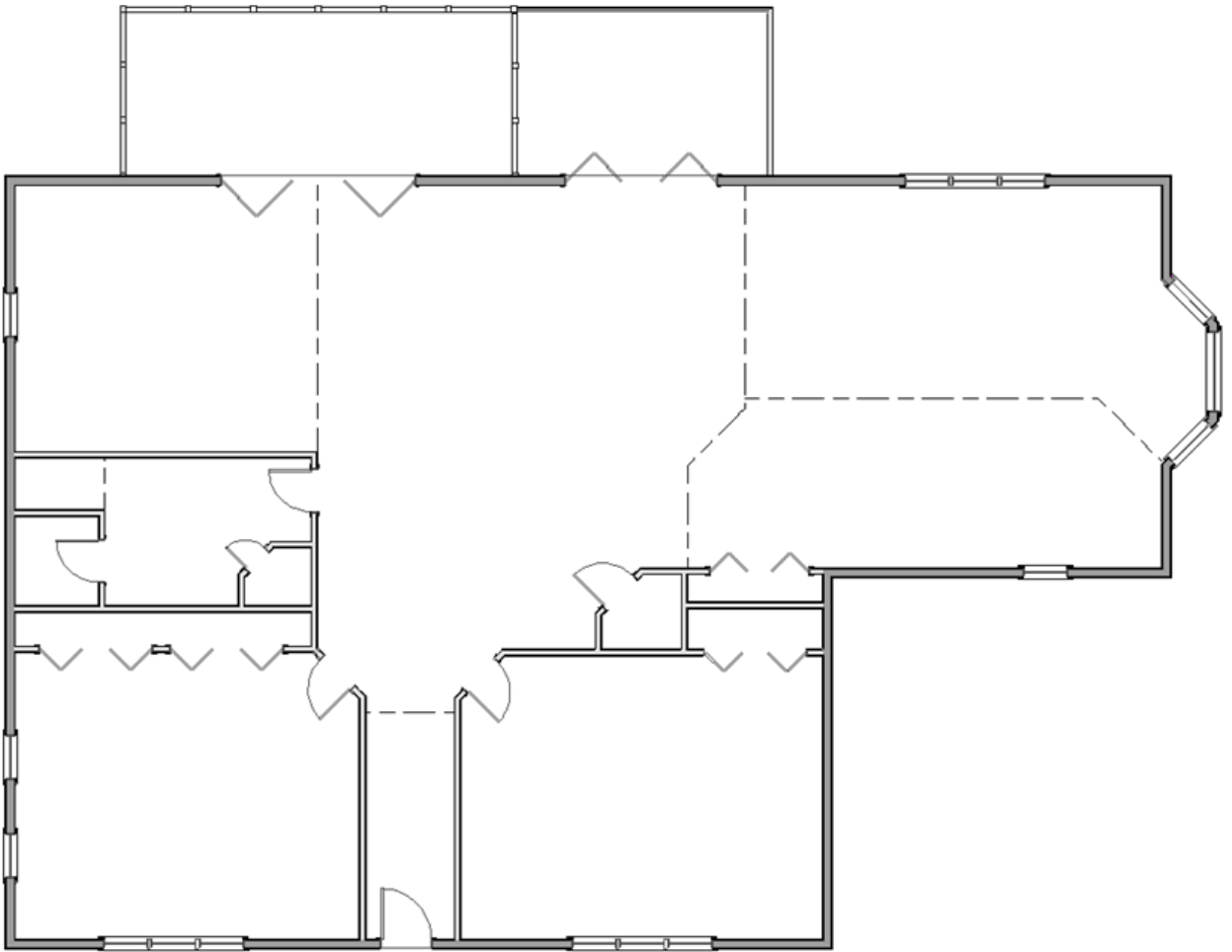
I have already placed a wall in my plan, but now realize I used the wrong wall tool or wall type. Do I have to delete and redraw the wall, or is there an easy way to change the wall type?

ANSWER

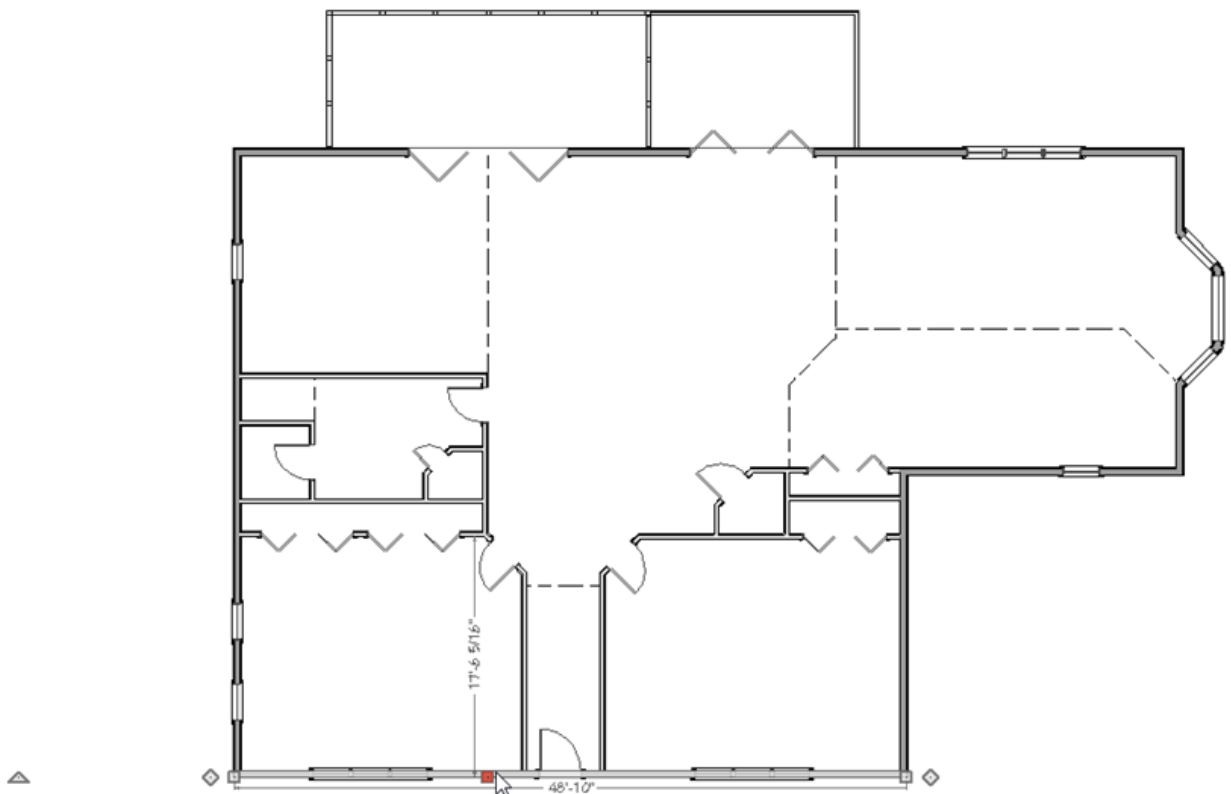
Wall types can be changed after the walls are drawn by using the Wall Specification dialog.


To change an individual wall

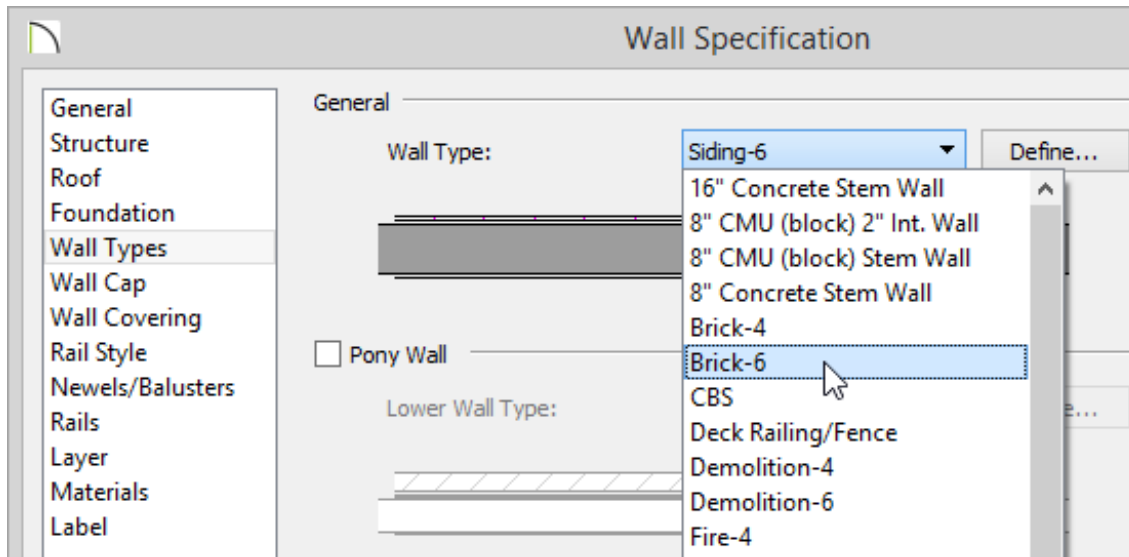
1. First, launch Chief Architect and **Open**  the plan that has the wall that you want to modify.



2. Next, using the **Select Objects**  tool, select the wall.





3. Click on the **Open Object**  button to display the **Wall Specification** dialog.
4. On the **WALL TYPES** panel, use the drop-down menu to select the appropriate wall type.

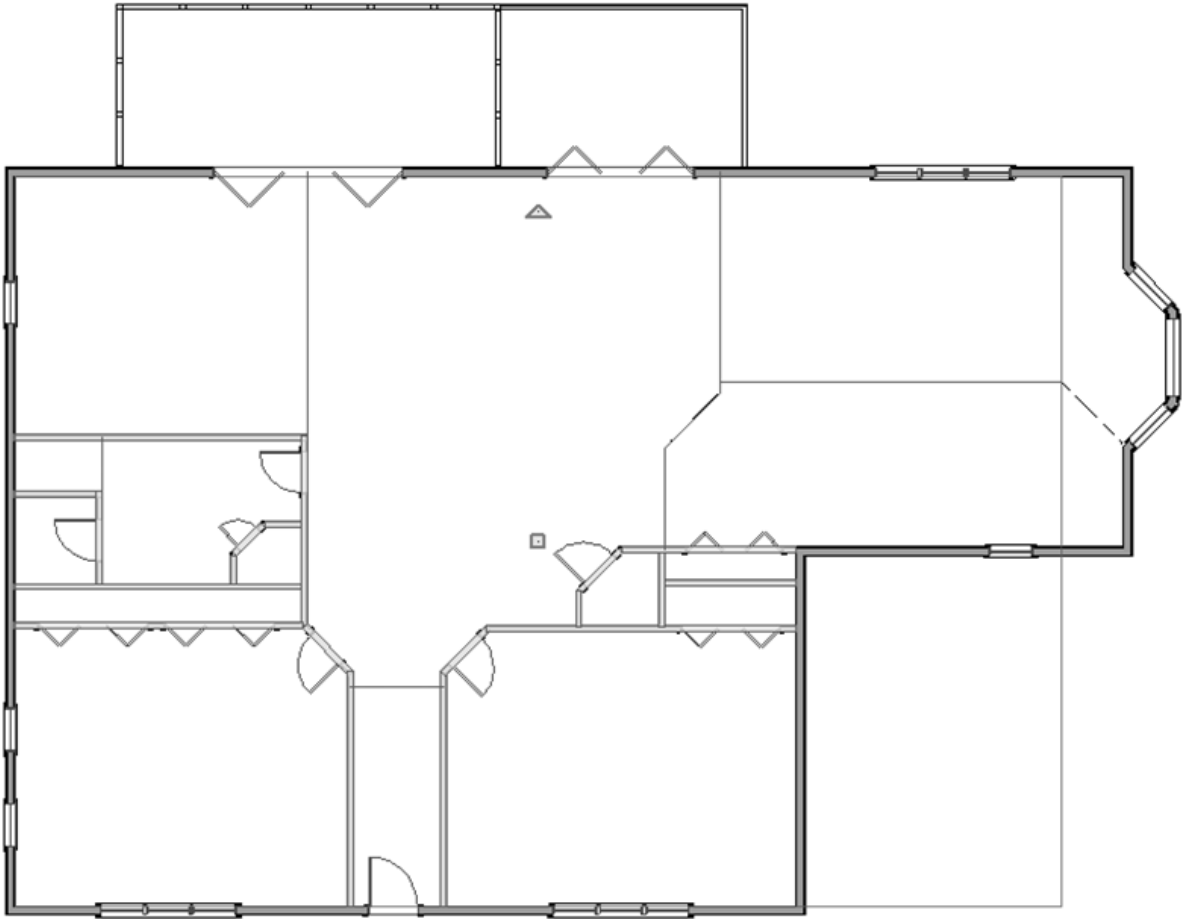


5. Once you have selected the appropriate wall type, click **OK** to apply this change

Sometimes you need to change the type of multiple walls such as if you have accidentally drawn all of your interior walls using an exterior wall type.


To change multiple walls at once

1. First, launch Chief Architect and **Open**  the plan that has the walls that you want to modify.
2. Next, using the **Select Objects**  tool, select one wall, then hold down the **Shift key** on your keyboard, and click to select the remaining walls in the plan that you want to change.



The status bar in the lower left corner will show the number of objects that are currently selected.

If you have trouble selecting walls because of other objects in the same area, you may find it helpful to have a wall tool active when clicking on the walls to group select them, or to create a custom layer set in which only your wall layers are displayed.

3. Click on the **Open Object**  edit button to display the **Wall Specification** dialog for all of these walls.
4. On the **WALL TYPES** panel, use the drop-down menu to select the appropriate wall type as done in the section above.
5. Once you have selected the appropriate wall type to change these walls to, click **OK**

to apply the change.

[208-292-3400 \(tel:+1-208-292-3400\)](tel:+1-208-292-3400)

© 2000–2019 Chief Architect, Inc.

[Terms of Use \(/company/terms.html\)](/company/terms.html)

[Privacy Policy \(/company/privacy.html\)](/company/privacy.html)