

# Controlling the Display of the Crosshairs

---

Reference Number: **KB-00610**

Last Modified: **July 16, 2021**

---

The information in this article applies to:



## QUESTION





When drawing in Chief Architect, I am used to my mouse pointer being a precision crosshair. It is instead displaying as a regular pointer or a text cursor.

What do I need to do to get the crosshairs back?

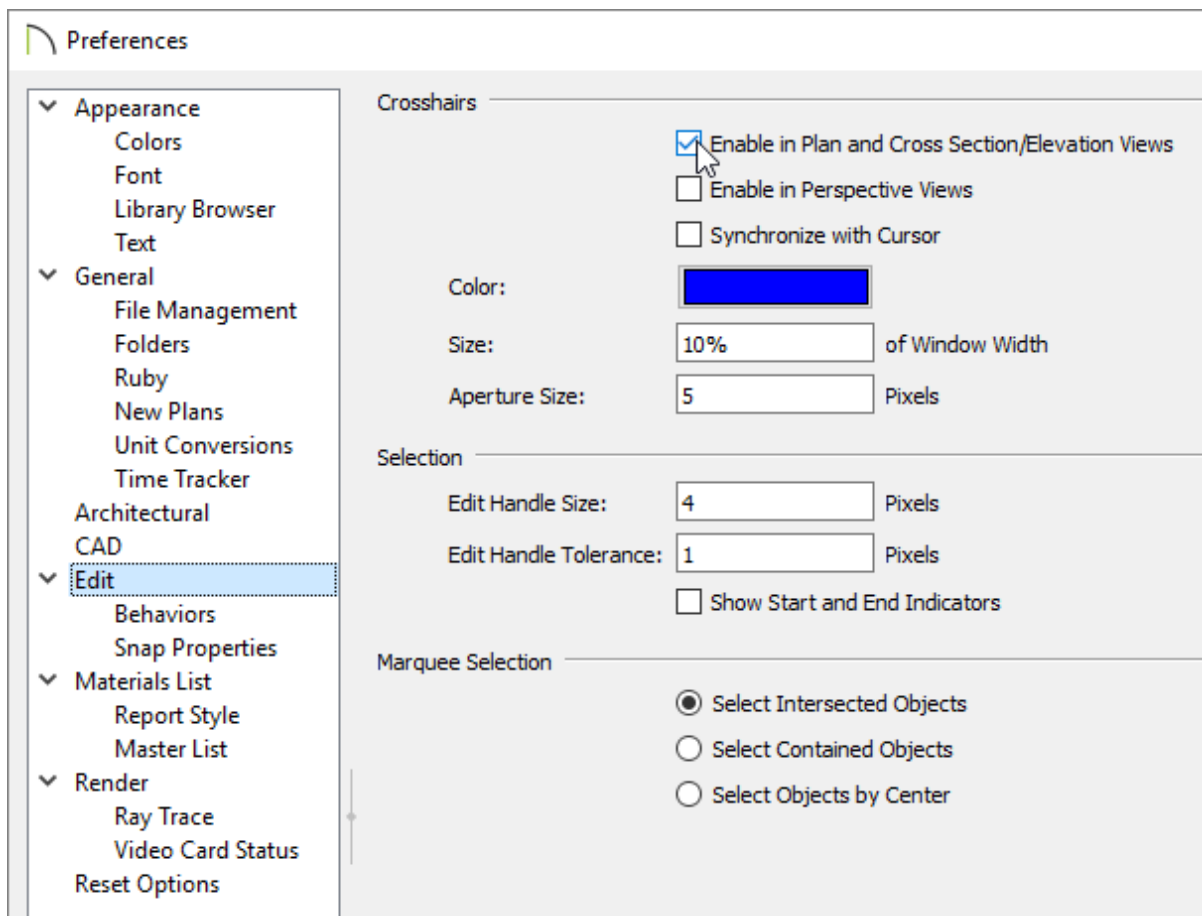
## ANSWER

The crosshairs are controlled by program preferences for all plans.

To control the display of the Crosshairs

1. First, launch Chief Architect and choose the **New Plan**  option; or you can start a new plan by going to **File> New Plan** .
2. Select **Edit> Preferences**  if you're on a Windows PC or **Chief Architect> Preferences**  if you're on a Mac.

3. In the **Preferences** dialog, select the **EDIT** panel.




- Check **Enable in Plan and Cross Section/Elevation Views** to use a crosshair cursor in floor plan, cross section and elevation views. This option is checked by default.
- Check **Enable in Perspective Views** to use a crosshair cursor in perspective camera views and overviews.
- When **Synchronize with Cursor** is checked, the mouse pointer and crosshairs always move together on screen. If you feel that they do not keep up with your mouse movements, try unchecking this option.
- Click the color bar to open the **Color Chooser** dialog and specify the color of the crosshairs.
- Crosshair size is specified as a percentage of the width of the view window. Specify the **Size (%) of Window Width** as **100%** to extend the cross hairs across the entire screen.
- Set the **Aperture Size**, measured in pixels. The aperture is the space where the crosshairs meet. A value of 0 makes the cross hairs meet at a point. Larger numbers

leave a gap in the center.

4. Once you have made any desired changes to the display of the crosshairs, click **OK** to apply and close the **Preferences** dialog.



[\(https://chieftalk.chiefarchitect.com/\)](https://chieftalk.chiefarchitect.com/)

 [\(/blog/\)](#)



<https://www.facebook.com/ChiefArchitect>



<https://www.youtube.com/user/ChiefArchitectInc>



<https://www.instagram.com/chiefarchitectsoftware/>



<https://www.houzz.com/pro/chiefarchitect/>



<https://www.pinterest.com/chiefarchitect/>

[208-292-3400 \(tel:+1-208-292-3400\)](tel:+1-208-292-3400)

© 2000–2021 Chief Architect, Inc.

[Terms of Use \(/company/terms.html\)](#)

[Privacy Policy \(/company/privacy.html\)](#)