

Specifying Which Wall Layer Exterior Dimensions Locate

Reference Number: **KB-00658**

Last Modified: **April 8, 2022**

The information in this article applies to:




QUESTION


I would like Auto Exterior Dimensions to locate the sheathing layer of my exterior walls. How can I have exterior dimensions locate specific wall layers in a particular wall type?

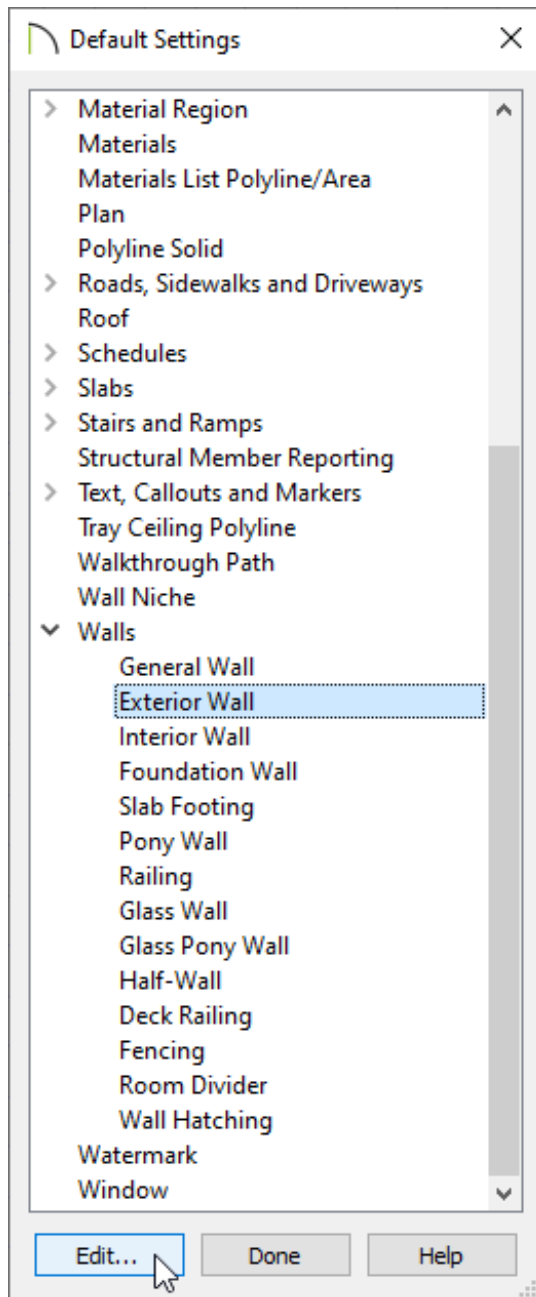
ANSWER

By default, a wall type's Main Layer is also its Wall Dimension Layer. You can, however, specify a different Wall Dimension Layer in the Wall Type Definitions dialog.

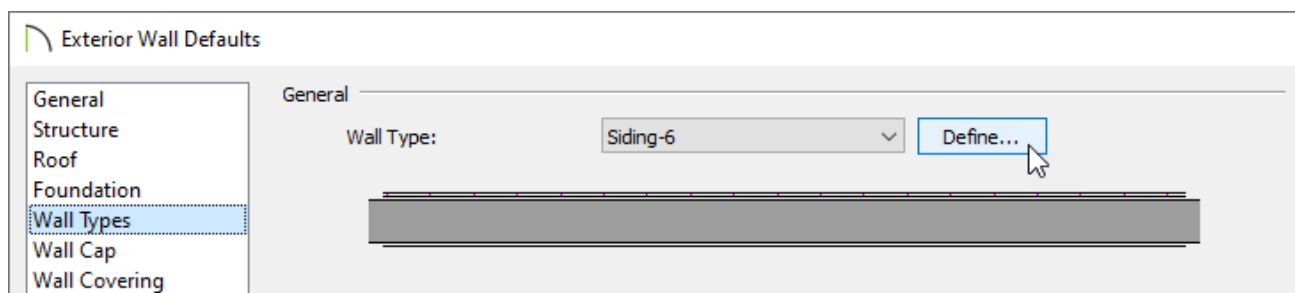
To specify the Wall Dimension Layer

1. **Open**  the drawing in which you would like to change how exterior dimensions locate exterior walls.

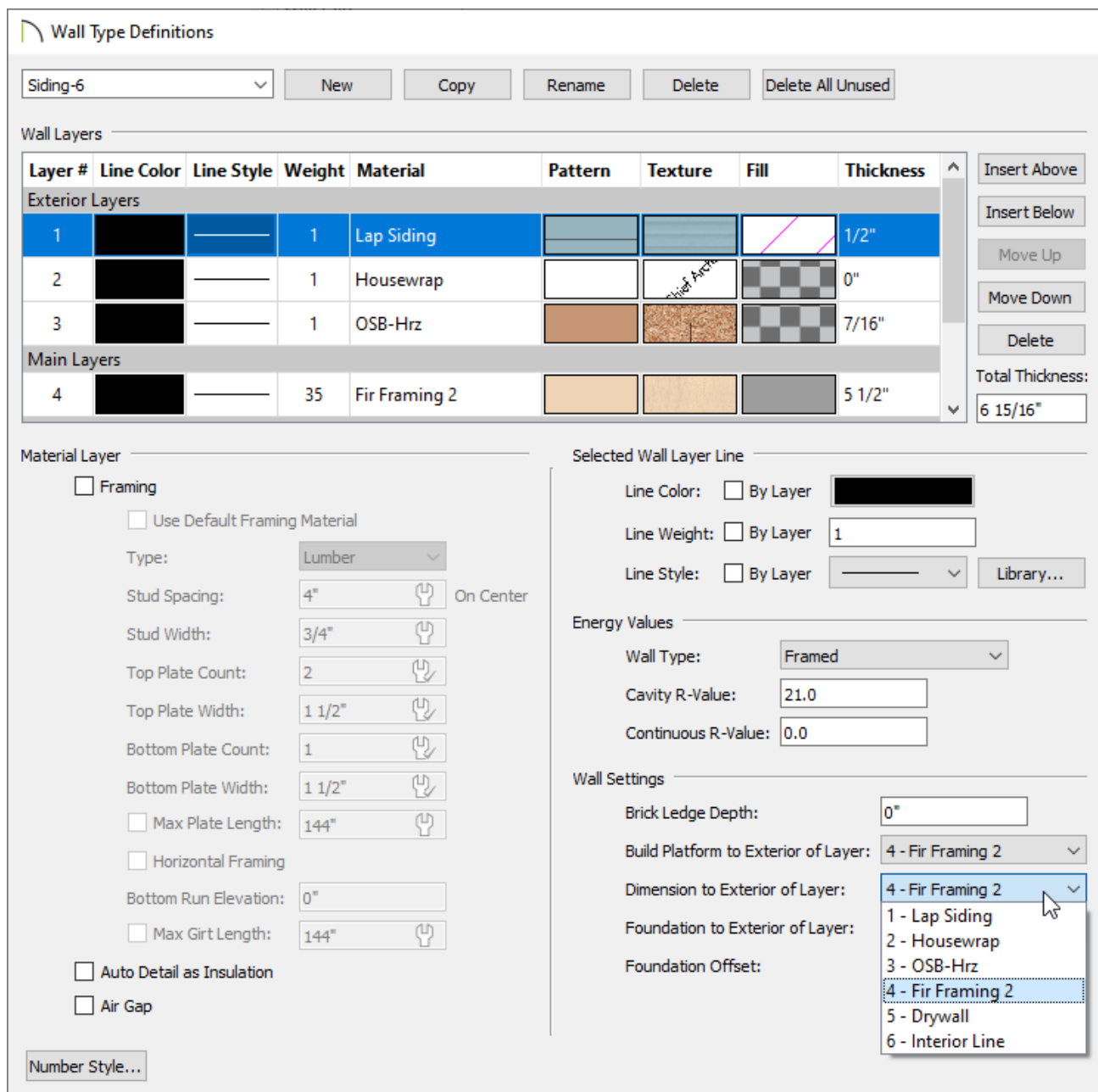
2. Select **Edit> Default Settings**  from the menu and in the **Default Settings** dialog:



- Expand the **Walls** category.
 - Select the **Exterior Wall** option, then click the **Edit** button.
3. On the **WALL TYPES** panel of the **Exterior Wall Defaults** dialog that displays, click the **Define** button to the right of the **Wall Type** drop-down.



4. In the **Wall Type Definitions** dialog that opens, use the drop-down menu next to **Dimension to Exterior of Layer** to select the layer that you want to dimension to, then click **OK**.



5. Back in the **Default Settings** dialog, expand the **Dimension** category, select the **Dimensions** option, then click the **Edit** button.

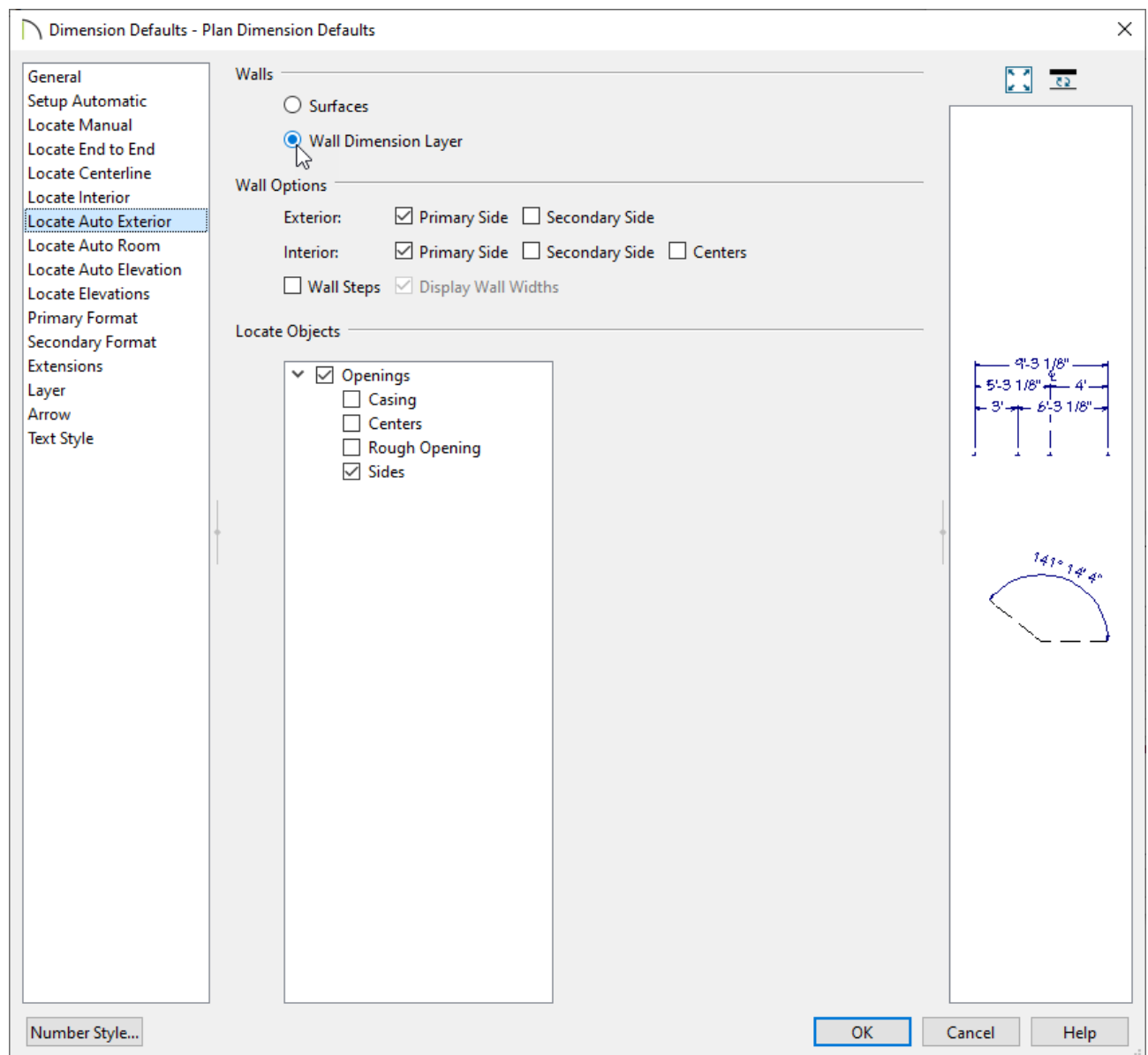
In X12 and prior versions, select the the **Auto Exterior Dimensions** default option, then click **Edit**.

6. In the **Saved Dimension Defaults** dialog that opens, select your desired dimension default, then click **Edit** once again.

This step does not apply to X12 and prior versions.

7. On the **LOCATE AUTO EXTERIOR** panel:

In X12 and prior versions, access the **LOCATE OBJECTS** panel instead.



- Make sure that **Wall Dimension Layer** is selected

- Specify which side of the wall the dimensions will locate under the **Wall Options** section.

The primary side of exterior walls is the exterior side while the primary wall side of interior walls is the interior side.

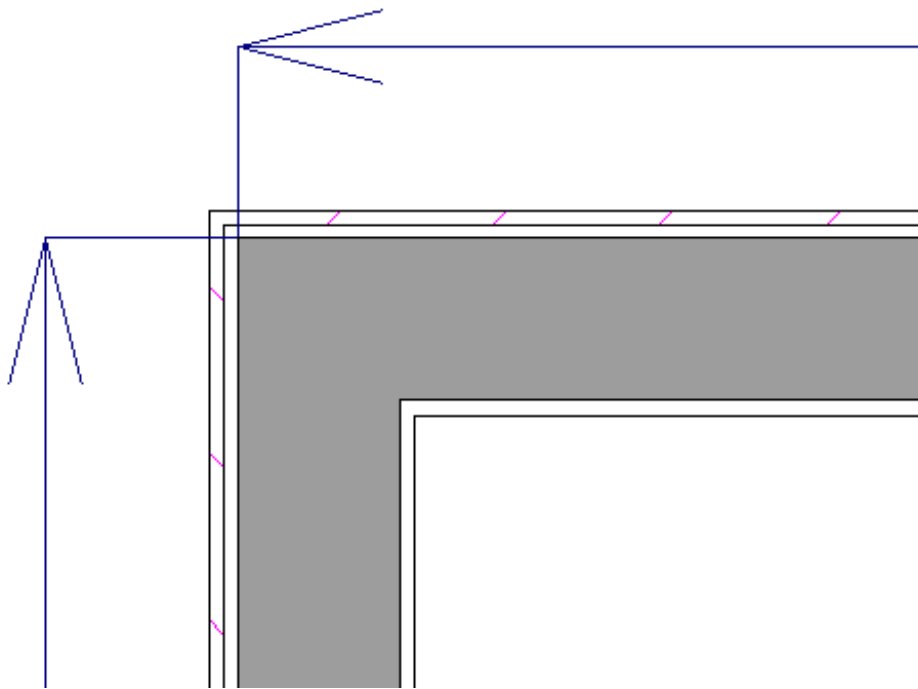
Note: Walls specified as "No Locate" will not be located by some dimension tools, such as the Auto Exterior Dimensions tool. By default, Railings, Deck Railings, and Room Dividers are specified as "No Locate".

- Click **OK** when the dimensions are set up the way you want.

8. Click **Done** to close the **Default Settings** dialog, as well.

9. Select **CAD> Automatic Dimensions> Auto Exterior Dimensions** .

These new dimensions will reflect the changes you made to the exterior wall type, as long as all of your exterior walls are of the same type that you modified in the Wall Type Definitions dialog.



Remember that the settings in the Wall Type Definitions dialog apply to one wall type only. This permits great flexibility in the way you create dimensions, but can also create confusion if you are not mindful of the specifications for other wall types.

Related Articles

📄 [Adjusting Wall Connections \(/support/article/KB-00033/adjusting-wall-connections.html\)](/support/article/KB-00033/adjusting-wall-connections.html)

📄 [Changing an Existing Wall's Type \(/support/article/KB-00443/changing-an-existing-wall-s-type.html\)](/support/article/KB-00443/changing-an-existing-wall-s-type.html)

📄 [Defining a New Wall Type \(/support/article/KB-02944/defining-a-new-wall-type.html\)](/support/article/KB-02944/defining-a-new-wall-type.html)



[\(https://chieftalk.chiefarchitect.com/\)](https://chieftalk.chiefarchitect.com/)

🗨️ [\(/blog/\)](/blog/)



[\(https://www.facebook.com/ChiefArchitect\)](https://www.facebook.com/ChiefArchitect)



[\(https://www.youtube.com/user/ChiefArchitectInc\)](https://www.youtube.com/user/ChiefArchitectInc)



[\(https://www.instagram.com/chiefarchitect/\)](https://www.instagram.com/chiefarchitect/)



[\(https://www.houzz.com/pro/chiefarchitect/\)](https://www.houzz.com/pro/chiefarchitect/)



[\(https://www.pinterest.com/chiefarchitect/\)](https://www.pinterest.com/chiefarchitect/)

[208-292-3400 \(tel:+1-208-292-3400\)](tel:+1-208-292-3400)

© 2000–2022 Chief Architect, Inc.

[Terms of Use \(/company/terms.html\)](/company/terms.html)

[Privacy Policy \(/company/privacy.html\)](/company/privacy.html)