

Creating a Screen Porch

Reference Number: **KB-00747**

Last Modified: **July 11, 2025**

QUESTION



How can I create a screened-in porch in Chief Architect?

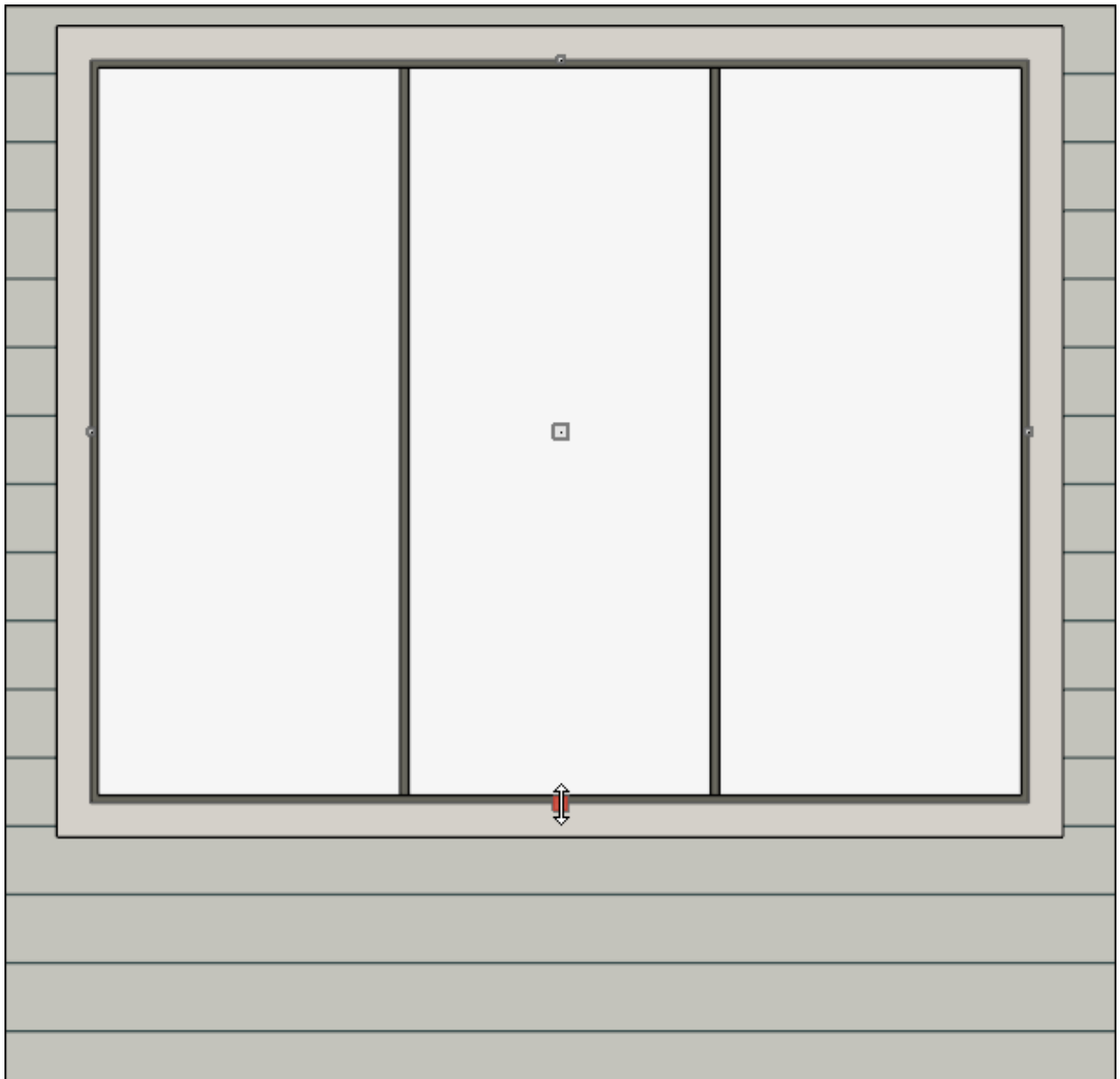




ANSWER

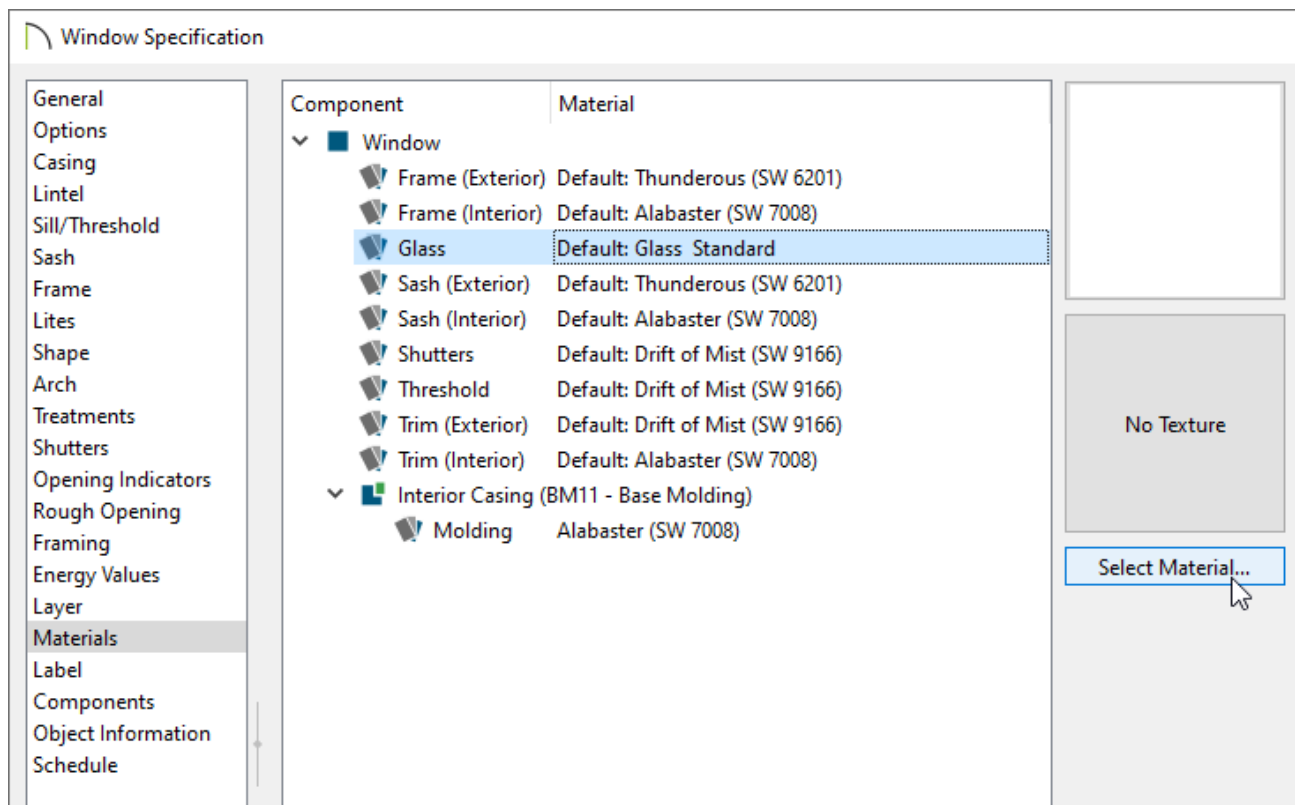
Screened panels can be created by applying a mesh material to the glass in a window and then using copies of this window to form a porch.

To create a screen porch

1. Select **Build> Window> Window**  and place a window into a wall that defines your porch.
2. Select **3D> Create Orthographic View> Cross Section/Elevation**  and take a cross section of the screen porch wall containing the window.
3. In the newly generated view, select your window and using the edit handles:
 - Adjust the top height of the window to match the top of your wall.
 - Adjust the bottom height of the window to the height where you want the bottom of your screen to start.



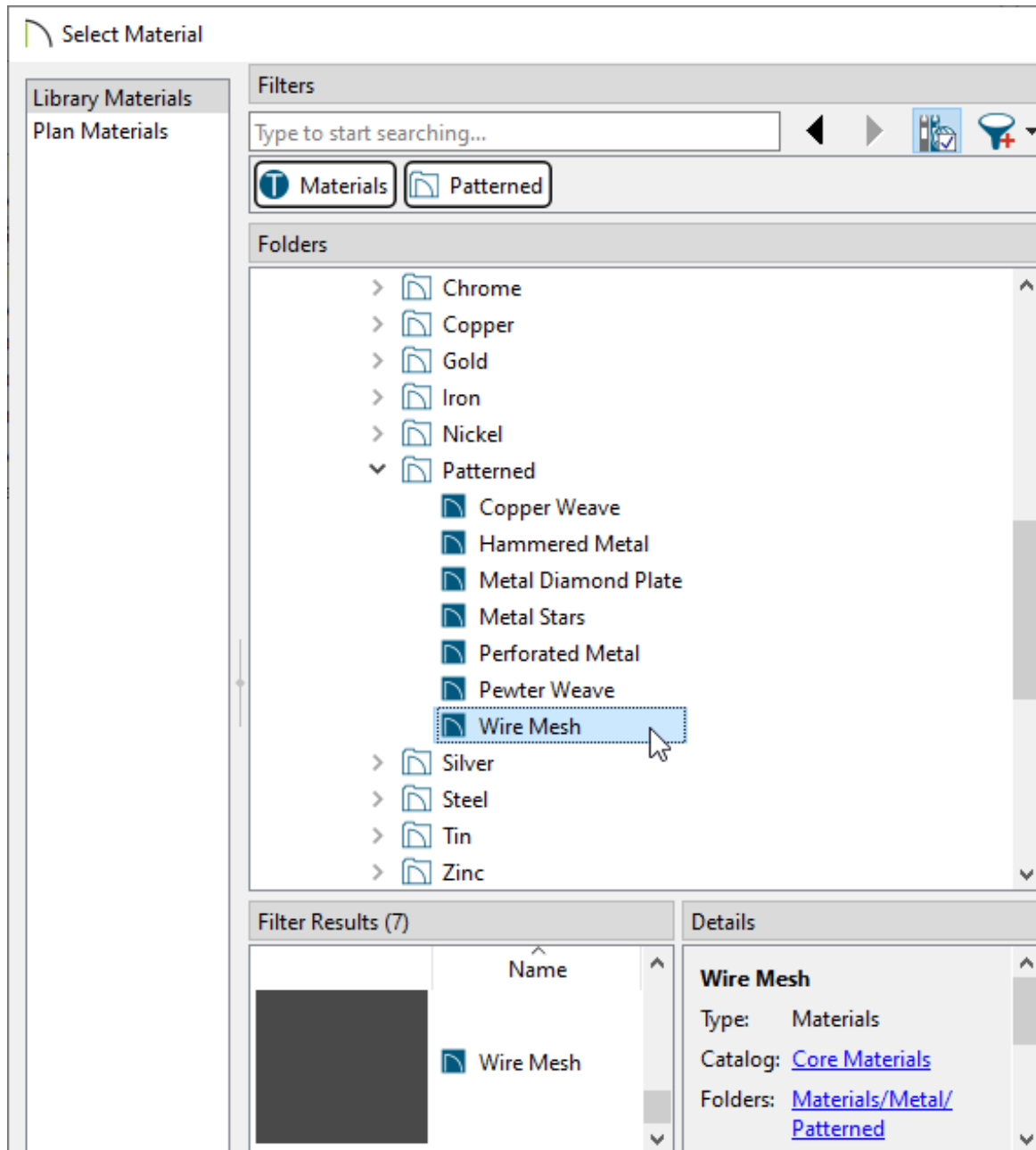
4. Using the **Select Objects**  tool, select the window and click the **Open Object**  edit button.
5. On the **GENERAL** panel of the **Window Specification** dialog that opens, change the Window Type to **Fixed Glass**.
6. Access the **CASING**, **LINTEL**, **SILL/THRESHOLD**, **SASH**, **FRAME**, and **LITES** panels to adjust these various components associated with the window.
7. Select the **MATERIALS** panel, select the **Glass** component, then click on the **Select Material** button.



8. On the **LIBRARY MATERIALS** panel of the **Select Material** dialog that opens, navigate to **Core Catalogs> Materials> Metal> Patterned> Wire Mesh**, select it, then click **OK**.

In X16 and prior versions, navigate to **Chief Architect Core Catalogs> Materials> Fabric & Wall Coverings> Sheers & Shades> Screen> Screen** instead.

Additional mesh materials, such as Square Mesh, can be located in the [Materials Wire and Lattice](https://www.chiefarchitect.com/3d-library/index.php?r=site/detail/961) (<https://www.chiefarchitect.com/3d-library/index.php?r=site/detail/961>) bonus catalog. For more information on obtaining additional catalogs, please see the [Related Articles](#) section below.





9. Make any other adjustments to the window, then click **OK** once more to close the dialog.

You can now create as many copies of this window as needed using the various edit tools.

Additional catalogs can be found in the [3D Library](https://www.chiefarchitect.com/3d-library/index.php?r=site/library&reset=true) (<https://www.chiefarchitect.com/3d-library/index.php?r=site/library&reset=true>) for furnishing your porch room. For more information on obtaining additional catalogs, please see the [Related Articles](#) section below.


Related Articles

 [Creating an Attached Porch or Carport \(/support/article/KB-01179/creating-an-attached-porch-or-carport.html\)](/support/article/KB-01179/creating-an-attached-porch-or-carport.html)

 [Obtaining and Updating Library Content \(/support/article/KB-00090/obtaining-and-updating-library-content.html\)](/support/article/KB-00090/obtaining-and-updating-library-content.html)



[\(https://chieftalk.chiefarchitect.com/\)](https://chieftalk.chiefarchitect.com/)

 [\(/blog/\)](/blog/)



[\(/https://www.facebook.com/ChiefArchitect\)](https://www.facebook.com/ChiefArchitect)



[\(/https://www.youtube.com/user/ChiefArchitectInc\)](https://www.youtube.com/user/ChiefArchitectInc)



[\(/https://www.instagram.com/chiefarchitect/\)](https://www.instagram.com/chiefarchitect/)



[\(/https://www.houzz.com/pro/chiefarchitect/\)](https://www.houzz.com/pro/chiefarchitect/)



[\(/https://www.pinterest.com/chiefarchitect/\)](https://www.pinterest.com/chiefarchitect/)