

# Creating Gas, HVAC, and Plumbing Lines in a Floor Plan

---

Reference Number: **KB-00934**

Last Modified: **March 16, 2022**

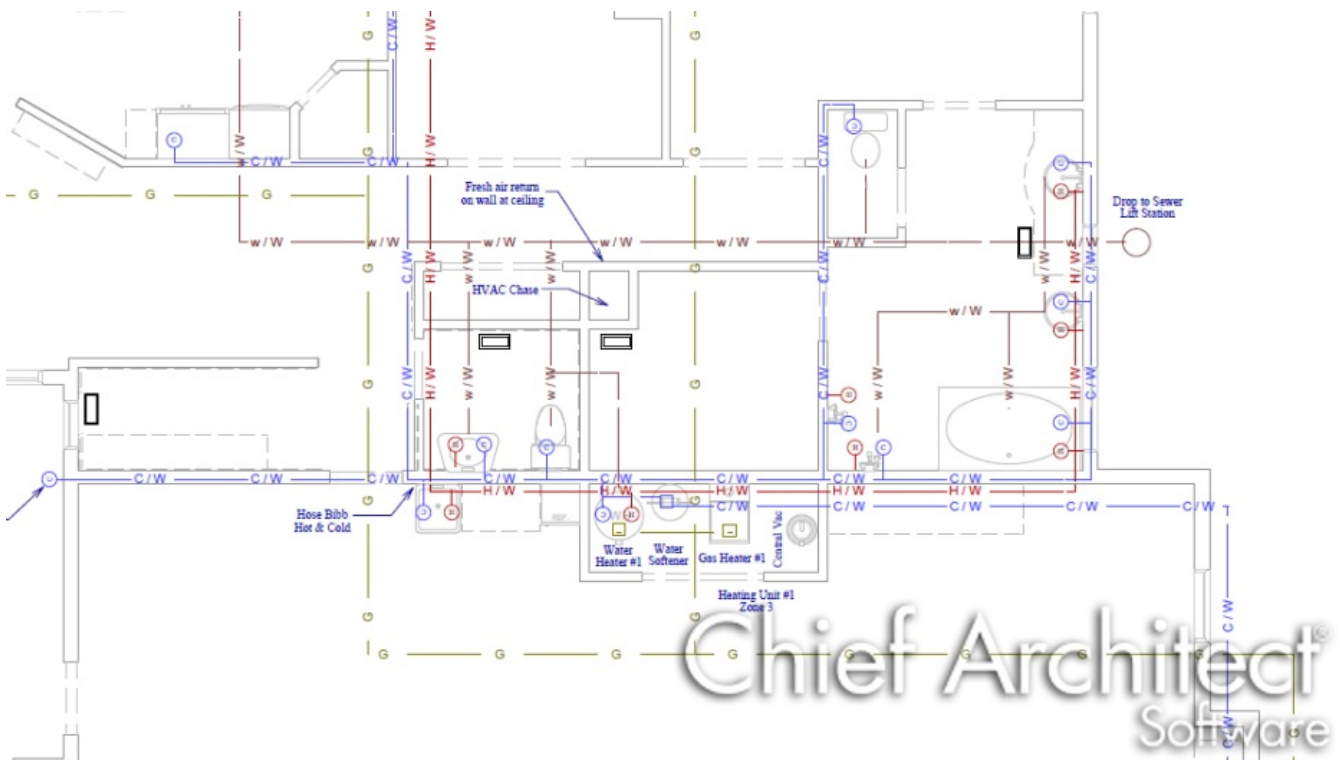
---

The information in this article applies to:



## QUESTION

I would like to show the location and routing of gas lines, HVAC runs, as well as hot water and cold water plumbing lines in my floor plan. How can I do this?



## ANSWER

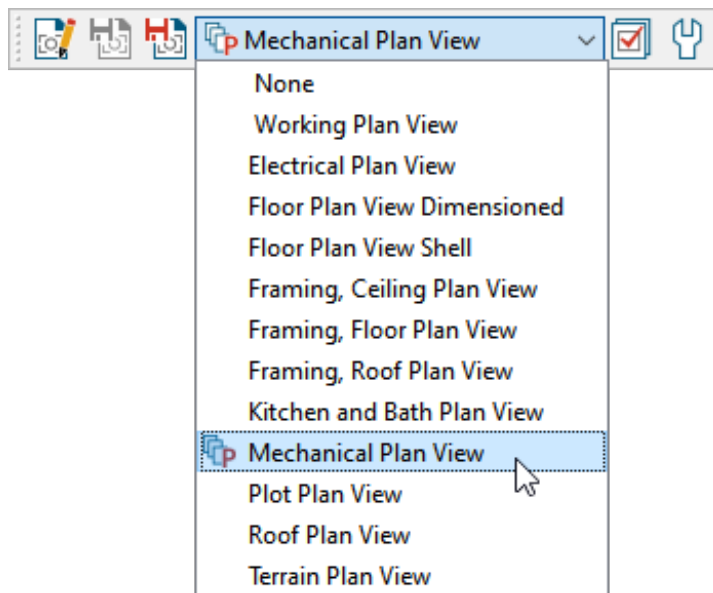
You can use custom layers along with specific line styles to draw gas, HVAC, and plumbing lines in your plans.

To learn how to generate 3D ductwork, as well as how to locate and place 3D HVAC and Plumbing symbols, please see the [Related Articles](#) section below.


## To create new layers

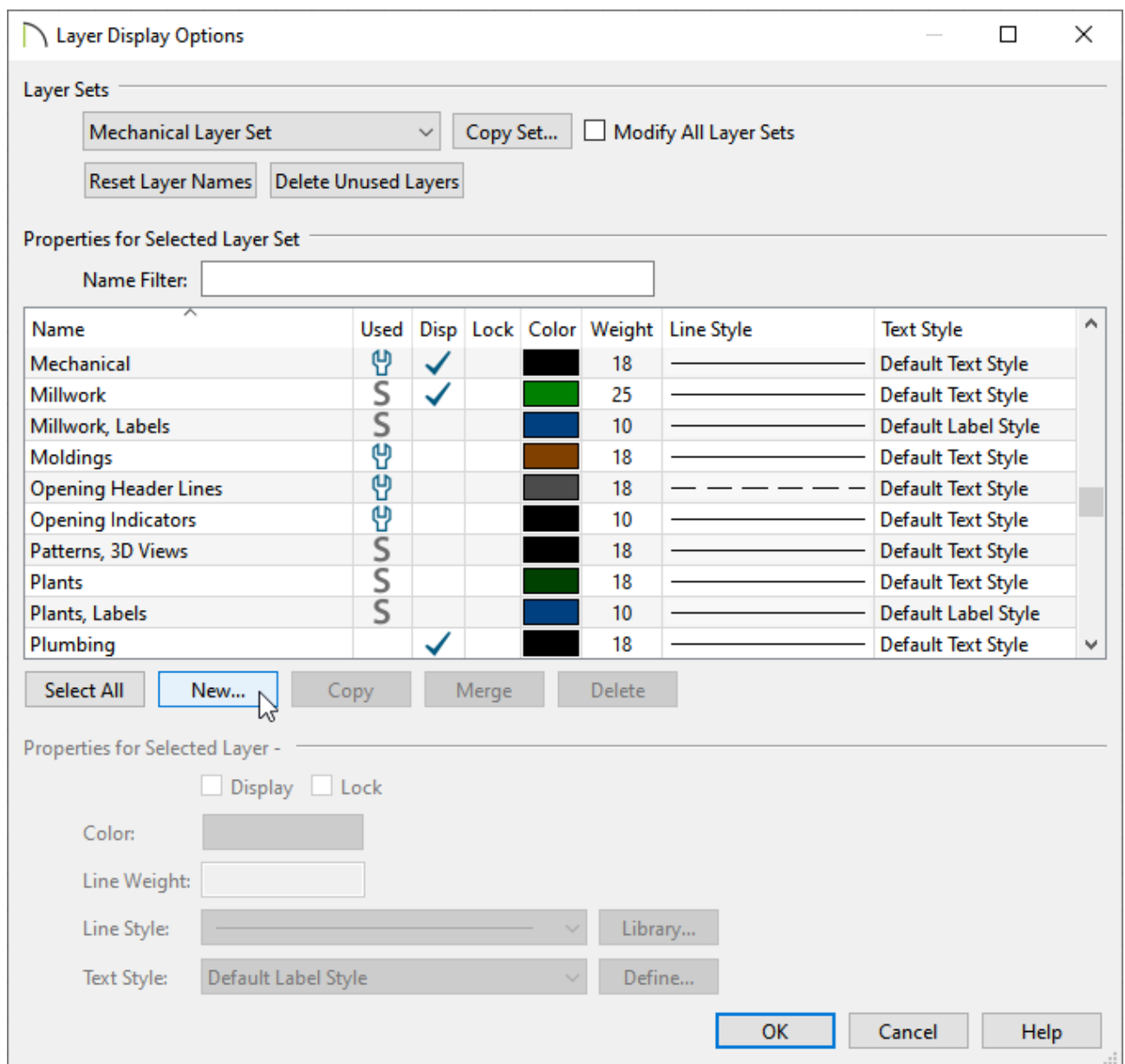
1. Switch to the Plan View that will be used to focus on HVAC and plumbing schematics.

In this example, we will switch to the Mechanical Plan View, which is part of the default plan template in X14. If you're using an X13 or prior template, this was called the HVAC Plan View. Feel free to also create your own Plan View if you wish.

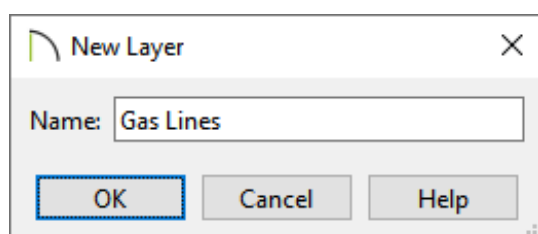


To learn more about Plan Views and how they work in Chief Architect, please watch [Video # 2421 - Saved Plan Views](https://www.chiefarchitect.com/videos/watch/2421/saved-plan-views.html) (<https://www.chiefarchitect.com/videos/watch/2421/saved-plan-views.html>).

2. Select **Tools> Layer Settings> Display Options**  from the menu.
3. In the **Layer Display Options** dialog that opens:



- In the layer table, notice that the following layers already exist: "Mechanical" (or "HVAC" in X13 and prior versions) and "Plumbing". These can be used for HVAC and plumbing lines, but you may want more granular control for all of the various lines that will be created.
- Click the **New** button to create a new layer.
- In the **New Layer** dialog that opens next, type a name for your new layer.



In this example, a layer called "Gas Lines" is created.

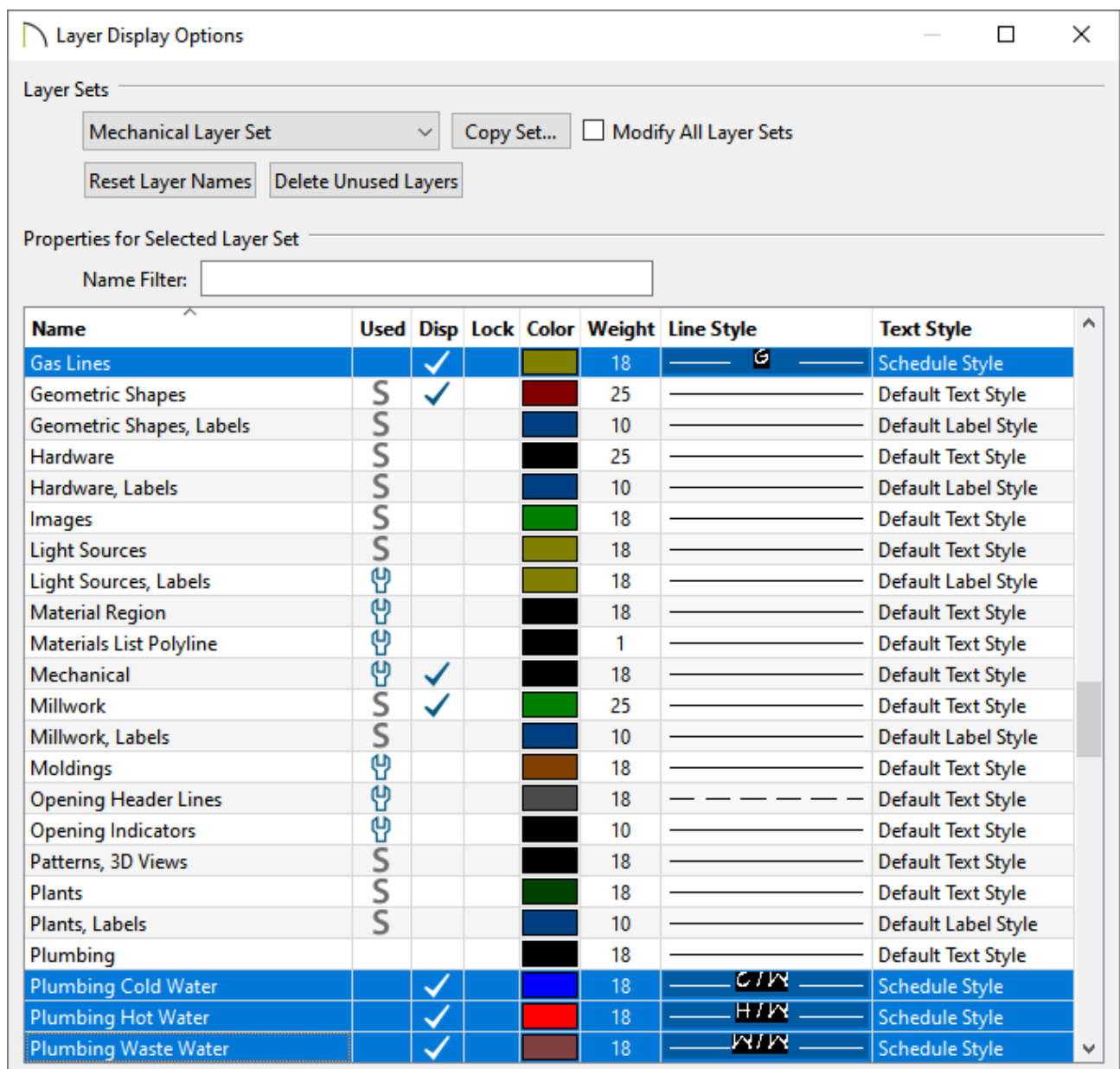
- When you click **OK**, you are returned to the Layer Display Options dialog and the new layer's name is highlighted.
4. Under the Properties for Selected Layer section, click on the **Color** box and select the color you would like to use for the lines of this layer.
  5. Next, use the **Line Style** drop-down to select an appropriate line style from the list or click on the **Library** button to browse the Library for your desired line style.

In this article, all of the line styles that are used are located in the Library by navigating to Chief Architect Core Catalogs> Line Styles.

6. Repeat steps 2-4 for any remaining layers you would like.


In this example, we have created and defined a total of 4 new layers:

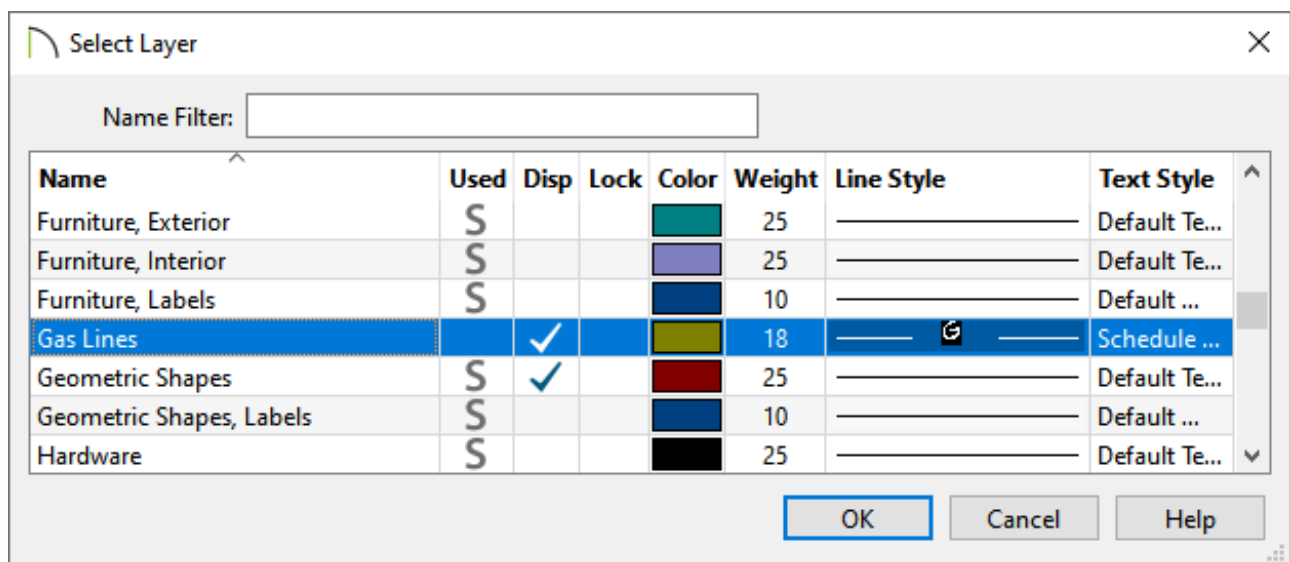
- Gas Lines
- Plumbing Cold Water
- Plumbing Hot Water
- Plumbing Waste Water





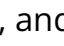


7. Click **OK** once the layers have been defined to your liking.

## To draw gas, HVAC, and plumbing lines

1. Navigate to **CAD> Current CAD Layer**  from the menu.
2. In the **Select Layer** dialog that opens, select a gas, HVAC, or plumbing layer, then click **OK**.




- Now, objects that are drawn using **Lines** , **Arcs** , **Circles** , **Boxes** , **Spline** , and other various CAD tools will be placed onto the selected layer and will display the color and line style set for that layer.
- After all of the objects that you'd like to be on that layer are created, change the Current CAD Layer to another layer of your choice, then repeat Step 3. Perform this procedure until all of the gas, HVAC, and plumbing lines are to your liking.

**Note:** The layer for existing CAD objects can be changed at any time. There are a few ways to do this:

- Use the Layer drop-down located on the Line Style panel of the CAD object's specification dialog.
- Use the Layer Painter tool, which is accessed by navigating to Tools> Layer Settings> Layer Painter.

#### Related Articles

 [Creating a Plumbing, HVAC, or Appliance Schedule \(/support/article/KB-](/support/article/KB-)

[00929/creating-a-plumbing-hvac-or-appliance-schedule.html](#))

📄 [Customizing Toolbars \(/support/article/KB-00811/customizing-toolbars.html\)](#)

📄 [Generating 3D Ductwork \(/support/article/KB-02840/generating-3d-ductwork.html\)](#)

📄 [Setting up a Custom Default/Annotation Set \(/support/article/KB-01167/setting-up-a-custom-default-annotation-set.html\)](#)



[\(https://chieftalk.chiefarchitect.com/\)](https://chieftalk.chiefarchitect.com/)

CA [\(/blog/\)](#)



[\(/https://www.facebook.com/ChiefArchitect\)](https://www.facebook.com/ChiefArchitect)



[\(/https://www.youtube.com/user/ChiefArchitectInc\)](https://www.youtube.com/user/ChiefArchitectInc)



[\(/https://www.instagram.com/chiefarchitect/\)](https://www.instagram.com/chiefarchitect/)



[\(/https://www.houzz.com/pro/chiefarchitect/\)](https://www.houzz.com/pro/chiefarchitect/)



[\(/https://www.pinterest.com/chiefarchitect/\)](https://www.pinterest.com/chiefarchitect/)

[208-292-3400 \(tel:+1-208-292-3400\)](#)

© 2000–2022 Chief Architect, Inc.

[Terms of Use \(/company/terms.html\)](#)

[Privacy Policy \(/company/privacy.html\)](#)