

# Creating HVAC and Plumbing Runs

Reference Number: **KB-00934**

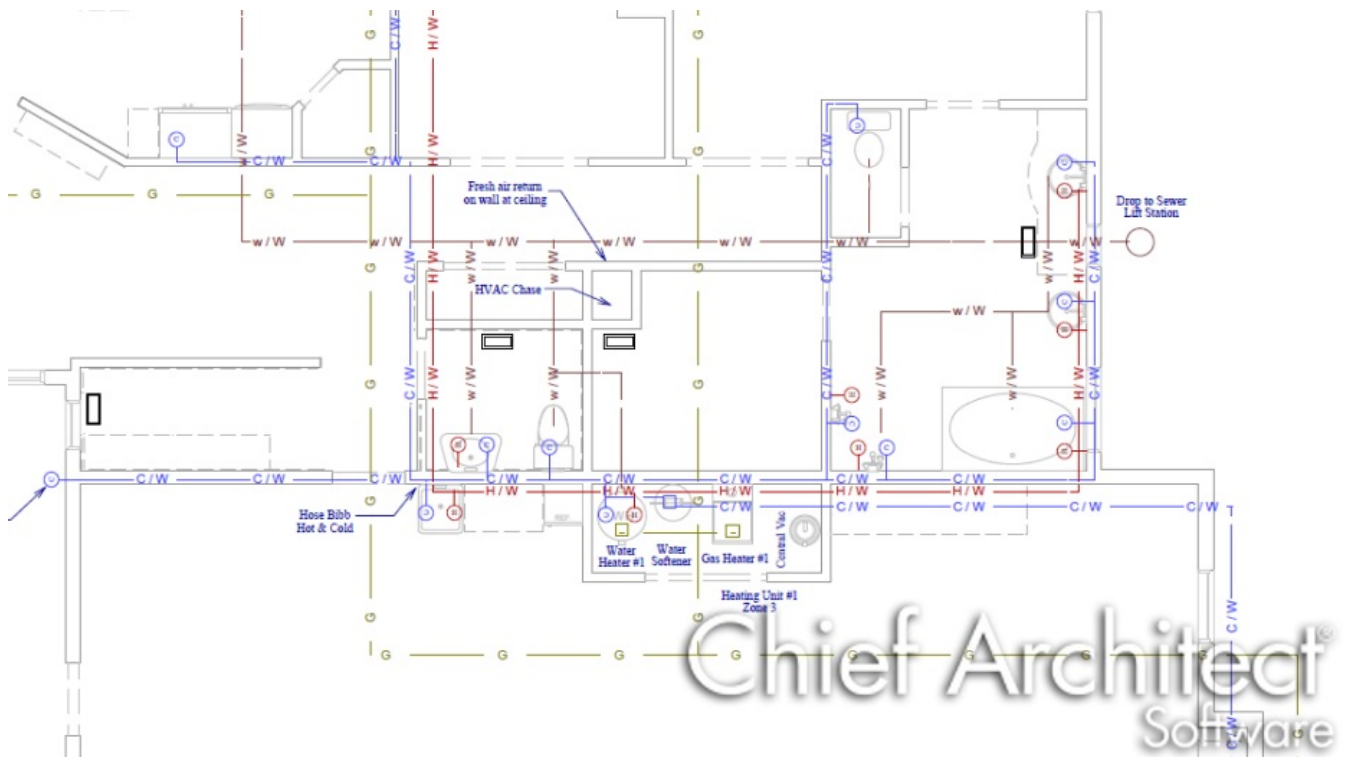
Last Modified: **July 14, 2021**

The information in this article applies to:



## QUESTION

I need to show the location and routing of my Plumbing and HVAC lines in my plan.




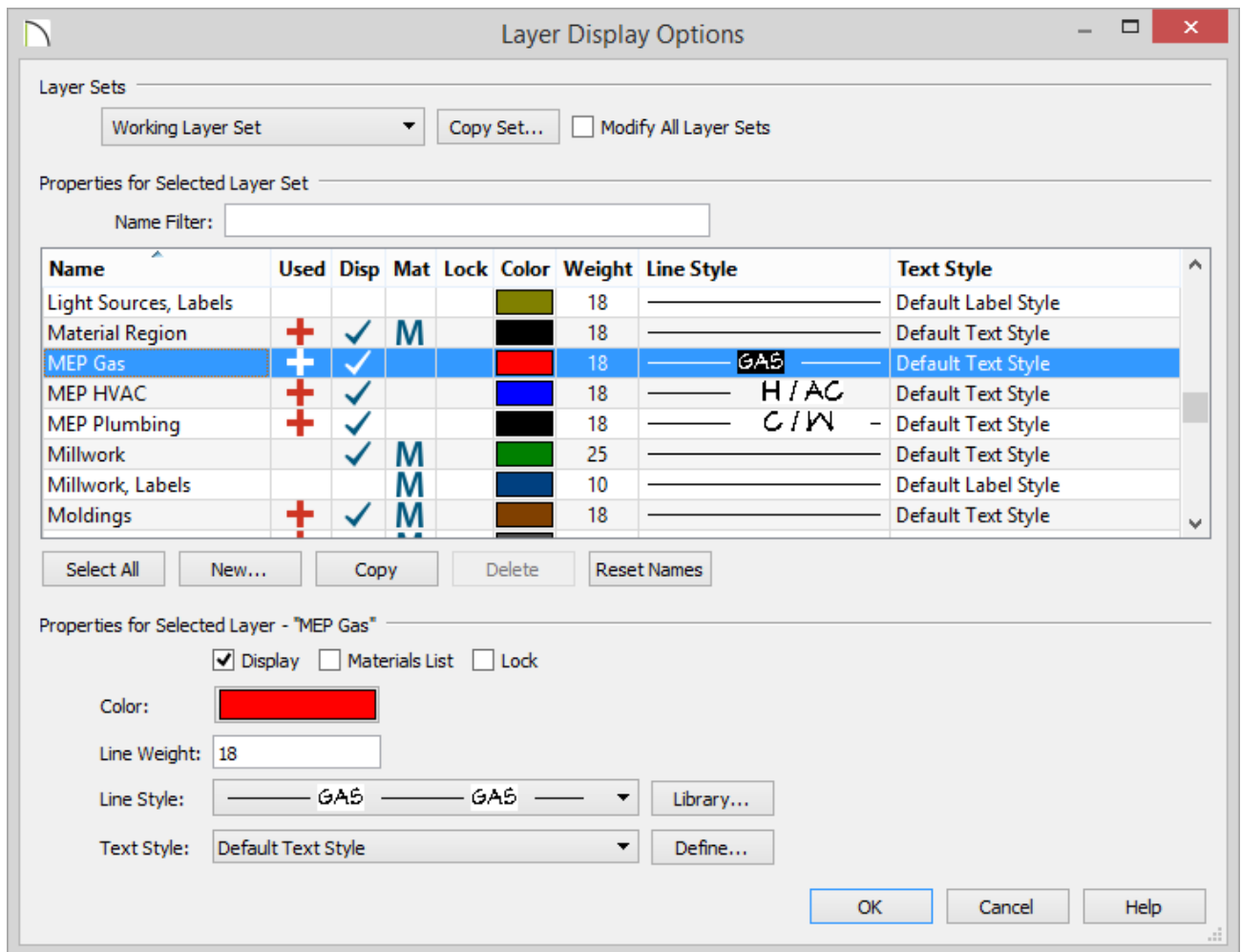
# ANSWER

You can use the special line styles and custom layers in Chief Architect to draw your HVAC and Plumbing plans.

In this example, we have HVAC, Plumbing and Gas lines in the plan, so we will create 3 new layers--"MEP, Plumbing", "MEP, GAS" and "MEP, HVAC".

To create new layers

1. Select **Tools> Layer Settings> Display Options**  to open the **Layer Display Options** dialog.
  - Click the **New** button at the bottom left corner of the dialog.
  - In the **New Layer** dialog, type the name for your new layer.
  - When you click **OK**, you are returned to the Layer Display Options dialog and the new layer's name is highlighted.
2. Under **Properties for Selected Layer**, click on the **Color** box and select the color you want for these lines. Then click on the drop down arrow for the **Line Style** and select the line style you want to use.
3. Repeat this for each of the new layers you create and click **OK** to return to your plan.




To draw gas, HVAC, and plumbing lines


When you are ready to place lines for your HVAC, gas, or plumbing routing, you can place these lines on your custom layers. There are several ways to do this:

- In Chief Architect X12 and newer, the most efficient way for users who routinely need HVAC, plumbing or other mechanical schematics is to create a custom Default Set for each type of drawing and specify the appropriate Current CAD Layer for each.

In X11 and prior Default Sets were called Annotation Sets.

To learn more about setting up a custom Default Sets, refer to the Related Articles section at the bottom of this page.

- Specify one of your new custom layers as the Current CAD Layer, and then use the CAD drawing tools to create lines, arcs, etc. in your plan. These CAD drawing tools will use your custom layer settings and inherit its attributes.
  - Select **CAD> Current CAD Layer**  from the menu.

- Use the CAD Drawing tools to create CAD lines, arcs, polylines and/or splines as needed. Once they are drawn, place them on the desired layer.
  - Specify a selected object's layer on the **LINE STYLE** panel of its specification dialog.
  - Use the **Layer Painter**  tool, select a layer and then click on items to assign them to that layer.

## To draw using multiple line styles


Some drawing tasks require multiple line styles. For example, plumbing layouts typically distinguish between Cold Water, Hot Water and Waste Water lines.

There are a number of ways to achieve this:

- Create custom layers for each of the line styles that you will need, then either place CAD objects on the appropriate layers after they are drawn or change the Current CAD Layer as you work.
- Use the CAD Drawing tools to create CAD lines, arcs, polylines and/or splines as needed. Once they are drawn, change their line style on the **LINE STYLE** panel of their specification dialog.
- Open the Library Browser and expand the Line Styles folder so you can see its contents in the tree list. When you need a particular line style, select it in the Library Browser, move your pointer into the drawing area, then click and drag to draw a CAD line using the selected line style.

---

### Related Articles


 [Creating a Plumbing, HVAC, or Appliance Schedule \(/support/article/KB-00929/creating-a-plumbing-hvac-or-appliance-schedule.html\)](/support/article/KB-00929/creating-a-plumbing-hvac-or-appliance-schedule.html)

 [Customizing Toolbars \(/support/article/KB-00811/customizing-toolbars.html\)](/support/article/KB-00811/customizing-toolbars.html)

 [Setting up a Custom Default/Annotation Set \(/support/article/KB-01167/setting-up-a-custom-default-annotation-set.html\)](/support/article/KB-01167/setting-up-a-custom-default-annotation-set.html)



[\(https://chieftalk.chiefarchitect.com/\)](https://chieftalk.chiefarchitect.com/)

 [\(/blog/\)](/blog/)



<https://www.facebook.com/ChiefArchitect>



<https://www.youtube.com/user/ChiefArchitectInc>



<https://www.instagram.com/chiefarchitectsoftware/>



<https://www.houzz.com/pro/chiefarchitect/>



<https://www.pinterest.com/chiefarchitect/>

[208-292-3400 \(tel:+1-208-292-3400\)](tel:+1-208-292-3400)

© 2000–2021 Chief Architect, Inc.

[Terms of Use \(/company/terms.html\)](/company/terms.html)

[Privacy Policy \(/company/privacy.html\)](/company/privacy.html)