

Message: Unsupported file type for this view. Cannot import the file.

Reference Number: **KB-00962**

Last Modified: **July 19, 2021**

The information in this article applies to:



QUESTION

I keep getting this message when I try to import a file:

"Unsupported file type for this view. Cannot import the file."

Why is this happening?

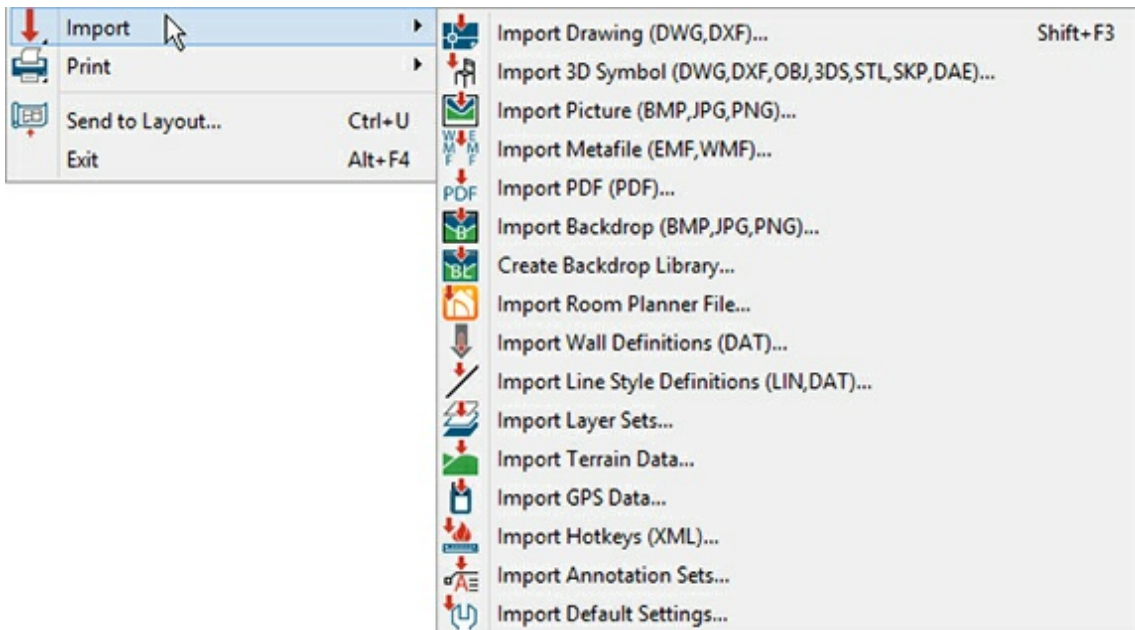
ANSWER

This warning message will display if you try to import a file into Chief Architect by selecting it in Windows Explorer and dragging it into the Chief Architect program window, and the file is not a type that can be imported either into the active view or into the program in general. This message can also appear if you try to import a library (.calib or .calibz) file without having a plan or a layout open. To import library files select Library> import Library when you have a plan or layout open.

To avoid this problem with other file types, select File> Import from the menu to find out what types of files can be imported in the current view. If an Import menu item is active, files of that type can be imported into the current view.

If the menu item is grayed-out and cannot be selected, files of that type cannot be imported into the current view.

For example, if you select **File> Import** ↓, while a camera view is active, only about half of the menu items will be active. If you try to drag a .gpx file containing GPS Data into the camera view, the Warning message will display.



All import options are available in floor plan view, so you should never encounter this warning message when you drag a supported file into Chief Architect when a floor plan view is active.

Bear in mind, though, that some file types cannot be imported into Chief Architect in any view. Text files such as .txt or .doc files are examples of file types that cannot be imported into the program.

In addition, it is also possible for this message to appear when importing a supported file type if the file in question has become corrupted.



[\(https://chieftalk.chiefarchitect.com/\)](https://chieftalk.chiefarchitect.com/)

 [\(/blog/\)](https://chieftalk.chiefarchitect.com/blog/)



[\(https://www.facebook.com/ChiefArchitect\)](https://www.facebook.com/ChiefArchitect)



[\(<https://www.youtube.com/user/ChiefArchitectInc>\)](https://www.youtube.com/user/ChiefArchitectInc)



[\(<https://www.instagram.com/chiefarchitectsoftware/>\)](https://www.instagram.com/chiefarchitectsoftware/)



[\(<https://www.houzz.com/pro/chiefarchitect/>\)](https://www.houzz.com/pro/chiefarchitect/)



[\(<https://www.pinterest.com/chiefarchitect/>\)](https://www.pinterest.com/chiefarchitect/)

[208-292-3400 \(tel:+1-208-292-3400\)](tel:+1-208-292-3400)

© 2000–2021 Chief Architect, Inc.

[Terms of Use \(/company/terms.html\)](/company/terms.html)

[Privacy Policy \(/company/privacy.html\)](/company/privacy.html)