

Limitations of the Chief Architect Trial Software

Reference Number: **KB-00967**

Last Modified: **July 16, 2021**

The information in this article applies to:



QUESTION

I have been looking at the Chief Architect Trial software but have noticed some of tools are limited or I receive a message when I perform a specific action. Is there a problem?

ANSWER

The Chief Architect Premier and Interiors Trial versions are designed to let you explore the software's powerful toolset, but they do have a few restrictions to prevent users from producing files that could be used as professional construction documents or presentation material.

Specifically, the Trial versions do not allow:

- File Saving
- Printing
- File Exporting
- Recording of Walkthroughs
- Printing or Exporting of Materials Lists

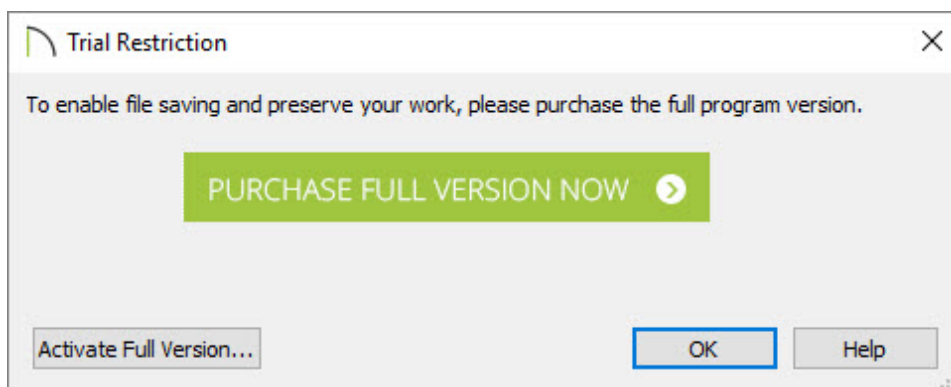
- Use of the Time Tracker utility
- Library Browser Restrictions
- Use of the CAD Detail from View tool
- Creating or saving of Plan Database files
- Exporting of Layer Sets

If you have questions about any of the restricted tools in the Trial version, there are a number of resources available for you to gain more information:

- Select **Help> Launch Help ?** to view the Chief Architect Help menu.
- Select **Help> View Reference Manual** to open the complete Chief Architect Reference Manual in electronic format.
- Contact our [Sales \(https://www.chiefarchitect.com/company/contact.html\)](https://www.chiefarchitect.com/company/contact.html) Department.

To activate the trial version


1. If you try to use a feature that is restricted in the trial version you will be given the option to purchase the full version or activate a full version.
2. Clicking **Purchase Full Version Now** will take you to the Chief Architect website where you will be able to purchase the full version of the software.



3. If you already have a full version product key, you can click the **Activate Full Version** button to activate the trial, converting it to the full version.



[\(https://chieftalk.chiefarchitect.com/\)](https://chieftalk.chiefarchitect.com/)

 (</blog/>)



(<https://www.facebook.com/ChiefArchitect>)



(<https://www.youtube.com/user/ChiefArchitectInc>)



(<https://www.instagram.com/chiefarchitectsoftware/>)



(<https://www.houzz.com/pro/chiefarchitect/>)



(<https://www.pinterest.com/chiefarchitect/>)

[208-292-3400 \(tel:+1-208-292-3400\)](tel:+1-208-292-3400)

© 2000–2021 Chief Architect, Inc.

[Terms of Use \(/company/terms.html\)](/company/terms.html)

[Privacy Policy \(/company/privacy.html\)](/company/privacy.html)