

Limitations of the Chief Architect Trial Version

Reference Number: **KB-00967**

Last Modified: **June 25, 2025**

QUESTION



I have been looking at the Chief Architect Trial but have noticed some of tools are limited, or I receive a message when I perform a specific action. Are there limitations when using the Trial, and if so, what are they?

ANSWER

The Chief Architect Trial version is designed to let you explore the software's powerful toolset, but there are restrictions to prevent users from producing files that could be used as professional construction documents or presentation material. Specifically, the following features and functions are *not* available:

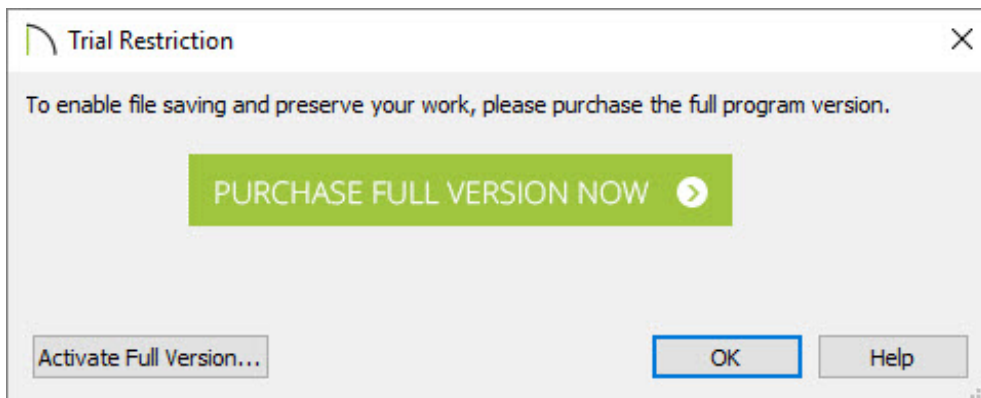
- Saving
- Printing
- Exporting
- Recording of Walkthroughs
- Use of the Time Tracker utility
- Library Browser restrictions
- Linked Callouts
- Linked Plans in the Reference Display
- Use of the CAD Detail from View tool
- Creating or saving of Plan Database files

If you have questions about any of the restricted tools or functions in the Trial version, there are a number of resources available for you to gain more information:

- Select **Help> Launch Help**  to view the Chief Architect Help content.
- Select **Help> View Reference Manual**  to open the complete Chief Architect Reference Manual in digital format.
- [Contact our Sales team \(https://www.chiefarchitect.com/company/contact.html\)](https://www.chiefarchitect.com/company/contact.html).

TRIAL RESTRICTION DIALOG

If you try to use a feature that is unavailable in the trial version, a **Trial Restriction** dialog will appear. Clicking **PURCHASE FULL VERSION NOW** will take you to the Chief Architect website where you will be able to purchase the full version of the software. If you already have a full version product key, you can click the **Activate Full Version** button to activate the trial, converting it to the full version.



Related Articles

- 📖 [Converting a Trial Version into a Full Version \(/support/article/KB-02849/converting-a-trial-version-into-a-full-version.html\)](https://support/article/KB-02849/converting-a-trial-version-into-a-full-version.html)
- 📖 [Finding your Chief Architect Product Key \(/support/article/KB-01034/finding-your-chief-architect-product-key.html\)](https://support/article/KB-01034/finding-your-chief-architect-product-key.html)
- 📖 [Upgrading to the Latest Version of Chief Architect \(/support/article/KB-01974/upgrading-to-the-latest-version-of-chief-architect.html\)](https://support/article/KB-01974/upgrading-to-the-latest-version-of-chief-architect.html)



[\(https://chieftalk.chiefarchitect.com/\)](https://chieftalk.chiefarchitect.com/)

 (/blog/)



(<https://www.facebook.com/ChiefArchitect>)



(<https://www.youtube.com/user/ChiefArchitectInc>)



(<https://www.instagram.com/chiefarchitect/>)



(<https://www.houzz.com/pro/chiefarchitect/>)



(<https://www.pinterest.com/chiefarchitect/>)

[208-292-3400 \(tel:+1-208-292-3400\)](tel:208-292-3400)

© 2000–2025 Chief Architect, Inc.

[Terms of Use \(/company/terms.html\)](/company/terms.html)

[Privacy Policy \(/company/privacy.html\)](/company/privacy.html)