

Managing and Creating Line Styles

Reference Number: **KB-01019**

Last Modified: **July 16, 2021**

The information in this article applies to:



QUESTION


I need to manage or create a particular line style in my drawing. How can I do this?

ANSWER

The Line Style Specification dialog allows you to create new line styles for use in Chief Architect. Additionally, line styles can be managed in the Line Style Management dialog.

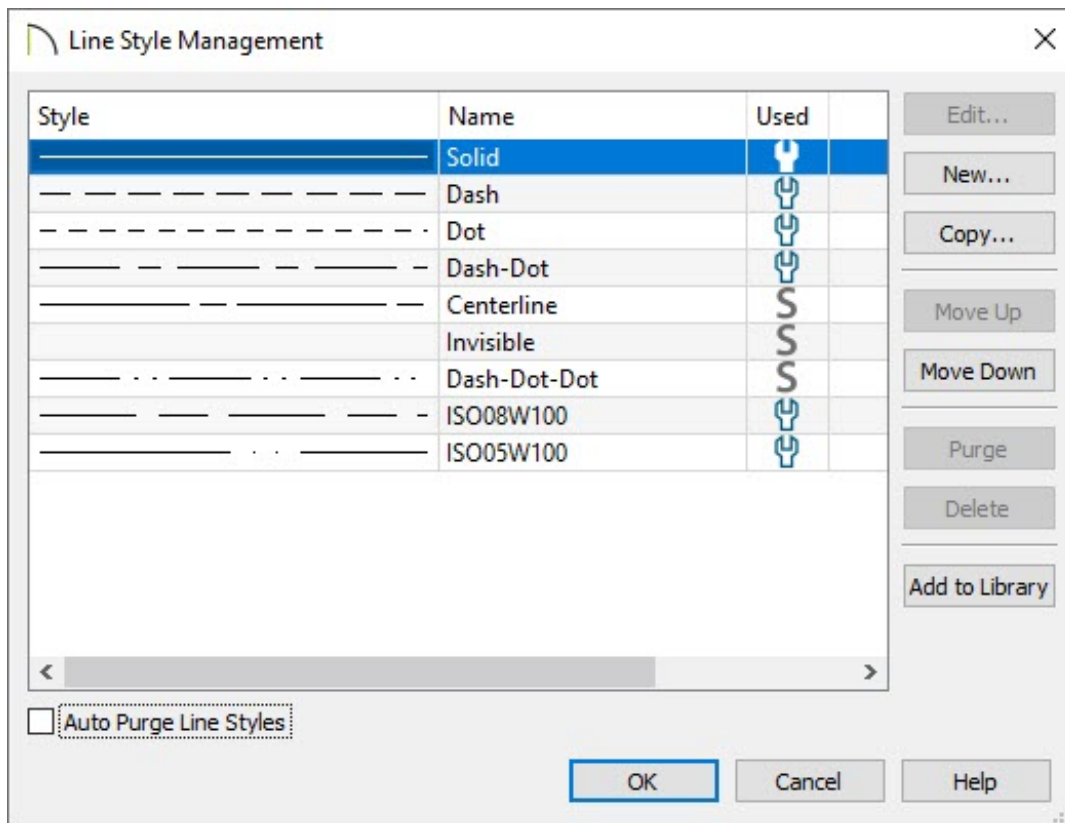
Note: The attributes of custom line styles created in Chief Architect are not retained in drawings exported to .dxf / .dwg.

Managing line styles

Line styles can easily be created, deleted, and added to the library from the **Line Style Management**  dialog.



1. Select **CAD> Lines> Line Style Management**  from the menu.

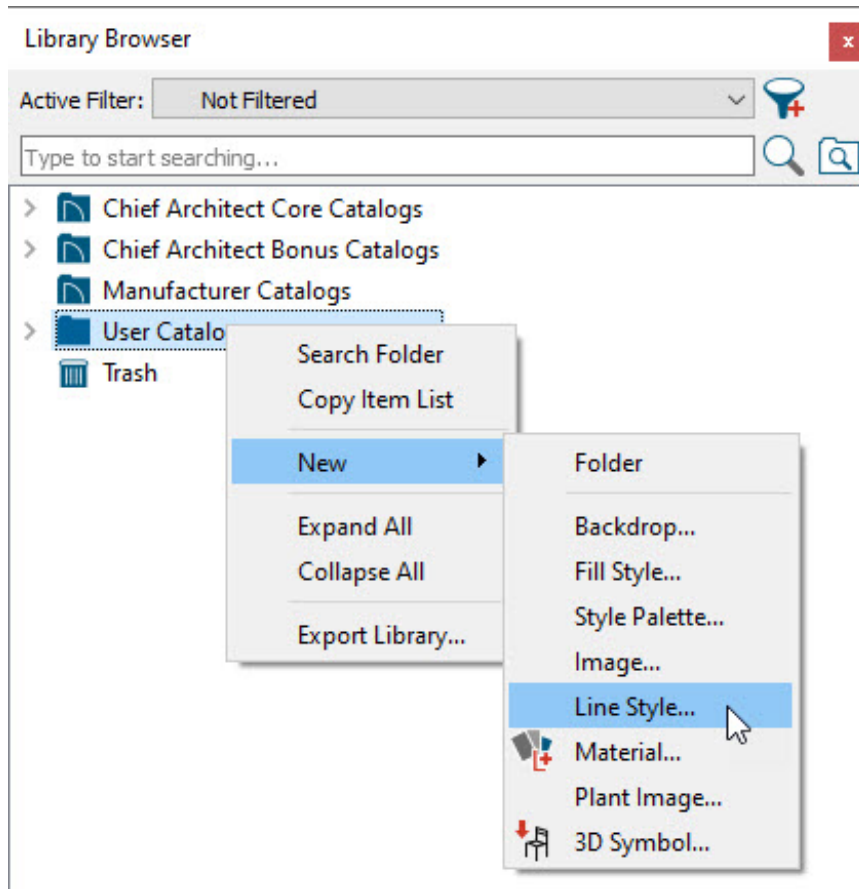
2. In the **Line Style Management** dialog:



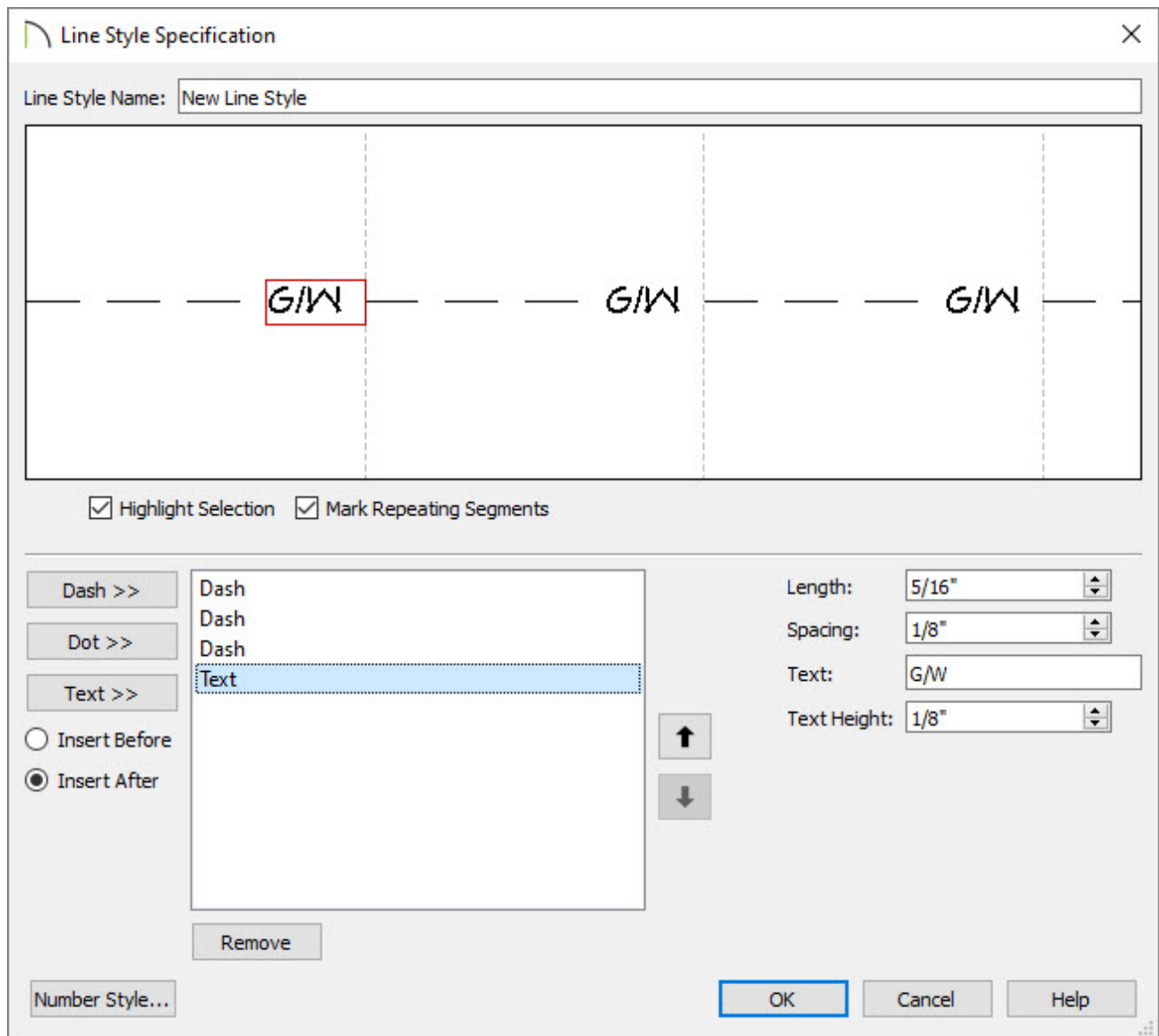
- Click on **Edit** if you would like to modify the line style you have selected.
- Click on **New** to bring up a dialog to create a line style.
- Use the **Copy** button to make a duplicate of the line style you have selected.
- The **Move Up** and **Move Down** buttons will move the selected line style up or down one position in the list.
- **Purge** will delete any unused line styles in the current plan file.
- **Delete** will remove the selected line style from the list.
- Click **Add to Library** to add the selected line style to the User Catalog to be used in future plans.

To create a custom line style

1. Select **CAD> Lines> Line Style Management**  then click on **New** as mentioned in the section above, or right-click on the User Catalog folder located in the **Library Browser**  and select **New> Line Style**.



- You can also edit an existing line style by choosing to **Copy** it to the User Catalog, then right-clicking on it and selecting **Open Object** from the contextual menu.
2. In the **Line Style Specification** dialog, type a short, descriptive **Line Style Name** for the line style. In this example, "Grey Water (large)" is used.
 3. Next, insert a line style component: a **Dash**, **Dot**, or **Text** item. In this example, a total of four components are used: three Dash components and one Text component.
 4. With each component created, the characteristics of each can now be adjusted. To select a component, click on it in the line style preview diagram or in the list of components located to the right of the Insert options.



- The three Dash components in this example each have **Length** and **Spacing** values of 1/8".
 - The Text component has a **Length** of 5/16", which is based on its **Text** information. Its **Spacing** is 1/8", and its **Text Height** is 1/8". Its **Text** reads "G/W".
5. When you are satisfied with the appearance of the line style in the preview diagram, click **OK** to close the dialog and apply your changes.
- You can make changes to this line style's attributes at any time by right-clicking on its name and selecting **Open Object** from the contextual menu.

Note: Changes to existing line styles will not affect any objects currently using that line style; only subsequently drawn objects.

6. There are several ways to use your new custom line style:

— G/W — — — G/W — — — G/W —

- Click on the line style in the library, move your mouse pointer into the drawing area, and then click and drag to draw a CAD line.
- Assign the line style to any object on the **LINE STYLE** panel of the object's specification dialog.
- Assign the new line style to the Current CAD Layer and all CAD objects will be drawn using that line style.

When a line style with text is used in a drawing, its font, style, and transparency will be determined by the Text Style assigned to the layer that the object using that line style is on.

Related Articles

📌 [Adding and Copying Objects to the User Catalog \(/support/article/KB-03015/adding-and-copying-objects-to-the-user-catalog.html\)](/support/article/KB-03015/adding-and-copying-objects-to-the-user-catalog.html)

📌 [Changing the Way Objects Look in Floor Plan View \(/support/article/KB-00473/changing-the-way-objects-look-in-floor-plan-view.html\)](/support/article/KB-00473/changing-the-way-objects-look-in-floor-plan-view.html)

📌 [Creating and Using a Custom Text Style \(/support/article/KB-01325/creating-and-using-a-custom-text-style.html\)](/support/article/KB-01325/creating-and-using-a-custom-text-style.html)

📌 [Creating Gas, HVAC, and Plumbing Lines in a Floor Plan \(/support/article/KB-00934/creating-gas-hvac-and-plumbing-lines-in-a-floor-plan.html\)](/support/article/KB-00934/creating-gas-hvac-and-plumbing-lines-in-a-floor-plan.html)

📌 [Grey Water Reclamation Systems \(/support/article/KB-01087/grey-water-reclamation-systems.html\)](/support/article/KB-01087/grey-water-reclamation-systems.html)



(<https://chieftalk.chiefarchitect.com/>)

 (/blog/)



(<https://www.facebook.com/ChiefArchitect>)



(<https://www.youtube.com/user/ChiefArchitectInc>)



(<https://www.instagram.com/chiefarchitect/>)



(<https://www.houzz.com/pro/chiefarchitect/>)



(<https://www.pinterest.com/chiefarchitect/>)

[208-292-3400 \(tel:+1-208-292-3400\)](tel:208-292-3400)

© 2000–2024 Chief Architect, Inc.

[Terms of Use \(/company/terms.html\)](/company/terms.html)

[Privacy Policy \(/company/privacy.html\)](/company/privacy.html)