

# Controlling the Display Size of Temporary Dimensions in Plan, or Rich Text in the Specification Dialog

---

Reference Number: **KB-01110**

Last Modified: **September 12, 2025**

---



## QUESTION

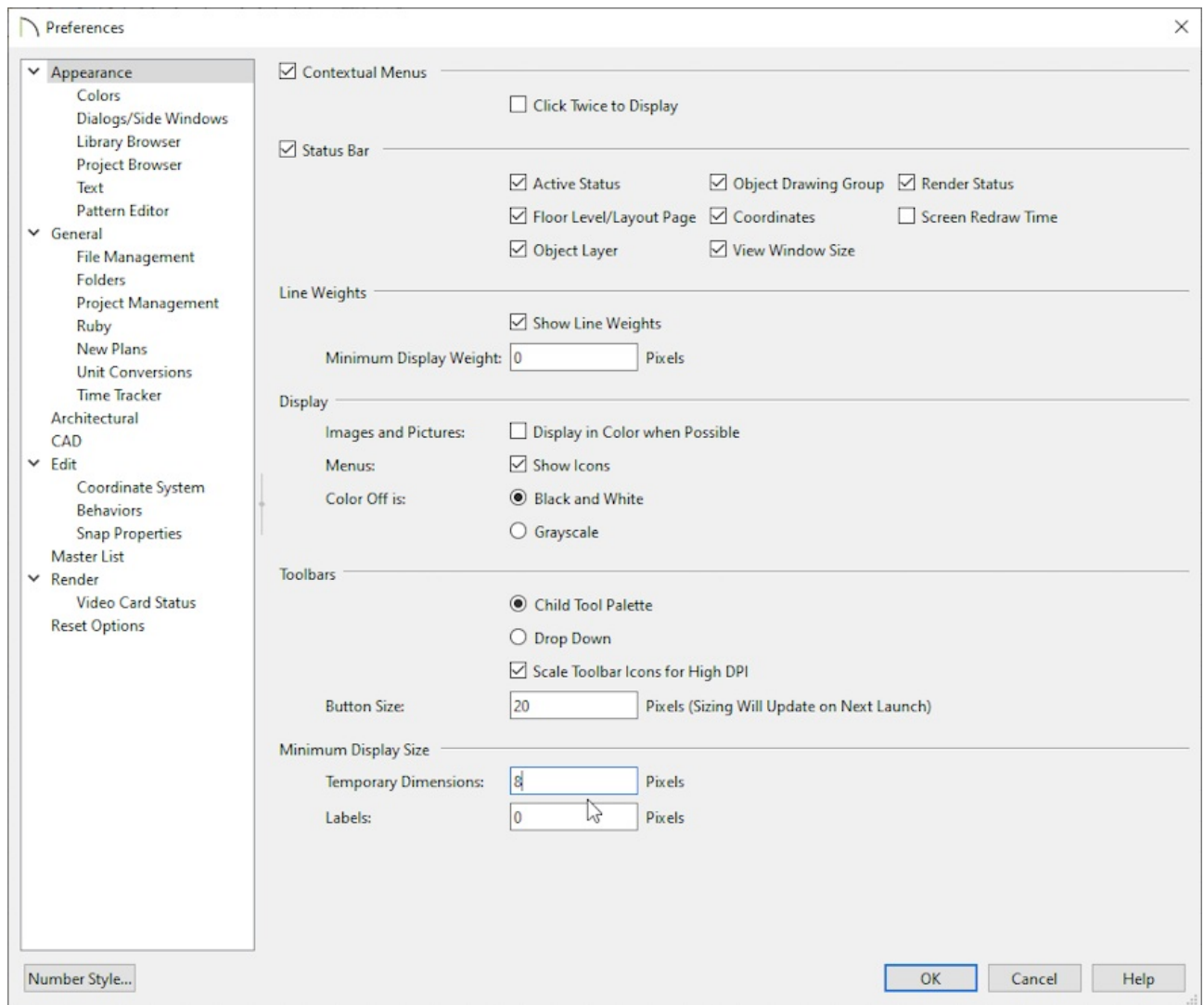
The display of temporary dimensions on my screen is too small when I am zoomed out. How can I make their display bigger so that they are easier to read, without affecting the size they will be when printed?

## ANSWER

The on-screen size of temporary dimensions and object labels can both be specified in the Preferences dialog on the Appearance panel.

### To change the display size of dimensions

1. Select **Edit> Preferences**  if you're on a Windows PC or **Chief Architect> Preferences**  if you are on a Mac.
2. On the **APPEARANCE** panel, under the Minimum Display Size section, specify the number of **Pixels** for **Temporary Dimensions**.



This is the on-screen size and does not affect printed or exported output. To use the printed scale, set these values to 0 or turn on Print Preview.

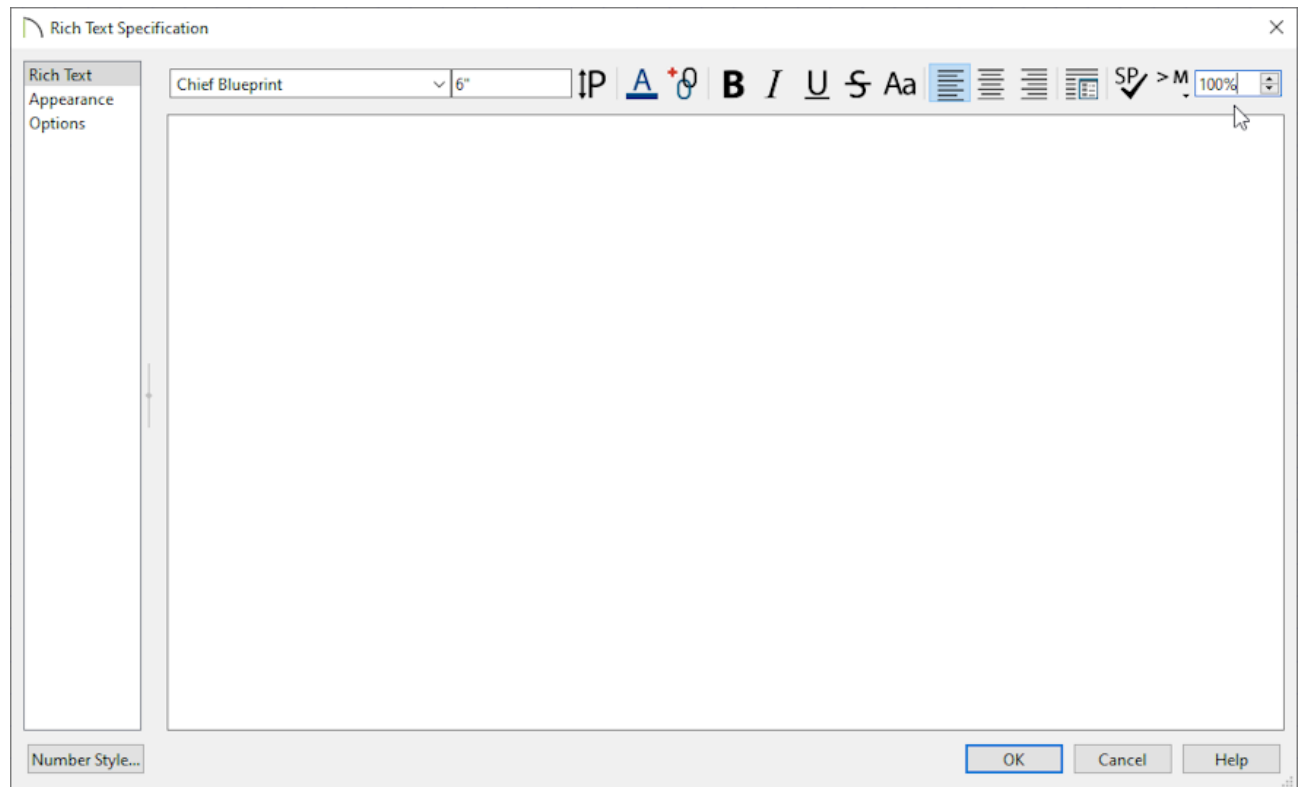
Printed dimension and label sizes are set by modifying the text styles used by those dimensions or labels.

3. Click **OK** to apply this change.

## To change the display size of Text in the Rich Text Specification

1. Create or Select and open the **Rich Text** we are working with.
2. On the RICH TEXT panel, at the top right, change the Zoom percentage to adjust the

**Rich Text** display size below.



**Note:** This will not edit the size of the text on your plan/layout file. For information on controlling the size of your text on plan/layout please see the [Related Articles](#) section below.


---

#### Related Articles

- 📄 [Adjusting the Font Size of Text \(/support/article/KB-00183/adjusting-the-font-size-of-text.html\)](/support/article/KB-00183/adjusting-the-font-size-of-text.html)
- 📄 [Changing What Dimensions Locate \(/support/article/KB-00941/changing-what-dimensions-locate.html\)](/support/article/KB-00941/changing-what-dimensions-locate.html)
- 📄 [Creating and Using a Custom Text Style \(/support/article/KB-01325/creating-and-using-a-custom-text-style.html\)](/support/article/KB-01325/creating-and-using-a-custom-text-style.html)
- 📄 [Modifying the Text Styles of Labels \(/support/article/KB-00011/modifying-the-text-styles-of-labels.html\)](/support/article/KB-00011/modifying-the-text-styles-of-labels.html)



[\(https://chieftalk.chiefarchitect.com/\)](https://chieftalk.chiefarchitect.com/)

 [\(/blog/\)](/blog/)



[\(https://www.facebook.com/ChiefArchitect\)](https://www.facebook.com/ChiefArchitect)



[\(https://www.youtube.com/user/ChiefArchitectInc\)](https://www.youtube.com/user/ChiefArchitectInc)



[\(https://www.instagram.com/chiefarchitect/\)](https://www.instagram.com/chiefarchitect/)



[\(https://www.houzz.com/pro/chiefarchitect/\)](https://www.houzz.com/pro/chiefarchitect/)



[\(https://www.pinterest.com/chiefarchitect/\)](https://www.pinterest.com/chiefarchitect/)

[208-292-3400 \(tel:+1-208-292-3400\)](tel:+1-208-292-3400)

© 2000–2025 Chief Architect, Inc.

[Terms of Use \(/company/terms.html\)](/company/terms.html)

[Privacy Policy \(/company/privacy.html\)](/company/privacy.html)