

# Controlling the Minimum Display Size of Temporary Dimensions and Labels

---

Reference Number: **KB-01110**

Last Modified: **September 25, 2025**

---



## QUESTION

The display of temporary dimensions on my screen is too small when I am zoomed out. How can I make their display bigger so that they are easier to read without affecting the size they will be when printed?

## ANSWER

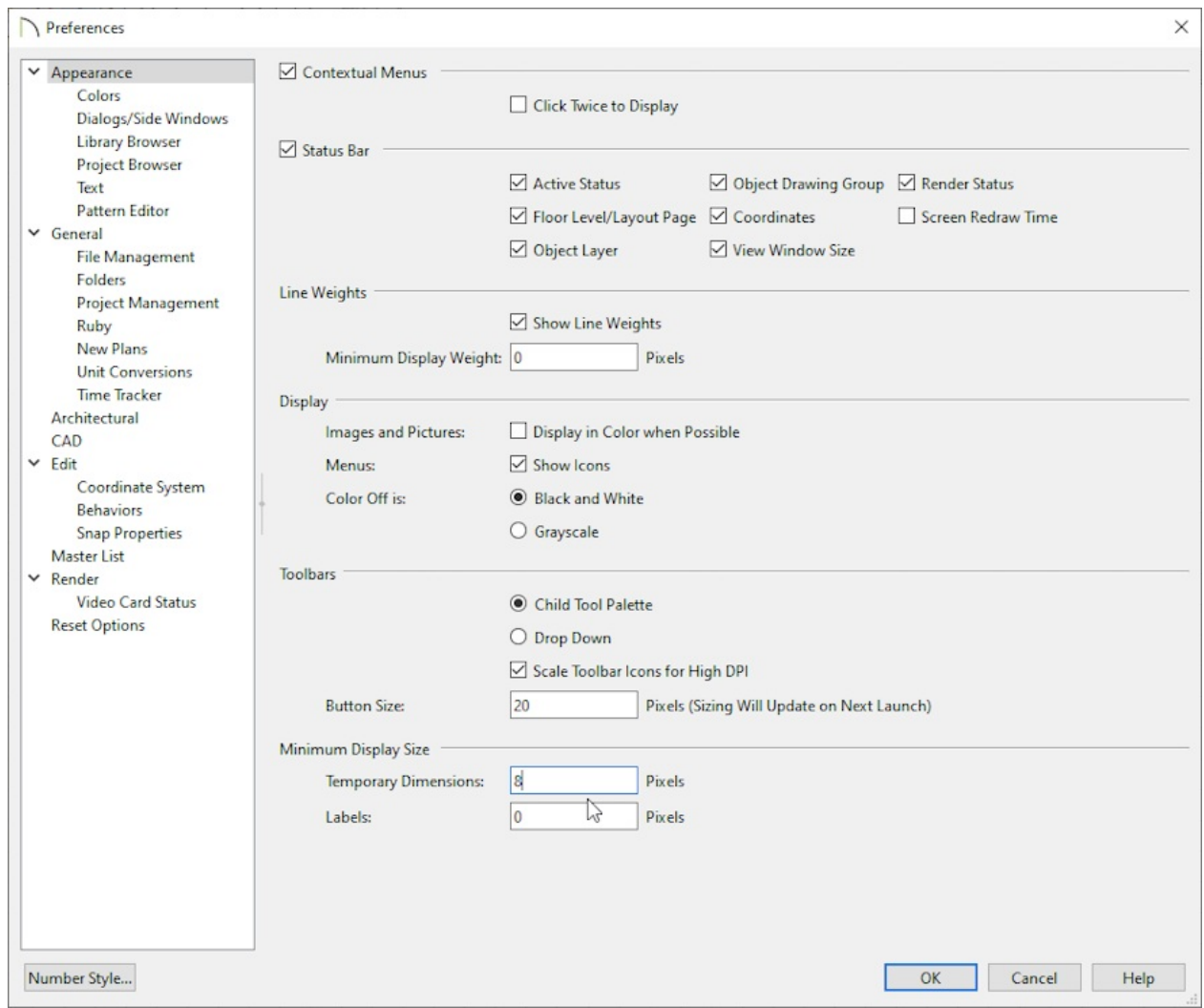
The on-screen size of temporary dimensions and object labels can both be specified in the Preferences dialog on the Appearance panel.

To change the minimum display size of temporary dimensions

1. Select **Edit> Preferences**  if you're on a Windows PC or **Chief Architect> Preferences**  if you are on a Mac.
2. On the **APPEARANCE** panel, under the Minimum Display Size section, specify the number of **Pixels** for **Temporary Dimensions**.



This is the on-screen size and does not affect printed or exported output. To use the printed scale, set these values to 0 or turn on Print Preview.

Printed dimension and label sizes are set by modifying the text styles used by those dimensions or labels.

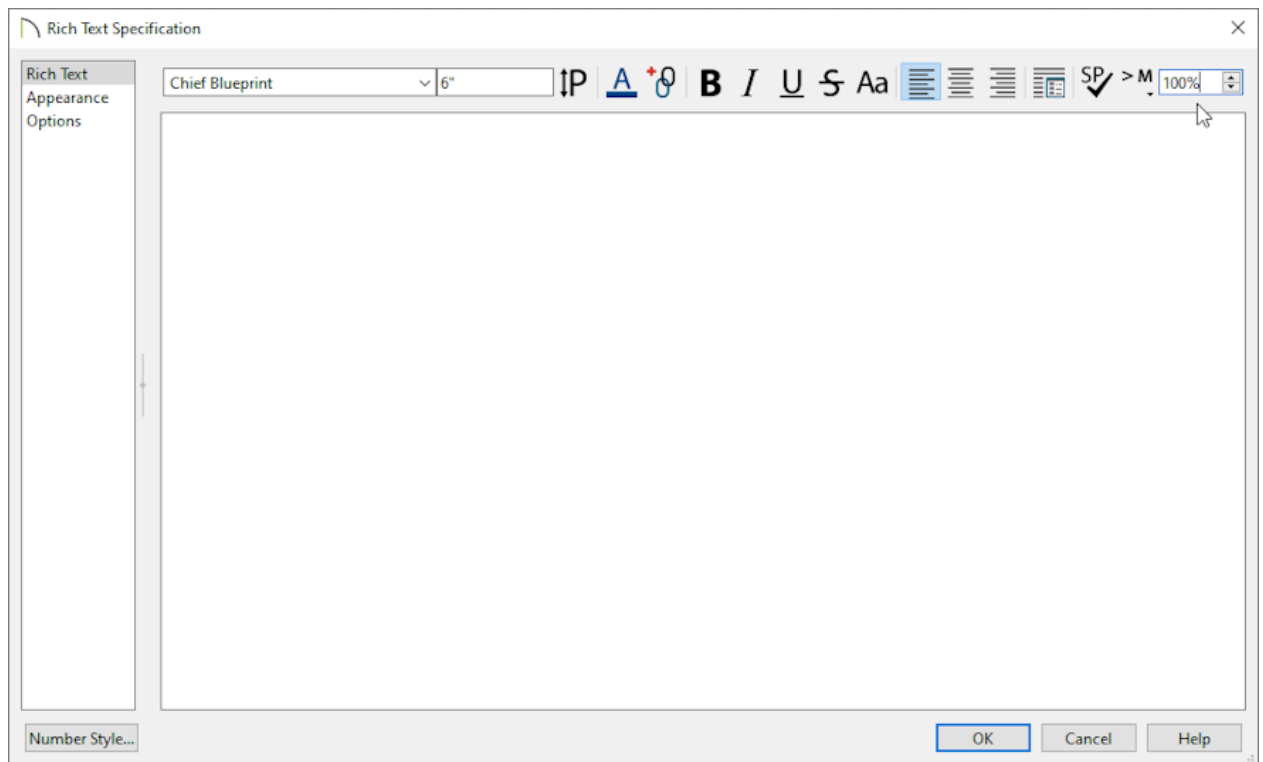


3. Click **OK** to apply this change.

## To change the display size of Text while in the Rich Text Specification

1. **Select**  a rich tech object and **Open**  it to specification.
2. On the **RICH TEXT** panel of the dialog that opens, adjust the **Zoom** percentage in the top corner to adjust the display size of the text while in the dialog.

**Note:** This will not edit the size of the text within your plan/layout file. For information on adjusting the size of text placed in your designs, please see the [Related Articles](#) section below.




#### Related Articles

- 📖 [Adjusting the Font Size of Text \(/support/article/KB-00183/adjusting-the-font-size-of-text.html\)](/support/article/KB-00183/adjusting-the-font-size-of-text.html)
- 📖 [Changing What Dimensions Locate \(/support/article/KB-00941/changing-what-dimensions-locate.html\)](/support/article/KB-00941/changing-what-dimensions-locate.html)
- 📖 [Creating and Using a Custom Text Style \(/support/article/KB-01325/creating-and-using-a-custom-text-style.html\)](/support/article/KB-01325/creating-and-using-a-custom-text-style.html)
- 📖 [Modifying the Text Styles of Labels \(/support/article/KB-00011/modifying-the-text-styles-of-labels.html\)](/support/article/KB-00011/modifying-the-text-styles-of-labels.html)



[\(https://chieftalk.chiefarchitect.com/\)](https://chieftalk.chiefarchitect.com/)

 ([/blog/](#))



<https://www.facebook.com/ChiefArchitect>



<https://www.youtube.com/user/ChiefArchitectInc>



<https://www.instagram.com/chiefarchitect/>



<https://www.houzz.com/pro/chiefarchitect/>



<https://www.pinterest.com/chiefarchitect/>

[208-292-3400 \(tel:+1-208-292-3400\)](tel:208-292-3400)

© 2000–2025 Chief Architect, Inc.

[Terms of Use \(/company/terms.html\)](#)

[Privacy Policy \(/company/privacy.html\)](#)