

Determining If Your Computer is 32-Bit or 64-Bit

Reference Number: **KB-01230**

Last Modified: **July 8, 2021**

The information in this article applies to:



QUESTION


How do I determine if I have a 32-bit or 64-bit system?

ANSWER

In this article, we will explain how to determine if your system is a 32-Bit or 64-Bit system. Please select the option that is applicable to your operating system.

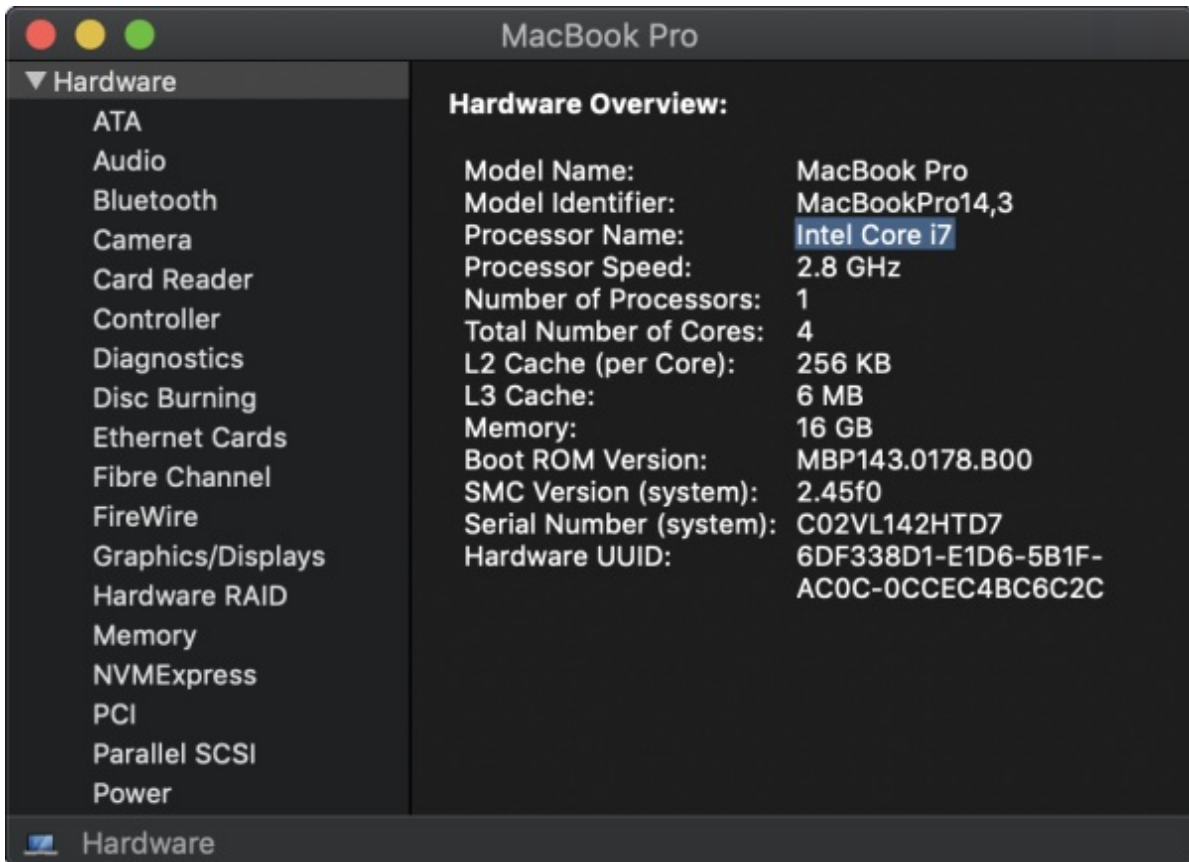
- [Apple macOS](#)
- [Microsoft Windows](#)

To determine system type for macOS

1. Open the **Apple**  menu and choose **About This Mac**.
2. Click the **System Report** button. If you do not see a **System Report** button, click the

More Info button and then click the **System Report** button.


3. Under the **Hardware** panel, locate the **Processor Name** in the **Hardware Overview**.

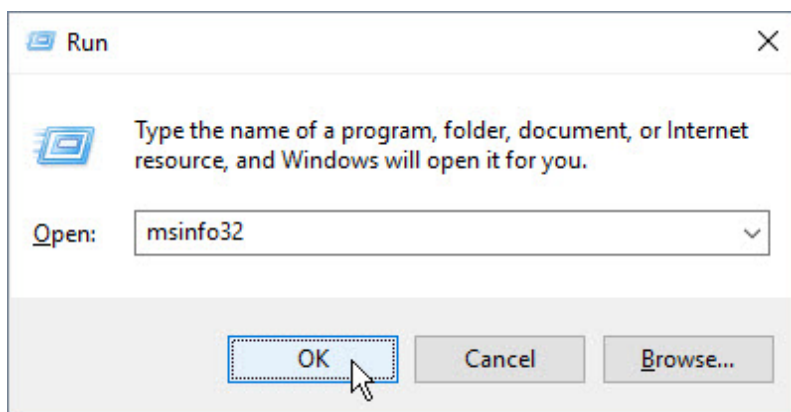


4. Use the chart below to identify your processor type.

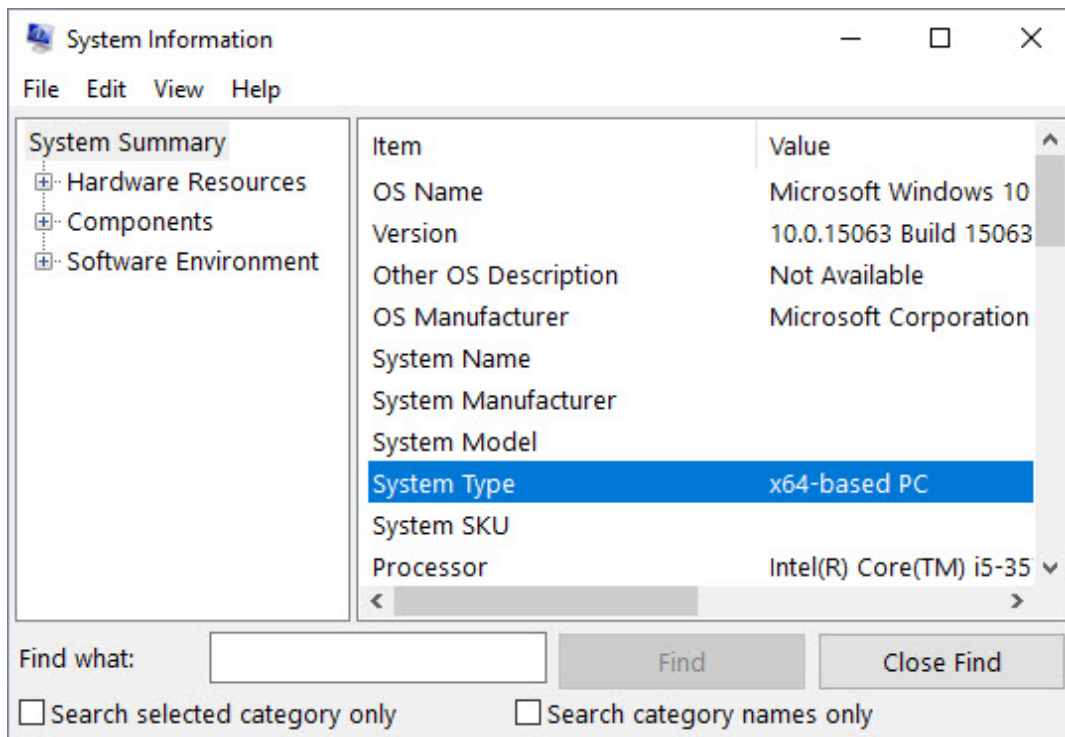
Processor Name	32- or 64-bit
Intel Core Solo	32 bit
Intel Core Duo	32 bit
Intel Core 2 Duo	64 bit
Intel Quad-Core Xeon	64 bit
Dual-Core Intel Xeon	64 bit
Quad-Core Intel Xeon	64 bit
Core i3	64 bit
Core i5	64 bit
Core i7	64 bit

To determine system type for Windows

1. On the keyboard, hold down the **Windows Key**  and press the letter **R**.
2. In the **Run** dialog that displays, type in **msinfo32** and click **OK**.



3. In the **System Information** dialog that displays, on the **System Summary** panel, look for the line that says **System Type**



- System Type **x64-based PC** means that you have a 64-bit system.
- System Type **x86-based PC** means that you have a 32-bit system.

Related Articles

[📄 Chief Architect Minimum System Requirements \(/support/article/KB-02761/chief-architect-minimum-system-requirements.html\)](/support/article/KB-02761/chief-architect-minimum-system-requirements.html)

[📄 Retrieving System Information to Send to Technical Support \(/support/article/KB-01867/retrieving-system-information-to-send-to-technical-support.html\)](/support/article/KB-01867/retrieving-system-information-to-send-to-technical-support.html)



[\(https://chieftalk.chiefarchitect.com/\)](https://chieftalk.chiefarchitect.com/)

 [\(/blog/\)](/blog/)



[\(https://www.facebook.com/ChiefArchitect\)](https://www.facebook.com/ChiefArchitect)



[\(https://www.youtube.com/user/ChiefArchitectInc\)](https://www.youtube.com/user/ChiefArchitectInc)



[\(https://www.instagram.com/chiefarchitectsoftware/](https://www.instagram.com/chiefarchitectsoftware/)



[\(https://www.houzz.com/pro/chiefarchitect/\)](https://www.houzz.com/pro/chiefarchitect/)



[\(https://www.pinterest.com/chiefarchitect/\)](https://www.pinterest.com/chiefarchitect/)

[208-292-3400 \(tel:+1-208-292-3400\)](tel:+1-208-292-3400)

© 2000–2021 Chief Architect, Inc.

[Terms of Use \(/company/terms.html\)](#)

[Privacy Policy \(/company/privacy.html\)](#)