

Creating Realistic Lighting Effects for a Fireplace

Reference Number: **KB-01234**

Last Modified: **June 28, 2023**

The information in this article applies to:



QUESTION




How can I make my fireplace appear to be glowing and casting light around my room?



ANSWER

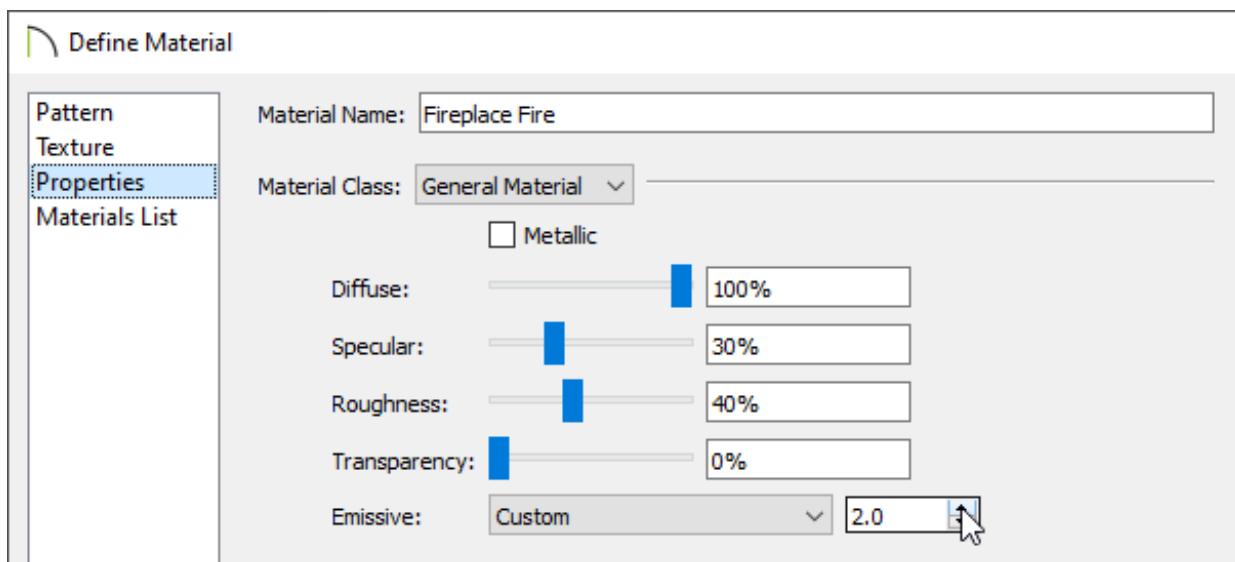
Adjust fire materials to have an emissive value and then add additional lights to provide a realistic, glowing, fireplace effect.

To create a 'Glowing Flame' effect

1. **Open**  the plan that contains a fire material that you'd like to modify.
2. Navigate **3D> Create Perspective View> Full Camera**  and click and drag towards the fire material to create a camera view.
3. Next, select **3D> Adjust Materials> Adjust Material Definition**  and click on the flame material.

Note: If the flame material is behind a glass panel or other obstacle, you can click on the Delete Surfaces tool and then click on the glass panel to temporarily hide that component.


4. On the **PROPERTIES** panel of the **Define Material** dialog that displays, increase the **Emissive** setting to your liking, then click **OK**.

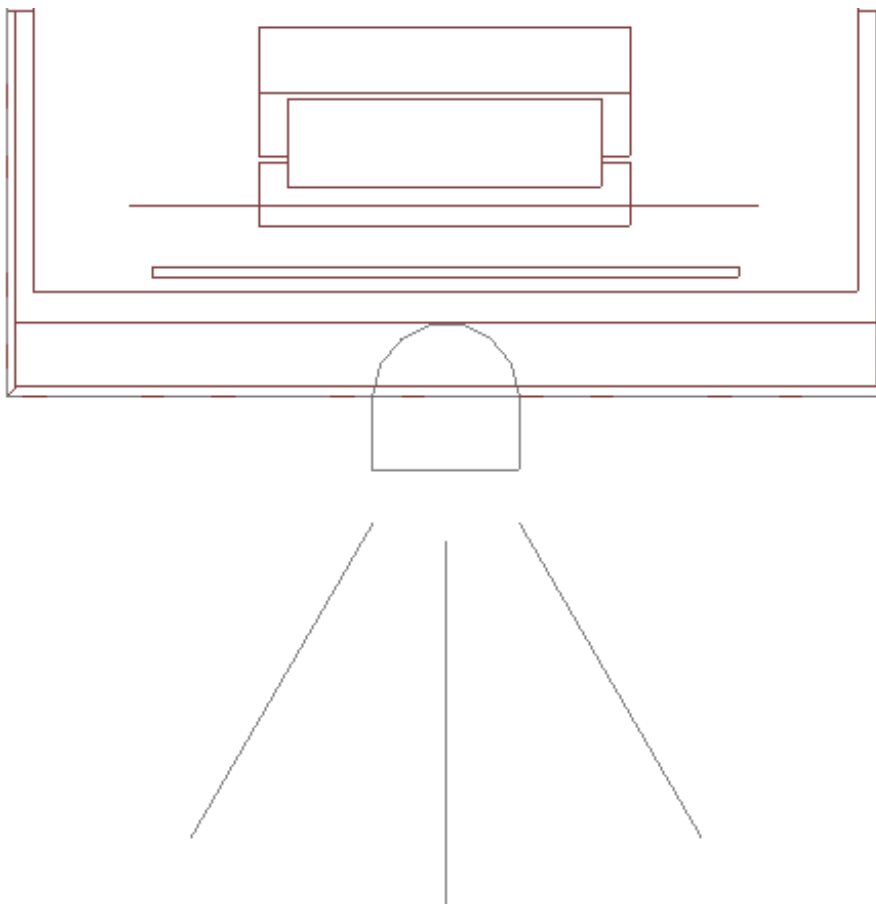



Emissive controls how bright a material appears independent of the lighting in the scene. It can be used to simulate surfaces that are glowing with their own light. Use the Emissive drop-down list or input your own value using the spin control arrows or text field. This setting is only available for General materials.

The flame should now appear to be glowing.

To create the lighting for the rest of the room

1. From a floor plan view, select **3D> Lighting> Add Lights** .
2. Left-click and drag in front of the fireplace to draw a spot light facing away from the fireplace.



3. Using the **Select Objects**  tool, select the newly placed light source, then click the

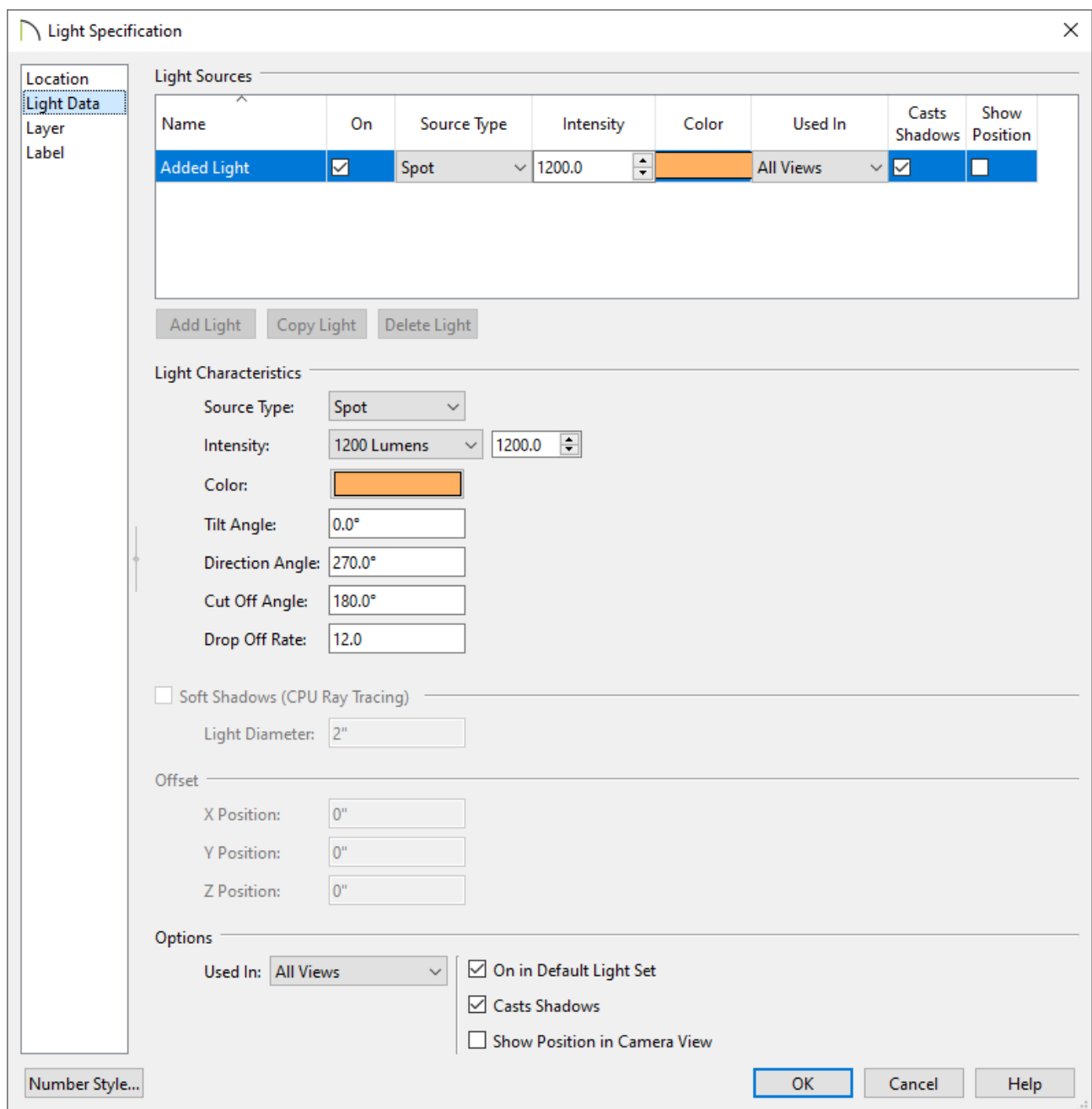
Note: If you have trouble selecting the light, try dragging a selection marquee encompassing the spot light. You can also navigate to 3D> Lighting> Adjust Lights, select the spot light that was created in the Adjust Lights dialog that appears, then click the Adjust button.

4. On the **LOCATION** panel of the **Light Specification** dialog that displays, specify the floor and height properties for the light.

In this example, 1 is specified as the Floor Number and the Absolute Elevation is set to 24".

5. On the **LIGHT DATA** panel, specify your desired properties for the spot light, then click **OK**.

In this example, the Color is set to orange, the Cut Off Angle is set to 180°, and the Drop Off Rate is set to 12.0.



The room will now be lit by the spot light in front of the fireplace, and appear as though the light is coming from the fire.

Related Articles

[Blending Colors with Materials \(/support/article/KB-00004/blending-colors-with-materials.html\)](/support/article/KB-00004/blending-colors-with-materials.html)

[Changing the Transparency of a Material \(/support/article/KB-00097/changing-the-transparency-of-a-material.html\)](/support/article/KB-00097/changing-the-transparency-of-a-material.html)

[Creating a Custom Fireplace and Chimney \(https://www.homedesignersoftware.com/support/article/KB-00744/creating-a-custom-fireplace-and-chimney.html\)](https://www.homedesignersoftware.com/support/article/KB-00744/creating-a-custom-fireplace-and-chimney.html)



[\(https://chieftalk.chiefarchitect.com/\)](https://chieftalk.chiefarchitect.com/)

 [\(/blog/\)](https://chieftalk.chiefarchitect.com/blog/)



[\(/https://www.facebook.com/ChiefArchitect\)](https://www.facebook.com/ChiefArchitect)



[\(/https://www.youtube.com/user/ChiefArchitectInc\)](https://www.youtube.com/user/ChiefArchitectInc)



[\(/https://www.instagram.com/chiefarchitect/\)](https://www.instagram.com/chiefarchitect/)



[\(/https://www.houzz.com/pro/chiefarchitect/\)](https://www.houzz.com/pro/chiefarchitect/)



[\(/https://www.pinterest.com/chiefarchitect/\)](https://www.pinterest.com/chiefarchitect/)

[208-292-3400 \(tel:+1-208-292-3400\)](tel:+1-208-292-3400)

© 2000–2023 Chief Architect, Inc.

[Terms of Use \(/company/terms.html\)](/company/terms.html)

[Privacy Policy \(/company/privacy.html\)](/company/privacy.html)