

Resetting Template Files

Reference Number: **KB-01866**

Last Modified: **June 26, 2025**

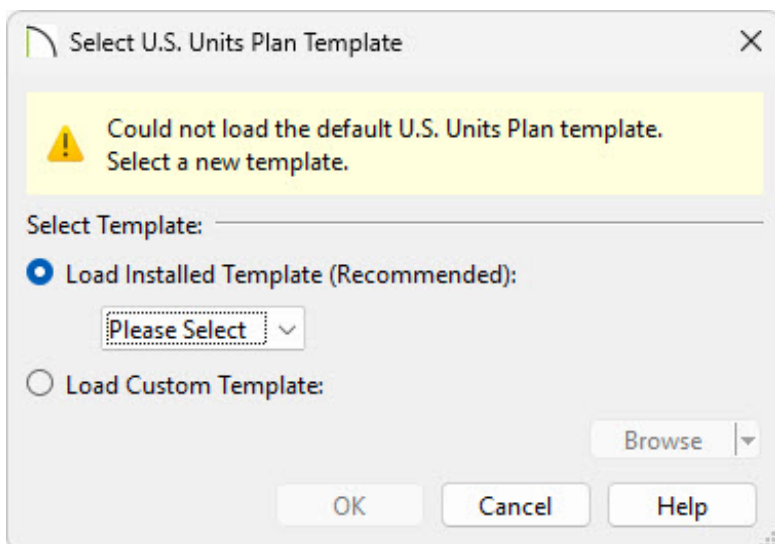
This article also applies to the following legacy products:
Pro | Architectural | Suite

DESCRIPTION

My templates are outdated or have been modified. How can I reset, or restore, the template files used by my program version?

OR

When I try to open a new plan to start a new project, this dialog displays:



OR

I'm using X10, Home Designer 2019, or a prior program version and I receive the following message:

- "#272011641 - The default template plan "X" was not found. A new plan will be created without using a template."

What should I do?

RESOLUTION

Whenever a new plan file or layout file is created, all of its settings are drawn from a template. A template is a plan or layout file in which a user has setup the default settings, layer display options, wall types, and other user-defined options to suit their particular needs. Template files are otherwise blank, with no architectural or CAD drawings so that they can serve as the basis for new files.

In some instances, these template files are migrated from earlier program versions and/or may contain older content, and it may be necessary to refresh or reset them so that you're using the latest available files for the current version of the software.


In other instances, a message may display if you try to open a new plan or layout, but the program cannot find the file that you have specified as your template. When this occurs, choose either Load Installed Template and choose a template from the drop-down menu, or select Load Custom Template and browse your system for a template file. If no templates display in the Load Installed Template drop-down, resetting the template files may be necessary.


If you're using X10, Home Designer 2019, or a prior program version, resetting templates may be required if you receive an error message when creating a new plan or layout.

- [Resetting templates in Chief Architect X14, Home Designer 2023, and newer](#)
- [Resetting templates in Chief Architect X13, Home Designer 2022, and prior](#)
- [Specifying a default plan or layout template*](#)

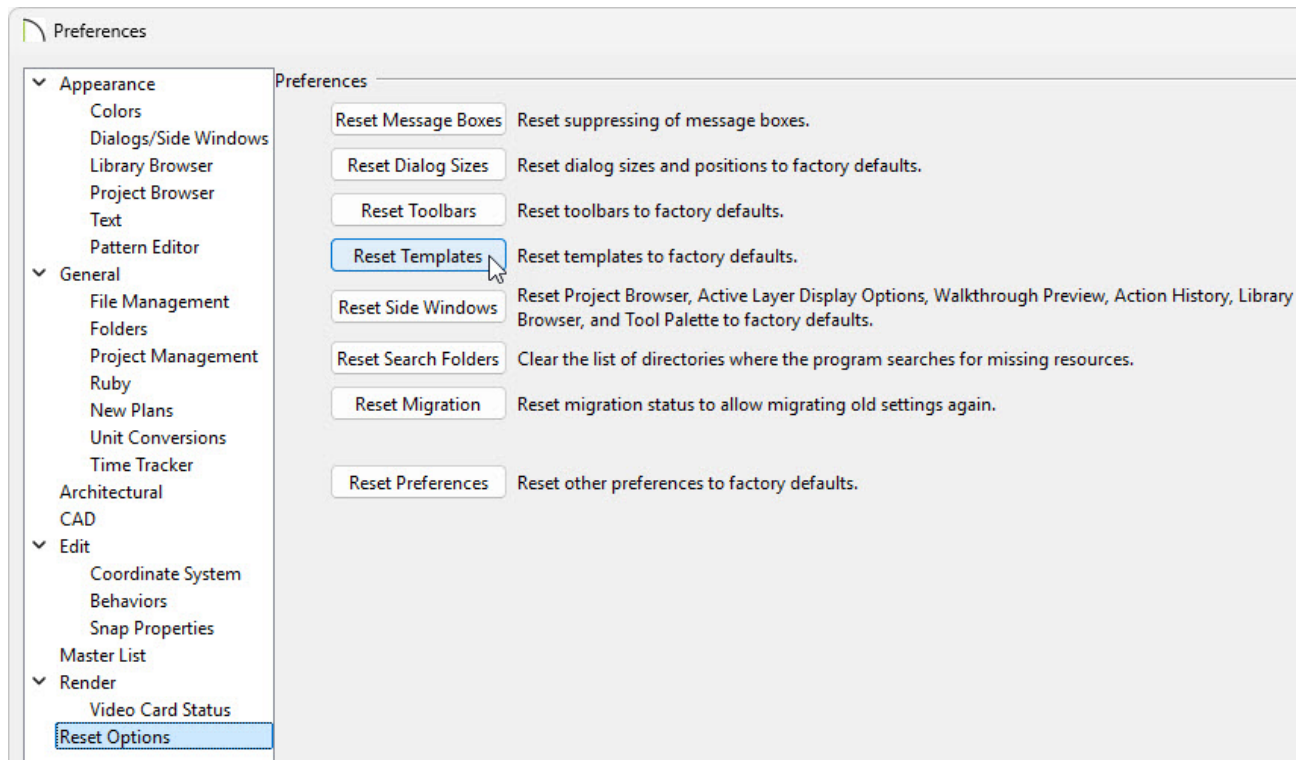
**Applies to Chief Architect only*

To reset the template files for Chief Architect X14, Home Designer 2023, and newer versions

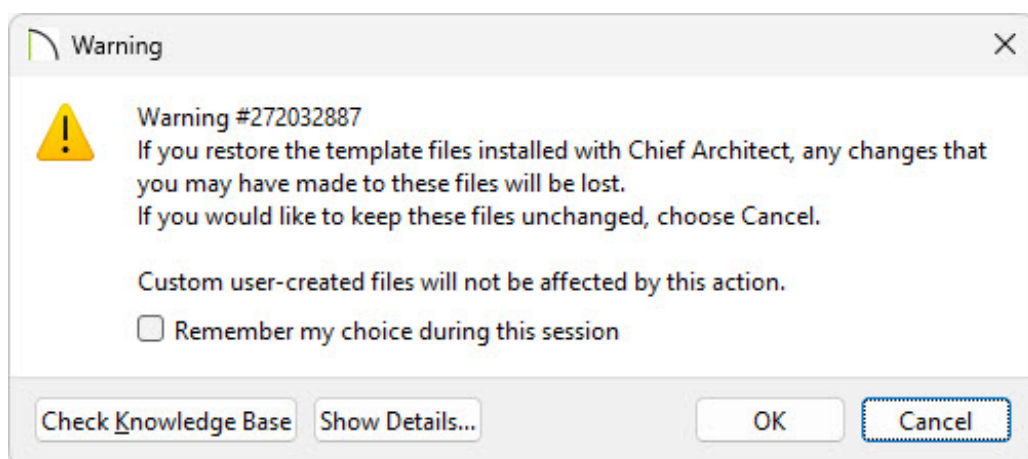
1. In your Chief Architect or Home Designer program, select **Edit> Preferences**  from the menu if you're on a Windows computer or **Chief Architect> Preferences**


 if you're on a Mac.


2. On the **RESET OPTIONS** panel of the **Preferences** dialog, click the **Reset Templates** button.



3. A message will appear stating "#272032887 - If you restore the template files installed with Chief Architect, any changes that you may have made to these files will be lost. If you would like to keep these files unchanged, choose Cancel. Custom user created files are not affected by this action." Click **OK** to restore the template files that were distributed with your program, or click **Cancel** to cancel the operation.



4. In Home Designer, when you choose the **New Plan**  option, either a new plan will automatically open based on the default template, or you will see all of the templates that are distributed with your program in the **Create New Plan** dialog.

In Chief Architect, if you choose **New Plan**  and an undesired template opens, follow the steps [in the last section of this article](#) to specify a default template.

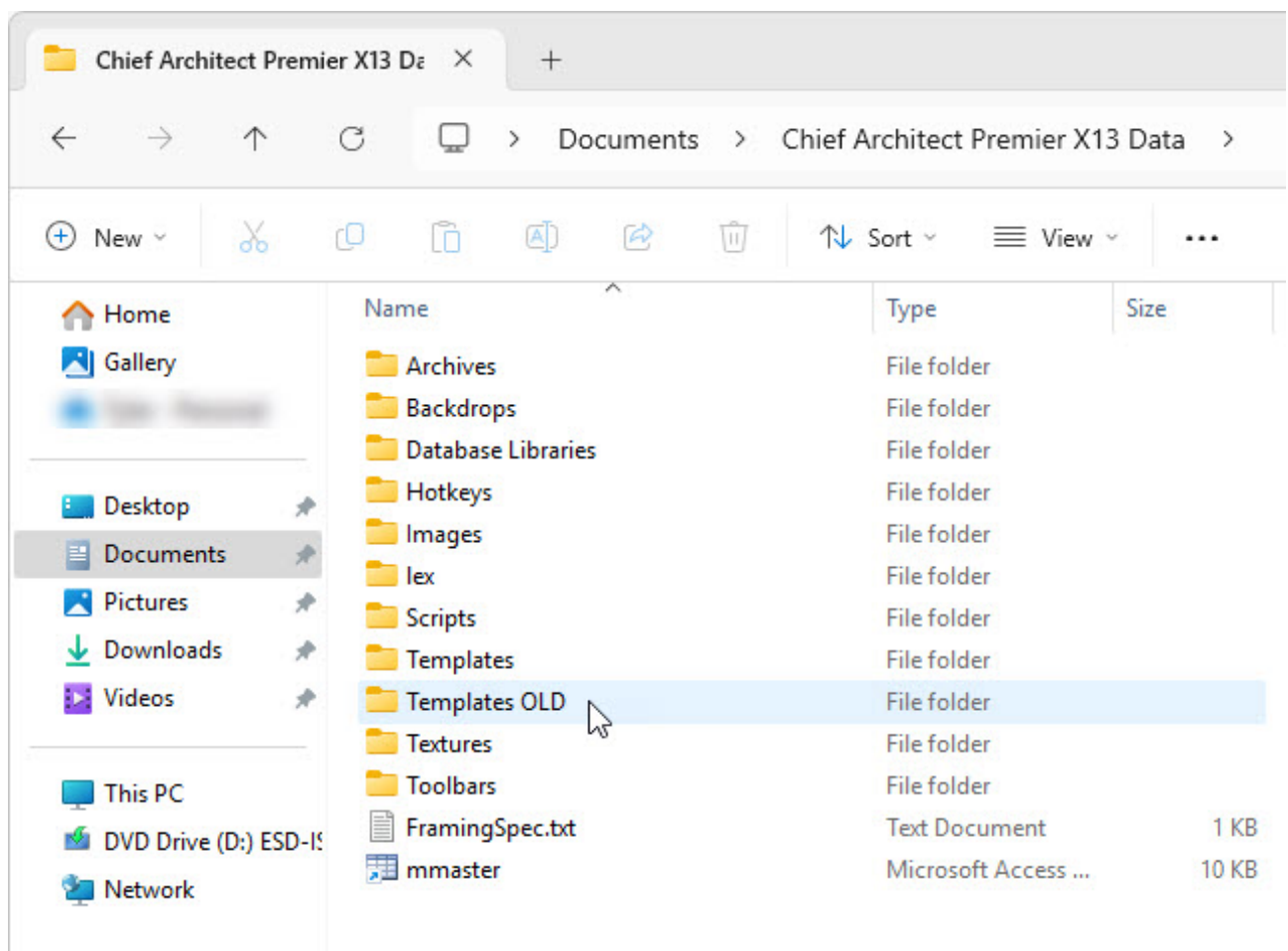
To reset the template files for Chief Architect X13, Home Designer 2022, and prior versions

1. Close out of the Chief Architect or Home Designer program.
2. Navigate to your **Documents** directory on your system, then locate and open the program's Data folder.

Example: Chief Architect Premier X13 Data or Home Designer Pro 2022 Data


3. **Rename** the Templates folder located here by adding the word "OLD" to the end of the folder name.


Example: TemplatesOLD



4. Launch your Chief Architect or Home Designer program.



You may briefly see a progress indicator as the program copies files to create a new Templates folder in the program's Data folder.

5. In Home Designer programs, when you choose the **New Plan**  option, either a new plan will open automatically based on the default template, or you will templates listed in the **Create New Plan** dialog and be able to start a new file using one of these styles.

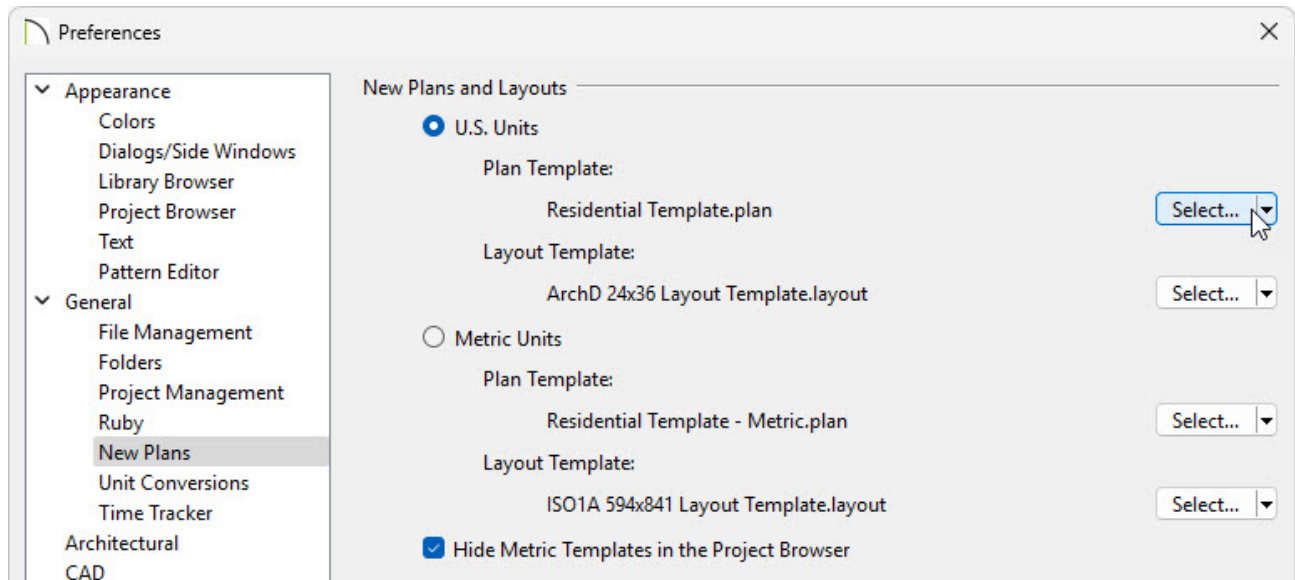
In Chief Architect programs, if you choose **New Plan**  and continue to receive the same warning, follow the steps [in the section below](#) to specify a plan or layout template.

To specify a default plan or layout template*

**Applies to Chief Architect only.*

1. Select **Edit> Preferences**  from the menu if you're on a Windows computer or **Chief Architect> Preferences**  if you're on a Mac.
2. Access the **NEW PLANS** panel of the **Preferences** dialog.

When using Project Management in X17 and newer:



- Click the **Select** button to the right of the Plan/Layout Template option to open the **Select a Replacement Template** dialog.

If you don't see the **Select** button, click on the drop-down arrow next to **Import** and then choose **Select**.

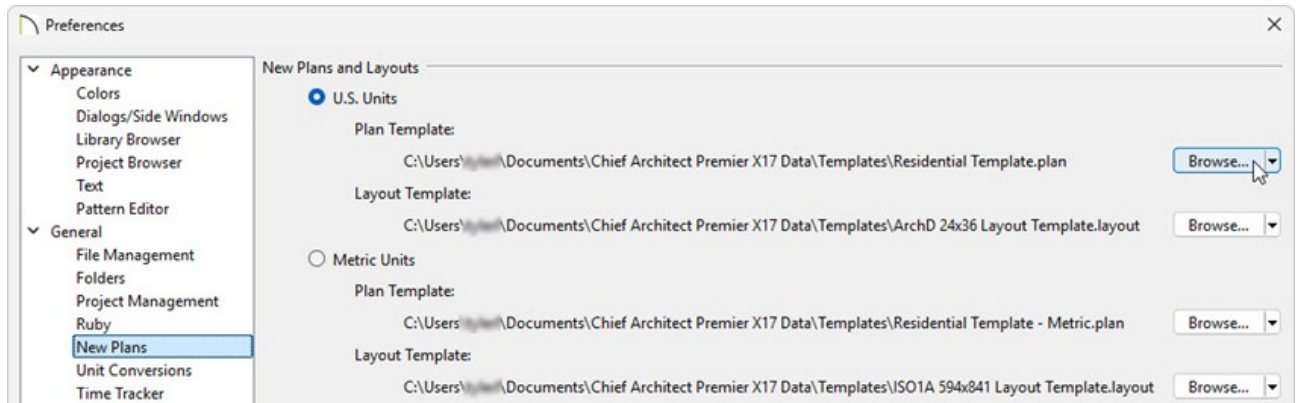
- Expand the **Plan and Layout Templates** folder to select an already imported Plan/Layout template, and click **Select** to use it as your template.

The default plan templates for Imperial, U.S. Units are the "Residential Template.plan" and "Kitchen and Bath Template.plan," while the default plan templates for Metric Units are the "Residential Template - Metric.plan" and "Kitchen and Bath Template - Metric.plan."

The default layout template for Imperial, U.S. Units is the "ArchD 24x36 Layout Template.layout," while the default layout template for Metric Units is the "ISO1A 594x841 Layout Template.layout."

In X16 and prior, or when using Traditional File Management in X17 and newer,

follow the steps below:



- Click the **Browse** button to the right of the Plan/Layout Template text field for the unit of measurement you're using.

If you don't see the **Browse** button, click on the drop-down arrow next to **Edit Path** and then choose **Browse**.

- In the dialog that opens next, browse to the location of your plan/layout template file, select it, then click **Open** to specify this file as your default layout template.

The default plan templates for Imperial, U.S. Units are the "Residential Template.plan" and "Kitchen and Bath Template.plan," while the default plan templates for Metric Units are the "Residential Template - Metric.plan" and "Kitchen and Bath Template - Metric.plan."

The default layout template for Imperial, U.S. Units is the "ArchD 24x36 Layout Template.layout," while the default layout template for Metric Units is the "ISO1A 594x841 Layout Template.layout."

Only choose a template file with *- Metric.plan, *M.plan, * - Metric.layout, *M.layout, or ISO in the name if you're using Metric Units.

Never specify a *.layout file as your plan template.

The default templates are located in program's Data folder, which by default, is located in your user Documents folder.



- Once the templates are to your liking, click **OK**.

3. Now, when you select **New Project** , **New Plan** , or **New Layout** , the template(s) specified will be used.

To learn more about creating plan and layout templates in Chief Architect, please see the [Related Articles](#) section below.

[Return To Top](#)

Related Articles

-  [Creating and Using Layout Templates \(/support/article/KB-00737/creating-and-using-layout-templates.html\)](/support/article/KB-00737/creating-and-using-layout-templates.html)
-  [Creating and Using Plan Templates \(/support/article/KB-00463/creating-and-using-plan-templates.html\)](/support/article/KB-00463/creating-and-using-plan-templates.html)



[\(https://chieftalk.chiefarchitect.com/\)](https://chieftalk.chiefarchitect.com/)

 [\(/blog/\)](/blog/)



[\(https://www.facebook.com/ChiefArchitect\)](https://www.facebook.com/ChiefArchitect)



[\(https://www.youtube.com/user/ChiefArchitectInc\)](https://www.youtube.com/user/ChiefArchitectInc)



[\(https://www.instagram.com/chiefarchitect/\)](https://www.instagram.com/chiefarchitect/)



[\(https://www.houzz.com/pro/chiefarchitect/\)](https://www.houzz.com/pro/chiefarchitect/)



[\(https://www.pinterest.com/chiefarchitect/\)](https://www.pinterest.com/chiefarchitect/)

[208-292-3400 \(tel:+1-208-292-3400\)](tel:+1-208-292-3400)

© 2000–2025 Chief Architect, Inc.

[Terms of Use \(/company/terms.html\)](/company/terms.html)

[Privacy Policy \(/company/privacy.html\)](/company/privacy.html)