

## Creating an Appliance Garage with a Tambour Door

---

Reference Number: **KB-02072**

Last Modified: **July 31, 2024**

---

The information in this article applies to:



### QUESTION

I need to create an appliance garage with a vertical sliding tambour door in my cabinet. Is there a way to do this in Chief Architect?




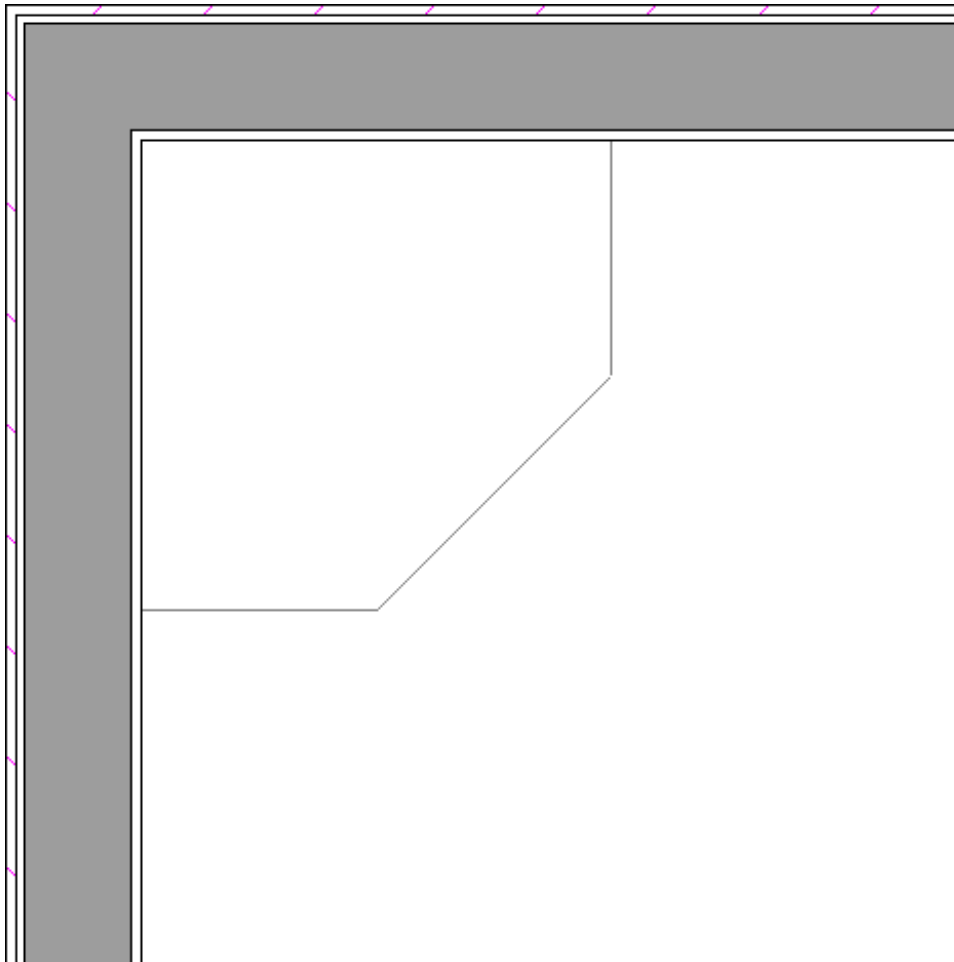
## ANSWER



You can change the door style of any cabinet using a selection of pre-made doors located in the Library Browser.

In this article, we will add a bread door, also known as a tambour door, to a wall cabinet using a door style located in the Chief Architect Core Catalogs.

### To create an appliance garage with a tambour door

1. Start by adding a wall cabinet to your plan by going to **Build> Cabinet> Wall Cabinet** . When moving the cursor into a corner, notice that the temporary preview will update to reflect a corner wall cabinet with a diagonal door. Click to place the the cabinet.



2. Using the **Select Objects**  tool, click on the wall cabinet, then select the **Open Object**  edit button.
3. On the **GENERAL** panel of the **Wall Cabinet Specification** dialog that opens, adjust properties such as the **Left/Right Side Widths**, **Height**, and **Finished Floor to Top/Bottom** values to your liking.

In this example, the Left and Right Side Widths are set to 24", the Height is set to 18", and the Finished Floor to Top is set to 54".

Wall Cabinet Specification

**General**

- Box Construction
- Front/Sides/Back
- Door/Drawer
- Accessories
- Opening Indicators
- Moldings
- Layer
- Fill Style
- Materials
- Label
- Components
- Object Information
- Schedule

Cabinet Style

Type:   Filler

Size/Position

Left Side Width:

Height:

Right Side Width:

Bow Depth:

Elevation Reference:

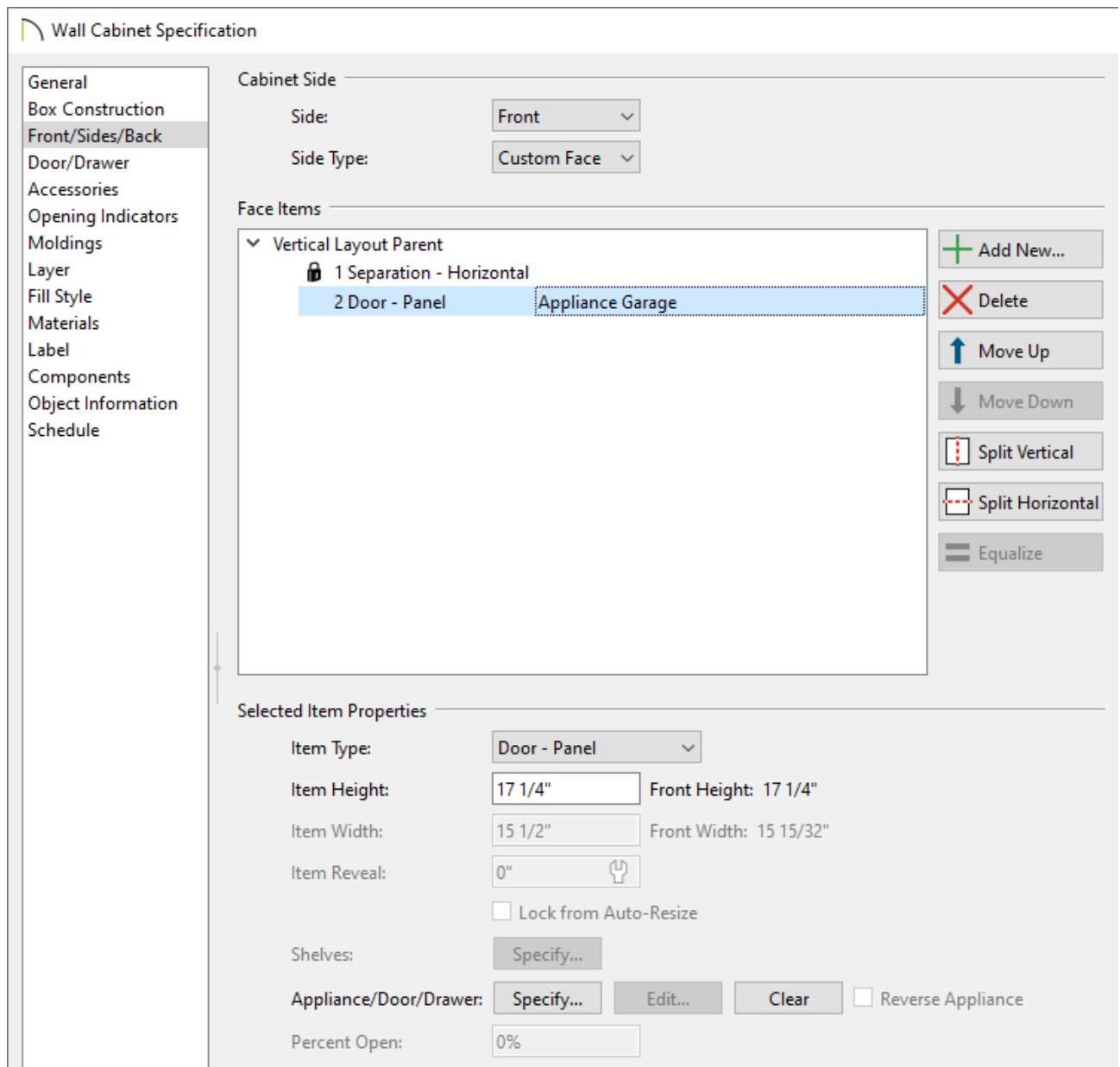
Finished Floor to Top:

Finished Floor to Bottom:

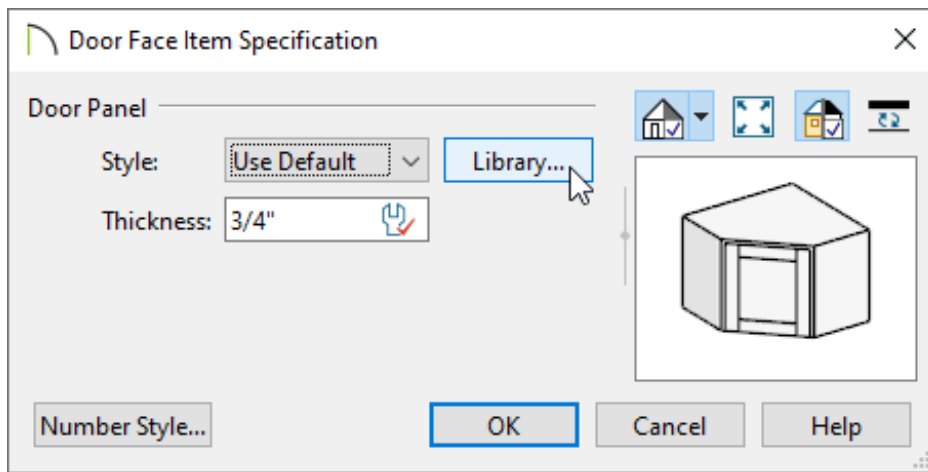
- On the **BOX CONSTRUCTION** panel, change the Door/Drawer Overlay to **Inset** with a **Clearance** of **0**.

The top and bottom of a cabinet can also be toggled on/off. To remove the bottom of the cabinet, select the "No Bottom" option.

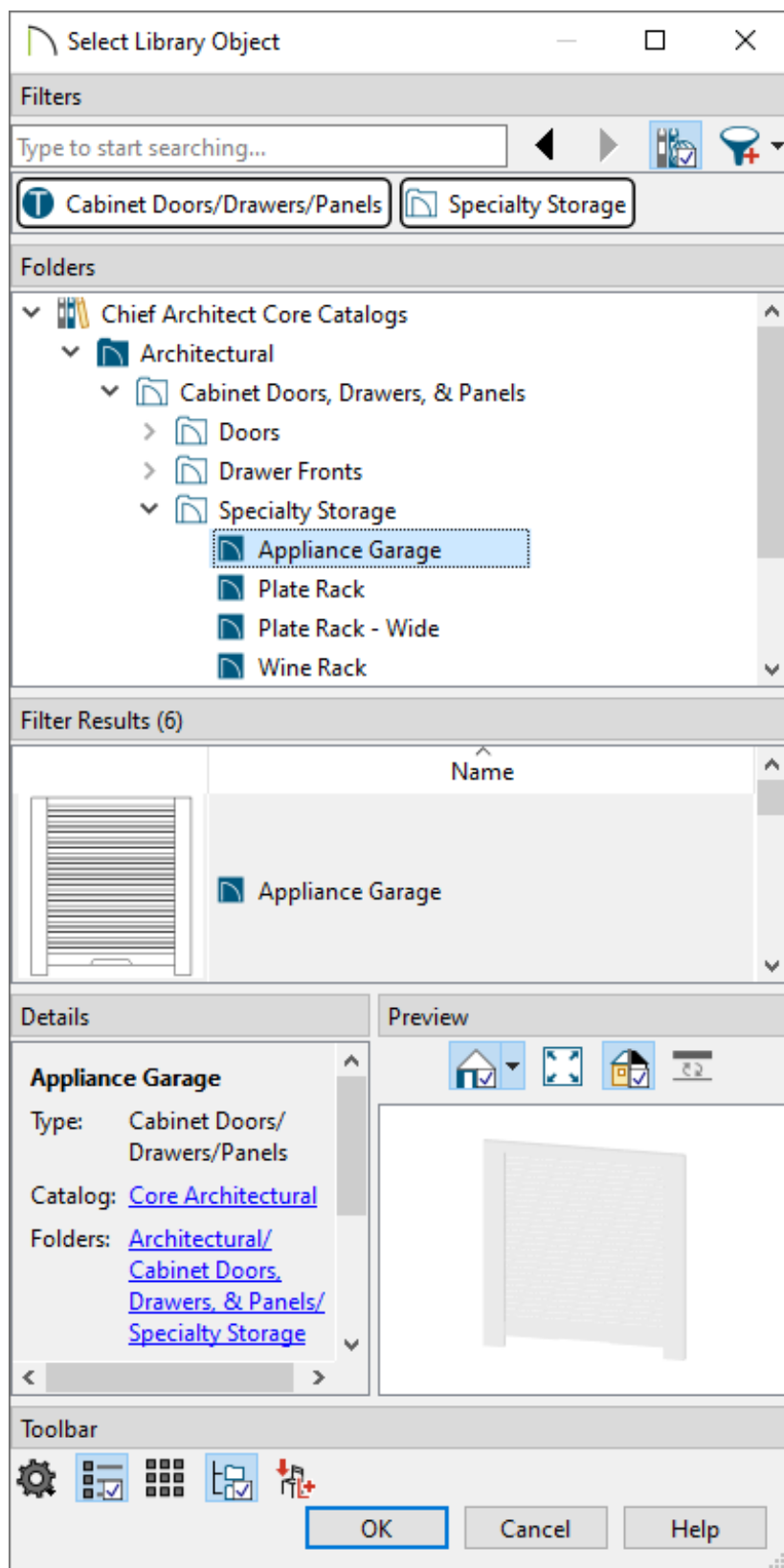
- On the **FRONT/SIDES/BACK** panel:



- Select the **3 Separation - Horizontal** face item option and click the **Delete** button to remove it from the cabinet.
- Next, click on the **2 Door - Auto Right** option to select it, then change the Item Type to **Door - Panel** using the drop-down menu.
- Click the **Specify** button next to Appliance/Door/Drawer.
- In the **Door Face Item Specification** dialog, click the **Library** button.



- In the **Select Library Object** dialog that opens next, browse to **Chief Architect Core Catalogs> Architectural> Cabinet Doors, Drawers, & Panels> Specialty Storage**, choose **Appliance Garage**, then click **OK**.



- Specify the desired **Thickness\*** of the door, then click **OK** once again to return to the **Wall Cabinet Specification** dialog.

*\*Applies to Chief Architect X16 and newer versions.*

6. Make any other desired modifications to the cabinet, such as to the **MATERIALS** and **MOLDINGS**, then click **OK**.

7. Take a **Camera**  view to see the results.



You may also find it easier to place a corner cabinet on top of the appliance garage while you're in a camera view.

---

#### Related Articles

[📄 Creating a Custom Cabinet and Adding it to the Library \(/support/article/KB-00446/creating-a-custom-cabinet-and-adding-it-to-the-library.html\)](/support/article/KB-00446/creating-a-custom-cabinet-and-adding-it-to-the-library.html)

[📄 Creating a Custom Wine Cabinet \(/support/article/KB-00433/creating-a-custom-wine-](/support/article/KB-00433/creating-a-custom-wine-)



[cabinet.html](#))

📄 [Creating Custom Vertical Cabinet Shelving \(/support/article/KB-03141/creating-custom-vertical-cabinet-shelving.html\)](#)

📄 [Replacing a Cabinet's Standard Shelves with Rollout Shelves or Drawers \(/support/article/KB-03142/replacing-a-cabinet-s-standard-shelves-with-rollout-shelves-or-drawers.html\)](#)



[\(https://chieftalk.chiefarchitect.com/\)](https://chieftalk.chiefarchitect.com/)

🗉 [\(/blog/\)](#)



[\(/https://www.facebook.com/ChiefArchitect\)](https://www.facebook.com/ChiefArchitect)



[\(/https://www.youtube.com/user/ChiefArchitectInc\)](https://www.youtube.com/user/ChiefArchitectInc)



[\(/https://www.instagram.com/chiefarchitect/\)](https://www.instagram.com/chiefarchitect/)



[\(/https://www.houzz.com/pro/chiefarchitect/\)](https://www.houzz.com/pro/chiefarchitect/)



[\(/https://www.pinterest.com/chiefarchitect/\)](https://www.pinterest.com/chiefarchitect/)