

Showing the As-Built in a Remodel Plan using CAD

Reference Number: **KB-02208**

Last Modified: **July 15, 2021**

The information in this article applies to:



QUESTION

I am working on an addition for a remodel project, is there a way that I can show the walls for the as-built structure compared to the new proposed walls in the same plan?

ANSWER


A great way to show the as-built condition on a remodel project is to create an "As-Built Mask" using a CAD block of the existing structure.

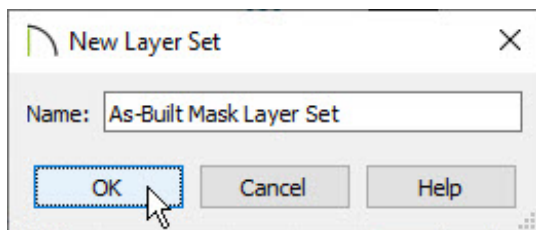
To have the CAD block only contain the necessary items, turn off the layers of any items unnecessary to the remodel. For example, furniture, cabinets, window labels, and roof planes. Also, a new layer needs to be created for the as-built mask.

If you would like to learn more about using Chief Architect for remodeling,

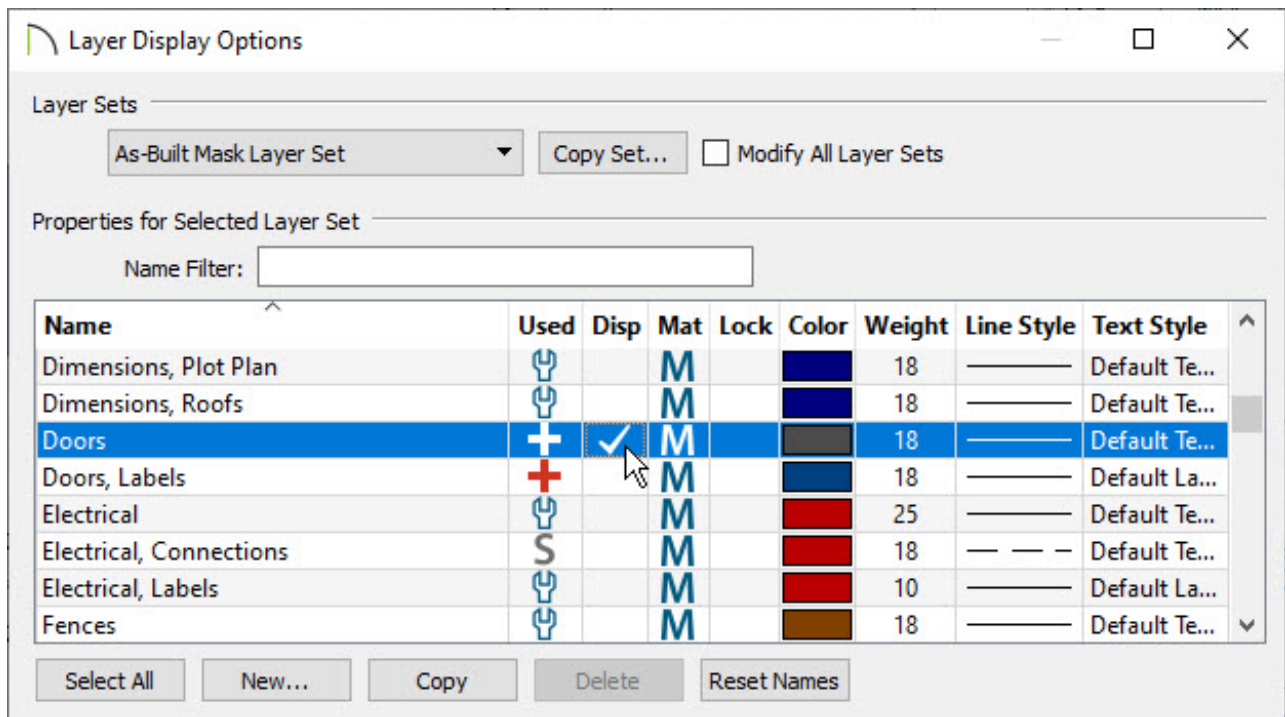
please see the [Remodeling Video Playlist](https://www.chiefarchitect.com/videos/#playlist-120) (<https://www.chiefarchitect.com/videos/#playlist-120>) which details the CAD mask process discussed below, as well as the option to reference other plan files starting with X11.

To setup your layers

1. Select **Tools> Layer Settings> Display Options**  from the menu.
2. In the **Layer Display Options** dialog, use the **Layer Sets** drop-down at the top to choose the **All Layers OFF** layer set.
3. Click **Copy Set** to make a copy of this layer set.
4. In the **New Layer Set** dialog, specify a **Name** for this layer set, then click **OK**. In this example we used **As-Built Mask Layer Set**.



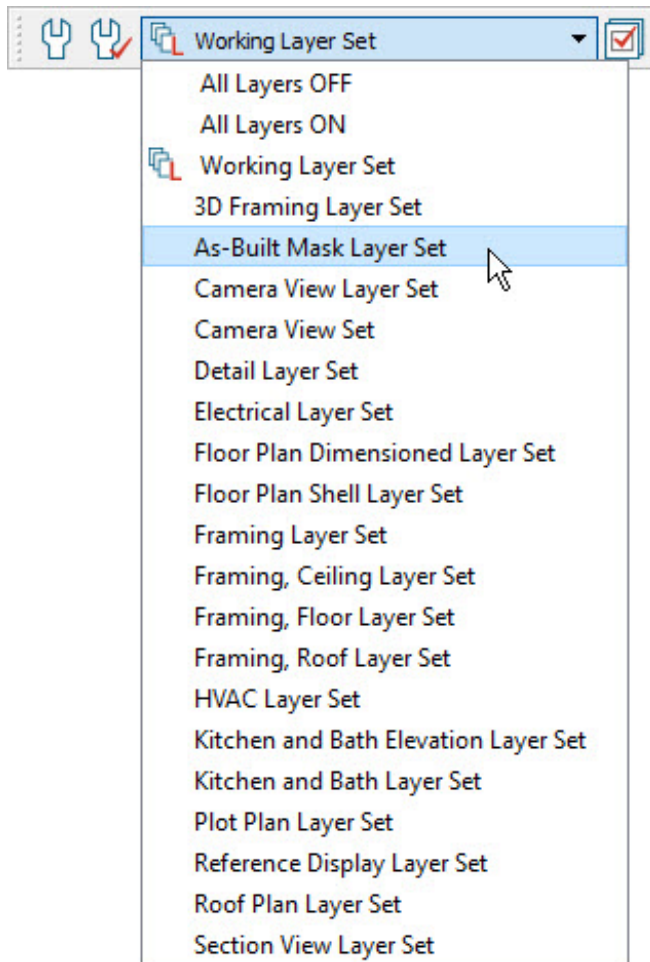
5. Make sure the **As-Built Mask Layer Set** is now selected and then turn on any layers that you want to see in the As-Built Mask.



In our example, we enabled the following layers:




- **Doors**
- **Stairs & Ramps**
- **Walls, Normal**
- **Walls, Main Layer Only**
- **Windows**

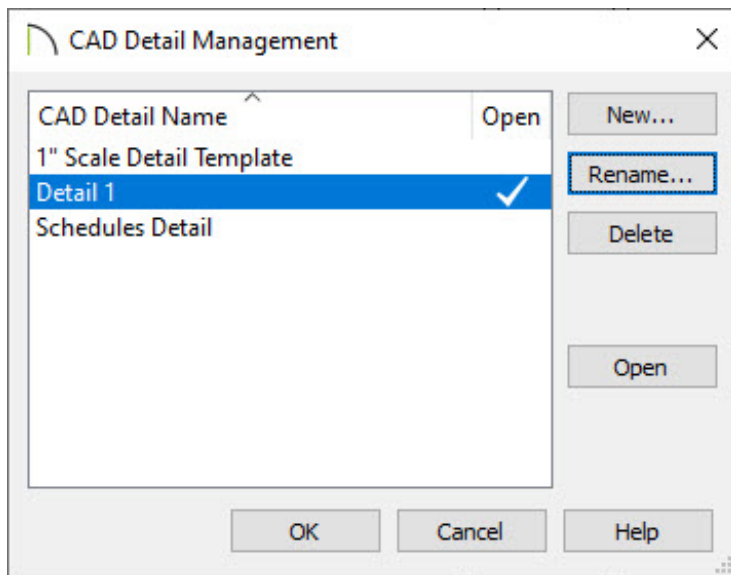
6. Once you have turned on the layers you need, click the **New** button and create a new layer named **CAD, As-Built Mask**, then click **OK**.
7. Click **OK** to close the **Layer Display Options** dialog.
8. In a floor plan view, switch the layer set to the **As-Built Mask Layer Set** by using the drop-down menu on your toolbar. The layer set can also be switched if it's linked to a Saved Plan View.



To learn more about Saved Plan Views, please see the following [Training Videos \(https://www.chiefarchitect.com/search/?default_tab=video&q=saved+plan+view&page=1\)](https://www.chiefarchitect.com/search/?default_tab=video&q=saved+plan+view&page=1).

To make a CAD Detail


1. Center the plan on screen by selecting **Window> Fill Window Building Only** .
2. Click **CAD> CAD Detail From View**  from the menu to create a new CAD detail.
3. Click **CAD> CAD Detail Management**  from the menu to open the **CAD Detail Management** dialog.




Here we can see the new CAD detail has been named **Detail 1** but if there are other details in your plan, you may want to rename it:

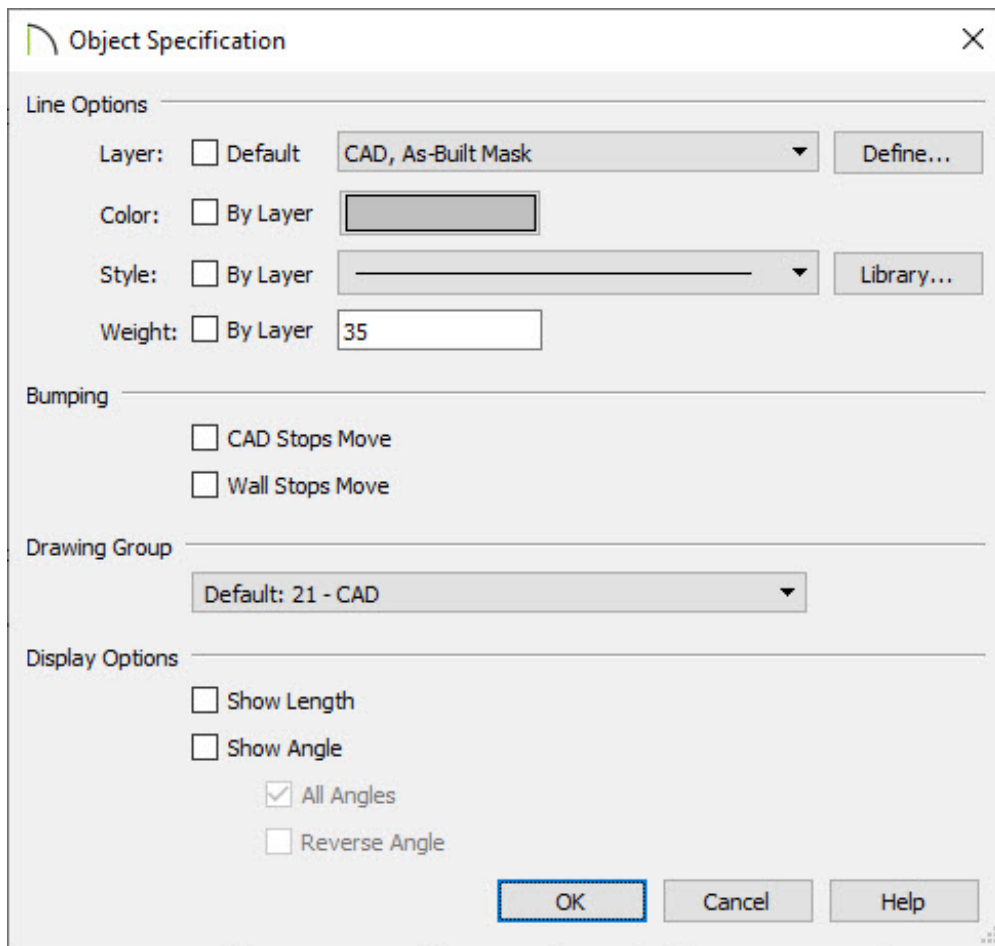
- Highlight the new detail, click the **Rename** button, and rename it to **As-Built Mask** and click **OK**.
- Click **OK** on the **CAD Detail Management** dialog to accept your changes and close it.

To adjust the line styles

1. With the **Select Objects**  tool, click and drag a selection marquee around the CAD detail.

Alternatively, you can navigate to **Edit> Select All** from the menu to select all CAD components present in the CAD detail.

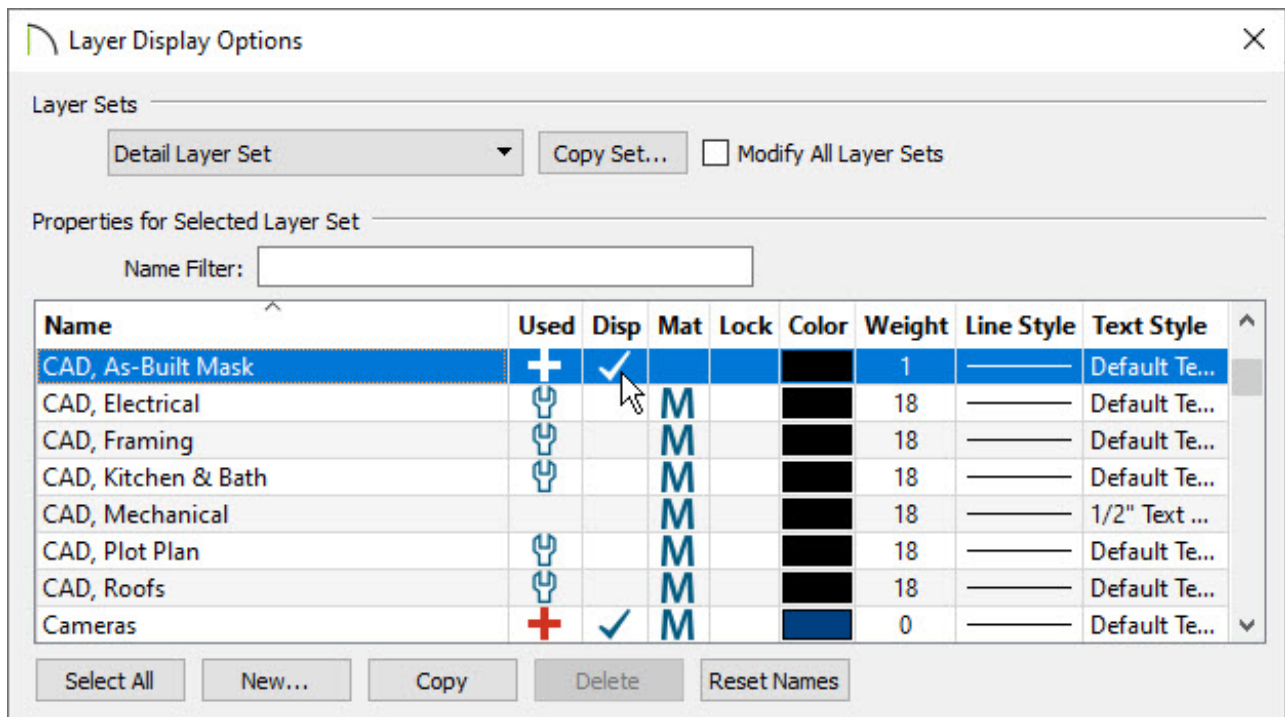
2. Click the **Open Object**  edit tool to open the **Object Specification** dialog.



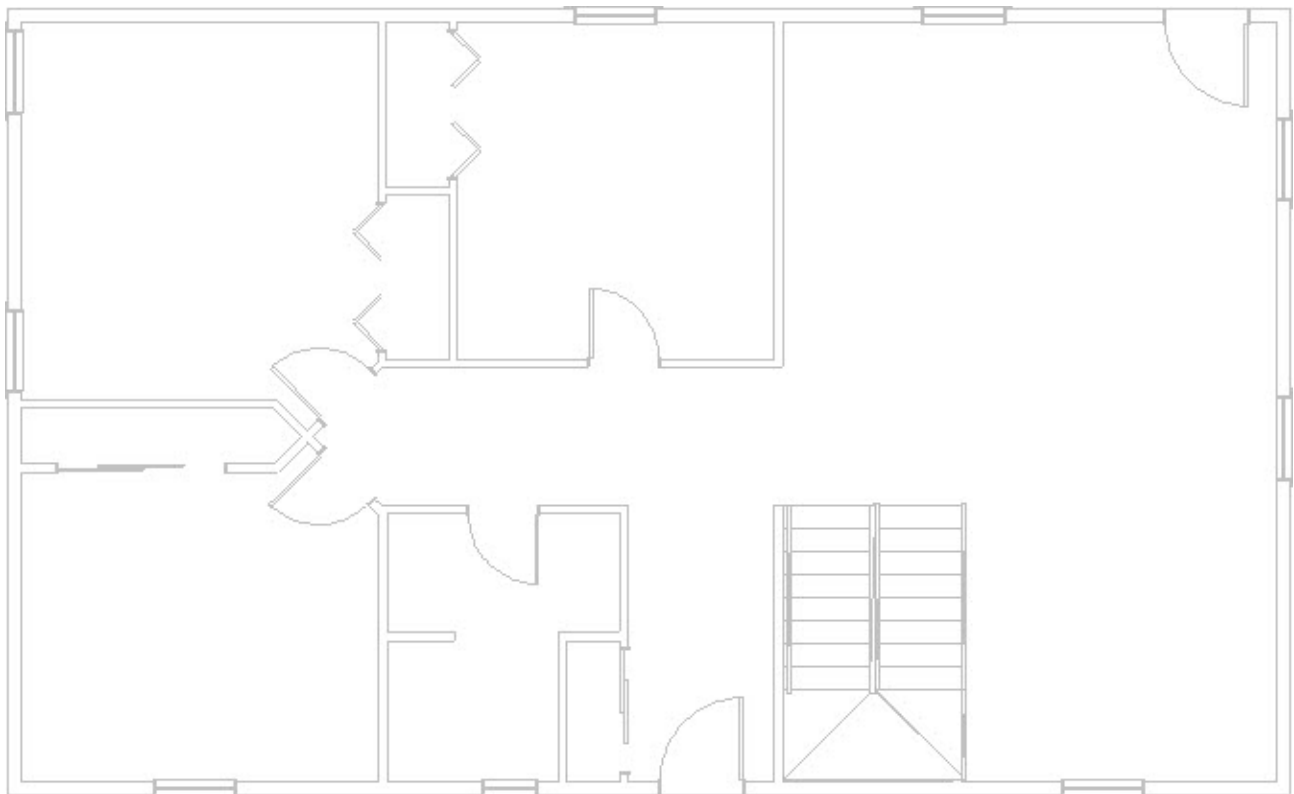
In this example we are adjusting the **Line Options** to the following:

- **Layer:** CAD, As-Built Mask
- **Color:** Gray
- **Style:** Solid Line
- **Weight:** 35


3. Click the **Define** button next the Layer option shown above to open the **Layer Display Options** dialog, and place a check in the **Disp** column for the CAD, As Built Mask layer.




4. Click **OK** and **OK** again to apply these changes and close the dialogs.



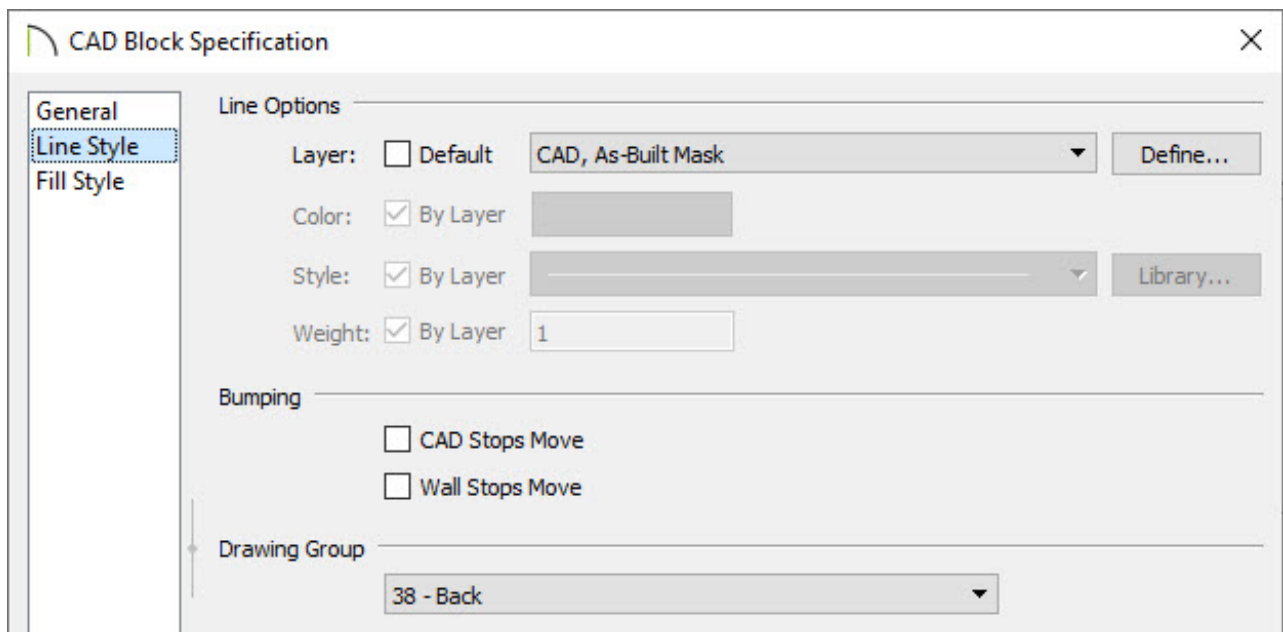
To convert our mask into a CAD block

1. With the **Select Objects**  tool, click and drag a selection marquee around the whole detail.

2. On the edit toolbar, click **Make CAD Block** .

3. Select **Open Object**  to display the **CAD Block Specification** dialog.


Note: If the CAD block disappears, this could be because you de-selected it. Turn on the CAD, Default layer in the Layer Display Options to find it again.





- On the **GENERAL** panel, assign a **Block Name** of **As-Built Mask**.
- On the **LINE STYLE** panel, change the **Layer** to the **CAD, As-Built Mask** layer.
- Under the **Drawing Group**, select **Back**.

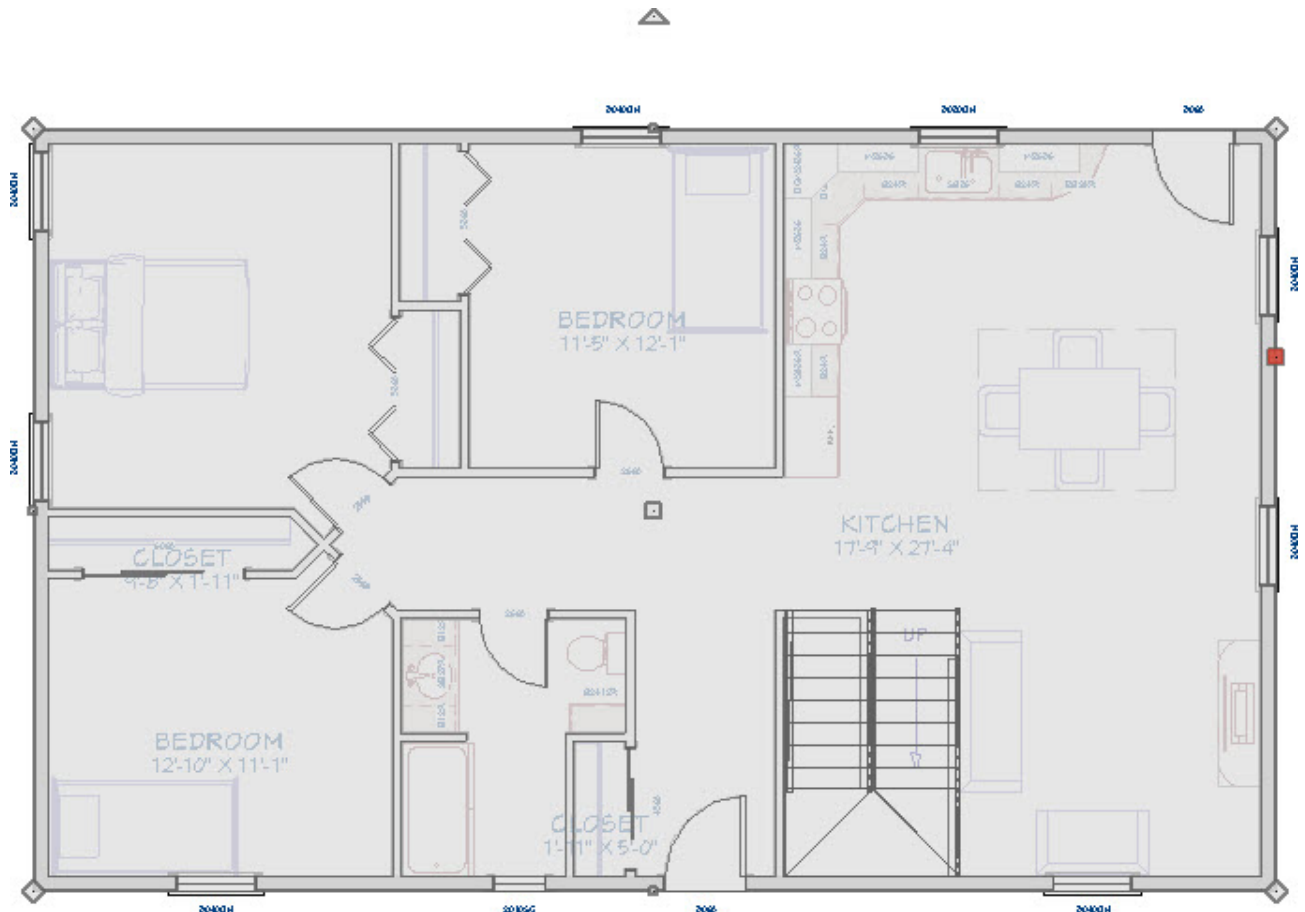
4. Click **OK** to accept your changes.

To place the CAD block

1. Using the **Select Objects**  tool, select the CAD block and then select **Edit> Copy**

 from the menu.

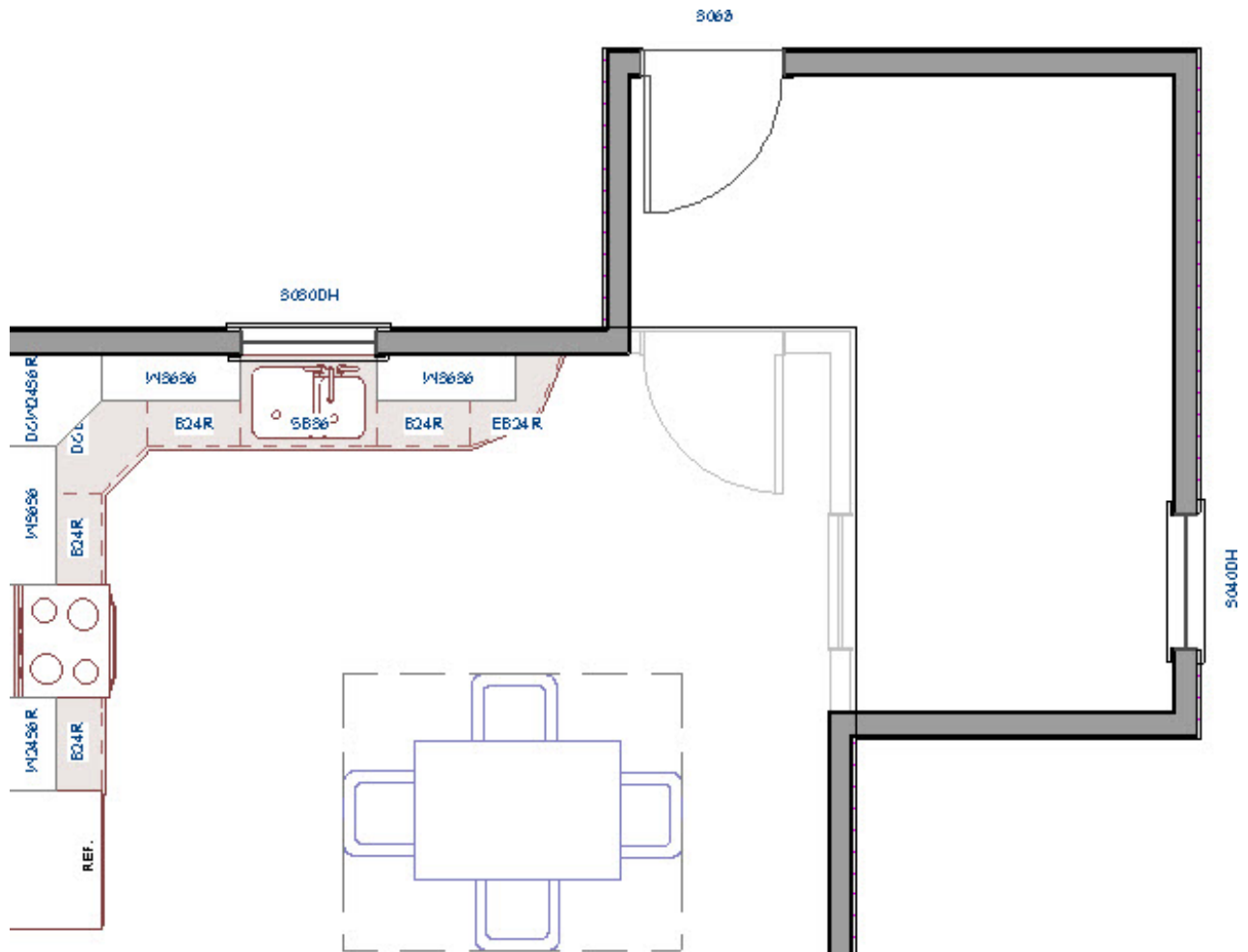
2. Switch back to the floor plan view.
3. Select **Edit> Paste> Paste Hold Position**  from the menu to paste the CAD block under your existing plan.



4. Use the **Active Layer Set** drop-down menu again to switch back to the **Working Layer Set**, or whichever layer set you prefer to work in.

Note: If the CAD block fails to appear when you switch between layer sets, ensure that the CAD, As-Built Mask layer is set to be displayed in the layer set(s) you want to see it in.

5. When walls are moved, the CAD block representing the As-Built Mask will display in the background.




You can lock the CAD, As-Built Mask layer which will make the mask unselectable. This makes it easier to work with the plan as the mask can no longer get in the way.

Related Articles

- [Customizing a CAD Block or Detail \(/support/article/KB-00500/customizing-a-cad-block-or-detail.html\)](/support/article/KB-00500/customizing-a-cad-block-or-detail.html)
- [Tracing Over an Imported File to Create a 3D Floorplan \(/support/article/KB-00018/tracing-over-an-imported-file-to-create-a-3d-floorplan.html\)](/support/article/KB-00018/tracing-over-an-imported-file-to-create-a-3d-floorplan.html)
- [Understanding Layer Sets \(/support/article/KB-00765/understanding-layer-sets.html\)](/support/article/KB-00765/understanding-layer-sets.html)
- [Using the Reference Display \(/support/article/KB-00475/using-the-reference-display.html\)](/support/article/KB-00475/using-the-reference-display.html)



[\(https://chieftalk.chiefarchitect.com/\)](https://chieftalk.chiefarchitect.com/)

 [\(/blog/\)](/blog/)



[\(https://www.facebook.com/ChiefArchitect\)](https://www.facebook.com/ChiefArchitect)



[\(https://www.youtube.com/user/ChiefArchitectInc\)](https://www.youtube.com/user/ChiefArchitectInc)



[\(https://www.instagram.com/chiefarchitect/\)](https://www.instagram.com/chiefarchitect/)



[\(https://www.houzz.com/pro/chiefarchitect/\)](https://www.houzz.com/pro/chiefarchitect/)



[\(https://www.pinterest.com/chiefarchitect/\)](https://www.pinterest.com/chiefarchitect/)

[208-292-3400 \(tel:+1-208-292-3400\)](tel:+1-208-292-3400)

© 2000–2023 Chief Architect, Inc.

[Terms of Use \(/company/terms.html\)](/company/terms.html)

[Privacy Policy \(/company/privacy.html\)](/company/privacy.html)