

Message: The layer is locked.

Reference Number: **KB-02923**

Last Modified: **September 20, 2024**

This article also applies to the following legacy products:
Pro

QUESTION

I'm not able to place, select, rebuild, or delete objects. Instead, I receive one of the following messages:

- "#272032251 - The layer is locked. Items cannot be created or modified on locked layers. Do you want to unlock the layer?"
- "#272031031 - Roof planes layer is locked, cannot set auto-rebuild roof unless the lock is unchecked."
- "#272032284 - The Roof Planes layer is locked. No roof planes were deleted."

How do I resolve this issue?

ANSWER

Every item in Chief Architect is assigned a layer. For example, base cabinets are assigned to the "Cabinets, Base" layer when placed. When a layer has been locked, it prevents objects on that layer from being selected. New objects cannot be drawn on a locked layer, either. If you lock a layer and then attempt to draw a new object on that layer, a message box will ask you to unlock the layer.

Layers with objects that you need to see as a reference while working, but not select,

are good candidates for locking.

For example:

- Locking the “Rooms” layer can make it easier to select objects located inside of rooms.
- Locking the “Roof Planes” layer can make it easier to select objects located under the eaves.

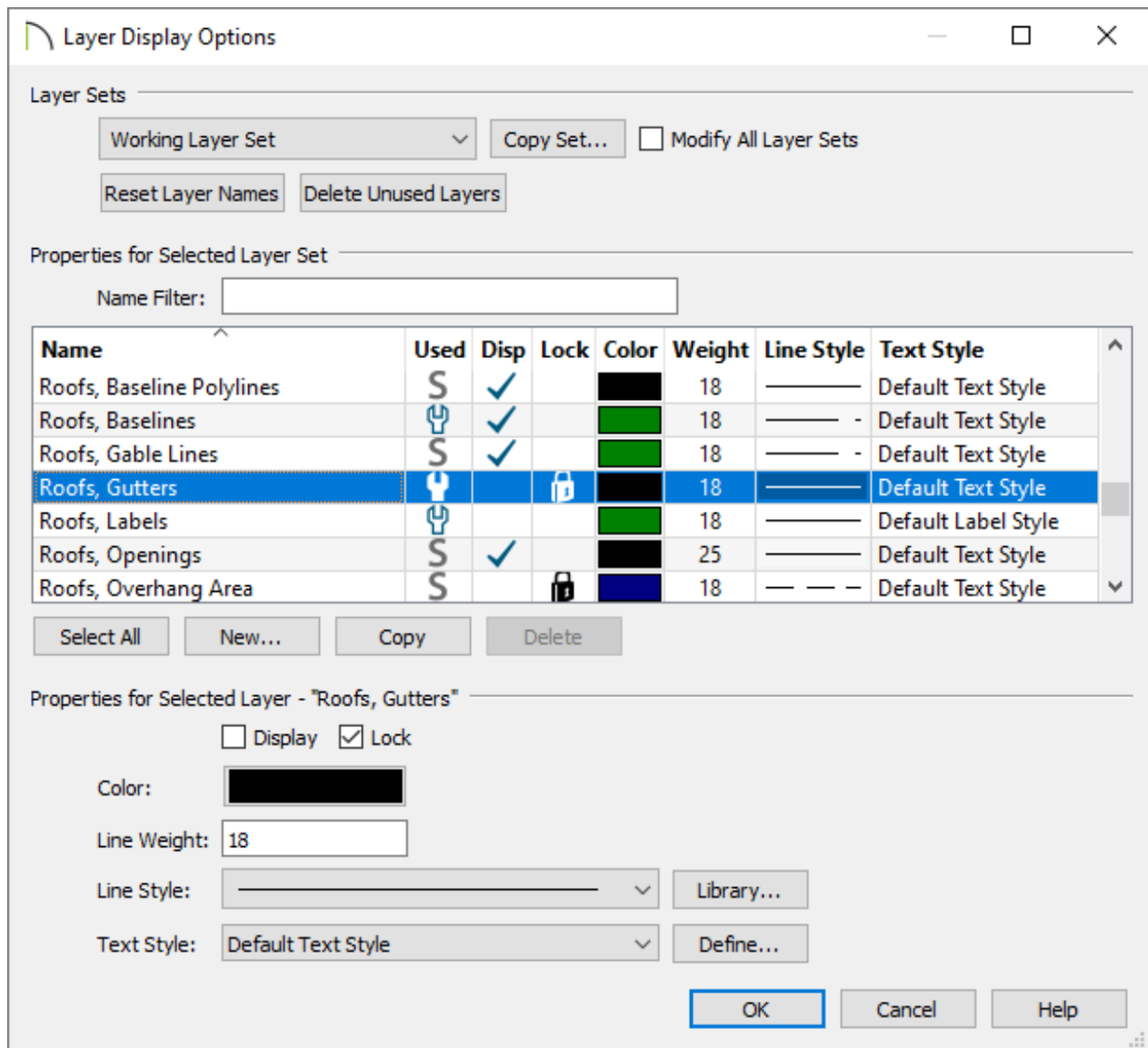
To lock or unlock layers

1. Select **Tools> Layer Settings> Display Options** .

In Home Designer Pro select **Tools> Display Options** .

2. In the **Layer Display Options** dialog that displays, notice the **Lock** column that is present. If a padlock symbol appears in this column for a selected layer, the layer is locked. Click on the padlock symbol to unlock the layer.

Note: You can also lock and unlock layers using the 'Lock' checkbox that displays under the Properties for Selected Layer section when a layer is selected or highlighted.



Some layers that are locked by default include:

- "Roofs, Gutters"
- "Roofs, Overhang Area"
- "Roofs, Ridge Caps"
- "Roofs, Trim"


3. Click **OK**, then attempt to place, select, rebuild, or delete the original object.

Related Articles

[Understanding Layer Sets \(/support/article/KB-00765/understanding-layer-sets.html\)](/support/article/KB-00765/understanding-layer-sets.html)



[\(https://chieftalk.chiefarchitect.com/\)](https://chieftalk.chiefarchitect.com/)

 [\(/blog/\)](#)



[\(https://www.facebook.com/ChiefArchitect\)](https://www.facebook.com/ChiefArchitect)



[\(https://www.youtube.com/user/ChiefArchitectInc\)](https://www.youtube.com/user/ChiefArchitectInc)



[\(https://www.instagram.com/chiefarchitect/\)](https://www.instagram.com/chiefarchitect/)



[\(https://www.houzz.com/pro/chiefarchitect/\)](https://www.houzz.com/pro/chiefarchitect/)



[\(https://www.pinterest.com/chiefarchitect/\)](https://www.pinterest.com/chiefarchitect/)

[208-292-3400 \(tel:+1-208-292-3400\)](tel:+1-208-292-3400)

© 2000–2025 Chief Architect, Inc.

[Terms of Use \(/company/terms.html\)](#)

[Privacy Policy \(/company/privacy.html\)](#)