

Displaying Closed Cabinet Doors/Drawers and Panels in a Floor Plan View

Reference Number: **KB-03158**

Last Modified: **October 9, 2023**

The information in this article applies to:



QUESTION



I would like to display my closed cabinet doors/drawers and automatic cabinet panels* in a floor plan view. I have the "Cabinets, Doors & Drawers" layer set to display, but these components aren't appearing. What am I missing?

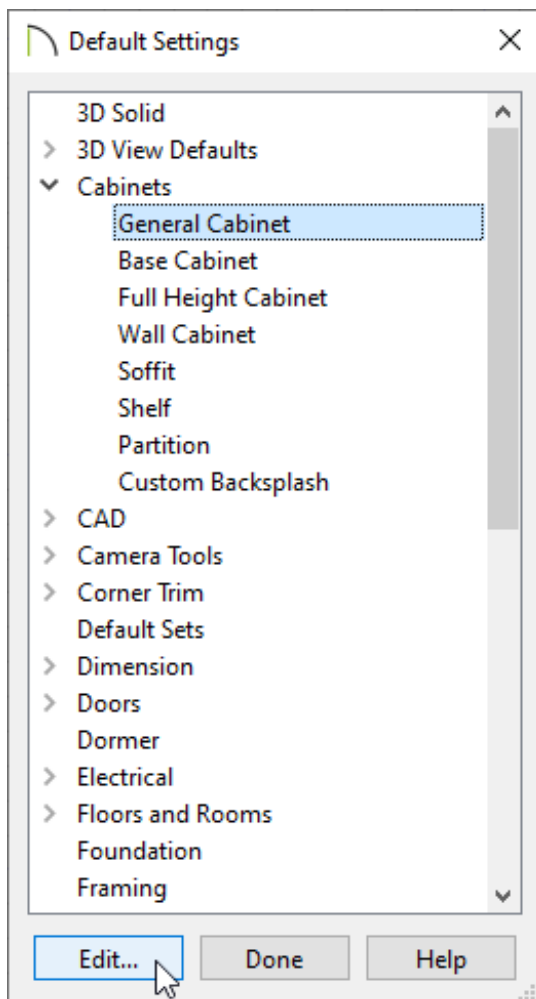
ANSWER

By default, closed cabinet doors/drawers, as well as automatic cabinet panels*, do not display in plan view, even when the "Cabinets, Doors & Drawers" layer is set to display. However, these components can easily be displayed by checking the Show Closed Doors/Drawers and Panels setting located in the General Cabinet Defaults. Alternatively, if you would like more granular control on which cabinets display closed doors/drawers, you can enable the Show Open settings with a Percent Open/Swing Angle value of 0.

**The ability to display automatic cabinet panels in plan view is only available in Chief Architect X15, Home Designer 2024, and newer versions.*

To display closed doors/drawers and panels* in a floor plan for all cabinets

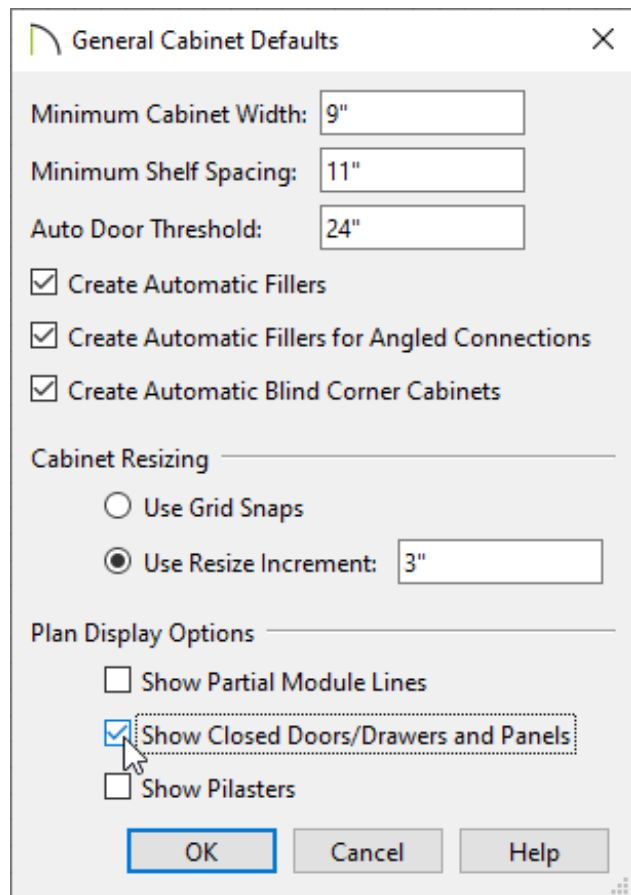
1. **Open**  the plan that you would like to display these components within.
2. Navigate to **Edit> Default Settings**  from the menu, expand the **Cabinets** category, select the **General Cabinet** subcategory, then click **Edit**.



3. In the **General Cabinet Defaults** dialog that displays, check the **Show Closed Doors/Drawers and Panels** box.

**In Chief Architect X14, Home Designer 2023, and prior versions, this was called Show Closed Doors/Drawers in Plan Views as the ability to show automatic cabinet*



panels in plan view did not exist.



4. Click **OK** and **Done** to confirm the change.

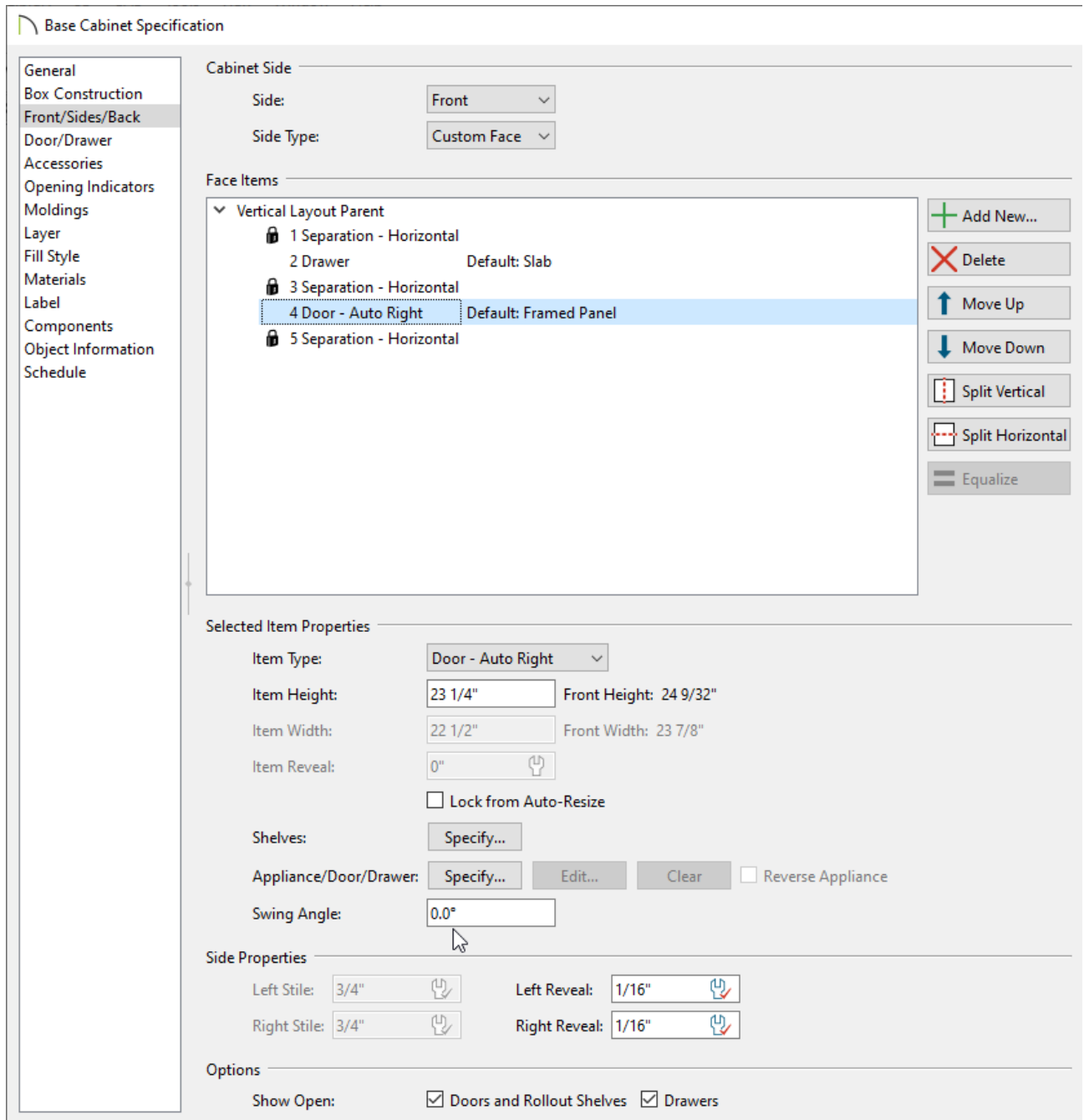
Note: If cabinet doors/drawers and panels do not display after enabling this setting, it's possible that the "Cabinets, Doors & Drawers" layer is not set to display. Access the Layer Display Options or Active Layer Display Options, then enable the display of the mentioned layer.

To display closed doors/drawers in a floor plan for a single cabinet

1. Using the **Select Objects**  tool, click on the desired cabinet to select it, then click the **Open Object**  edit tool.

2. On the **FRONT/SIDES/BACK** panel of the **Cabinet Specification** dialog that displays:

In Home Designer Pro, select the **FRONT** panel instead.




- Check the **Doors and Rollout Shelves** box and/or the **Drawers** box next to the Show Open section at the bottom.
- Using either the Face Items table or the 3D preview on the right, select the desired door or drawer that you want to display as closed, then change the **Percent Open/Swing Angle** setting to **0**.

Perform this same process for each separate door and drawer face item that you would like to display as closed.

3. Click **OK** to confirm the change.

Related Articles

 [Replacing a Cabinet's Standard Shelves with Rollout Shelves or Drawers \(/support/article/KB-03142/replacing-a-cabinet-s-standard-shelves-with-rollout-shelves-or-drawers.html\)](/support/article/KB-03142/replacing-a-cabinet-s-standard-shelves-with-rollout-shelves-or-drawers.html)

 [Using Different Door Styles on a Single Cabinet\(/support/article/KB-00040/using-different-door-styles-on-a-single-cabinet.html\)](/support/article/KB-00040/using-different-door-styles-on-a-single-cabinet.html)



[\(https://chieftalk.chiefarchitect.com/\)](https://chieftalk.chiefarchitect.com/)

 [\(/blog/\)](/blog/)



[\(/https://www.facebook.com/ChiefArchitect\)](https://www.facebook.com/ChiefArchitect)



[\(/https://www.youtube.com/user/ChiefArchitectInc\)](https://www.youtube.com/user/ChiefArchitectInc)



[\(/https://www.instagram.com/chiefarchitect/\)](https://www.instagram.com/chiefarchitect/)



[\(/https://www.houzz.com/pro/chiefarchitect/\)](https://www.houzz.com/pro/chiefarchitect/)



[\(/https://www.pinterest.com/chiefarchitect/\)](https://www.pinterest.com/chiefarchitect/)