

# Transferring a Camera's Properties to Other Camera Views

---

Reference Number: **KB-03196**

Last Modified: **July 7, 2025**

---

This article also applies to the following legacy products:  
Pro | Architectural | Suite



## QUESTION

How can I easily transfer properties that I have specified in one of my camera views over to another camera view?

## ANSWER


If several modifications have been made to a particular camera view, and you now want to copy, or replicate, them across other camera views, consider copying/pasting the view or setting the particular view as the default for the camera tool.

### To copy and paste cameras

1. With a camera or cross section callout selected in a plan view, navigate to **Edit> Copy** , select the **Copy/Paste**  edit tool, or press the hotkey command **Ctrl/Command + C** to copy the view.


**Note:** Camera views can also be duplicated using the Project Browser, though this will simply create a copy on top of the original.\*

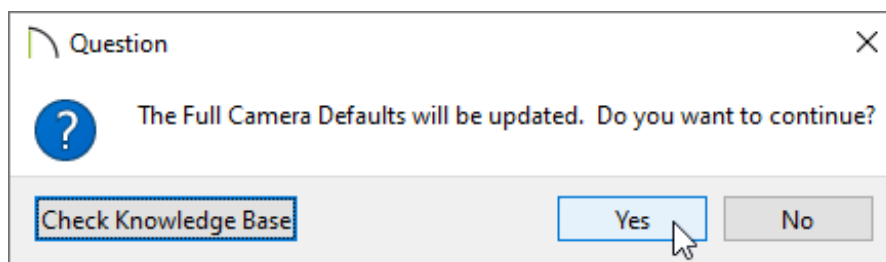
*\*Applies to Chief Architect Premier and Chief Architect Interiors only.*

- 
2. Navigate to **Edit> Paste> Paste**  or press the hotkey command **Ctrl/Command + V**, then click where you want the copied camera to be placed.

## To set a camera as the default for a camera tool\*

*\*Applies to Chief Architect Premier and Chief Architect Interiors only.*

1. In a plan view, select the camera or cross section callout that you would like to set as the default.
2. Click on the **Set As Default**  edit tool. A **Question** dialog will display stating: "The [CAMERA TOOL] Defaults will be updated. Do you want to continue?" Click **Yes** to proceed.




## MORE INFORMATION

- Cameras can be copied between plan files. After copying a camera, navigate to the desired plan, then use one of the various Paste tools or hotkey commands.
  - Additional edit tools can be used in unison with the camera copying process. To learn more, please see the "Copying and Pasting Objects" section located within your program's documentation.
  - It's important to note that cross section/elevation views cannot be rotated after they have been created/placed.
-

- 📄 [Copying an Object from One Floor to the Same Position on Another Floor \(/support/article/KB-00172/copying-an-object-from-one-floor-to-the-same-position-on-another-floor.html\)](/support/article/KB-00172/copying-an-object-from-one-floor-to-the-same-position-on-another-floor.html)
- 📄 [Group Selecting Objects \(/support/article/KB-00623/group-selecting-objects.html\)](/support/article/KB-00623/group-selecting-objects.html)



[\(https://chieftalk.chiefarchitect.com/\)](https://chieftalk.chiefarchitect.com/)

 (/blog/)



[\(https://www.facebook.com/ChiefArchitect\)](https://www.facebook.com/ChiefArchitect)



[\(https://www.youtube.com/user/ChiefArchitectInc\)](https://www.youtube.com/user/ChiefArchitectInc)



[\(https://www.instagram.com/chiefarchitect/\)](https://www.instagram.com/chiefarchitect/)



[\(https://www.houzz.com/pro/chiefarchitect/\)](https://www.houzz.com/pro/chiefarchitect/)



[\(https://www.pinterest.com/chiefarchitect/\)](https://www.pinterest.com/chiefarchitect/)